

AREA
(i) 0.1486 ha.
(ii) 1.9015 ha.
(iii) 0.4839 ha.
(i)+(ii)+(iii)= 2.5340 ha.

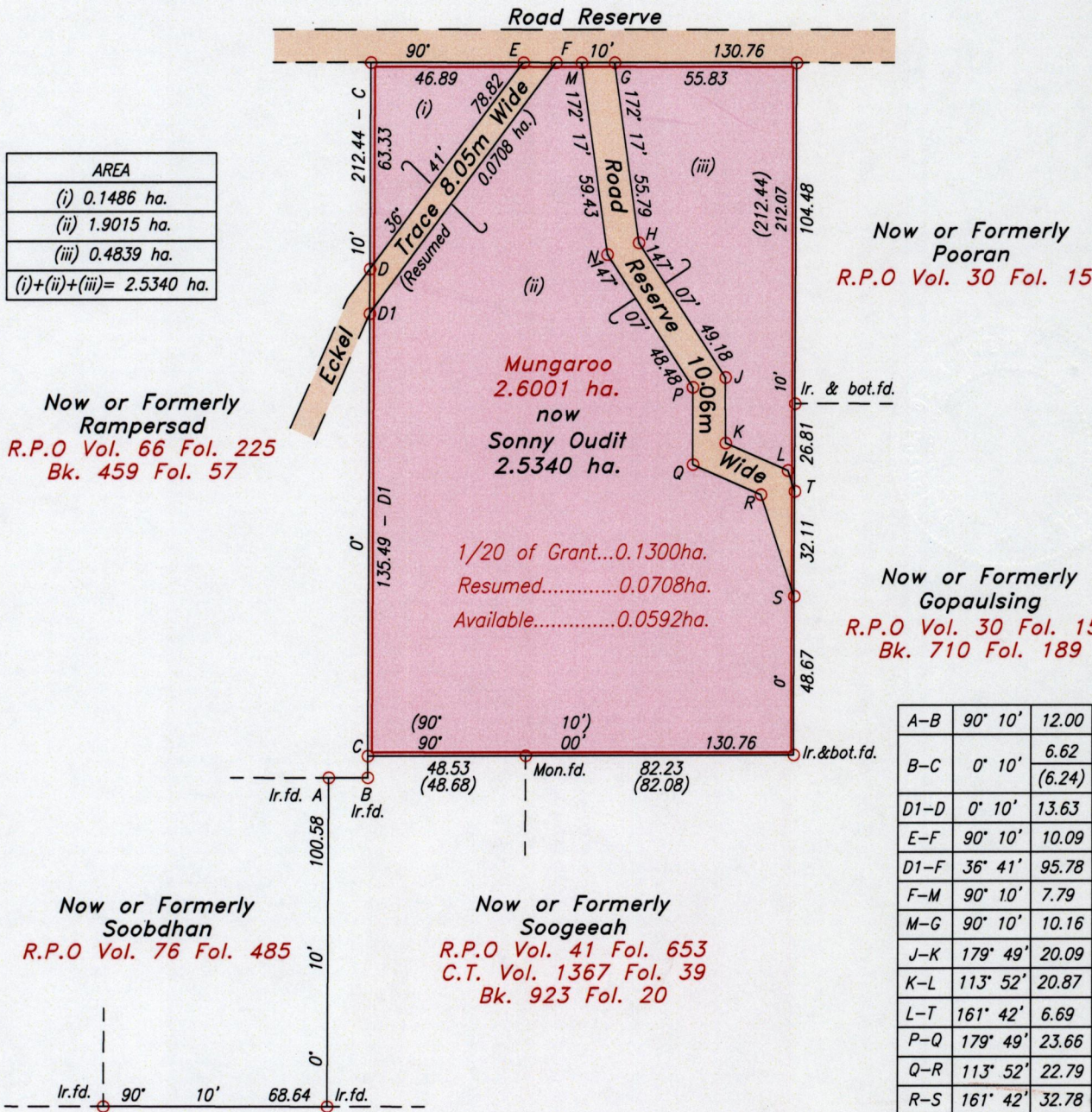
Now or Formerly Rampersad
R.P.O Vol. 66 Fol. 225
Bk. 459 Fol. 57

Now or Formerly Soobdhan
R.P.O Vol. 76 Fol. 485

Now or Formerly Soogeeah
R.P.O Vol. 41 Fol. 653
C.T. Vol. 1367 Fol. 39
Bk. 923 Fol. 20

Now or Formerly Pooran
R.P.O Vol. 30 Fol. 157

Now or Formerly Gopaulsing
R.P.O Vol. 30 Fol. 157
Bk. 710 Fol. 189



Approved: *[Signature]*
Director of Surveys
2007.5.6

Ref: Bk. 459 Fol. 61
PLAN A.D.45
S.O. No. 583/1900
S.O. No. 215/1932

SCALE 1:2000

○ Denotes Iron put except otherwise stated.

Note: Bearings are Cassini grid based on solar observations.

Distances are in metres.

To obtain compass bearing subtract 10 minutes.

Plan of a Parcel of land coloured pink in the Ward of La Brea

Containing two point five three four zero hectares

Surveyed by me with due authority, in July 2006.

In accordance with Regulation 25(1) of the Land Surveyors' Regulations, 1998,

I certify that this plan is correct.

Checked by: *[Signature]* 20/4/09

Entered

Trinidad & Tobago Land Surveyor *[Signature]* 23/4/2009

