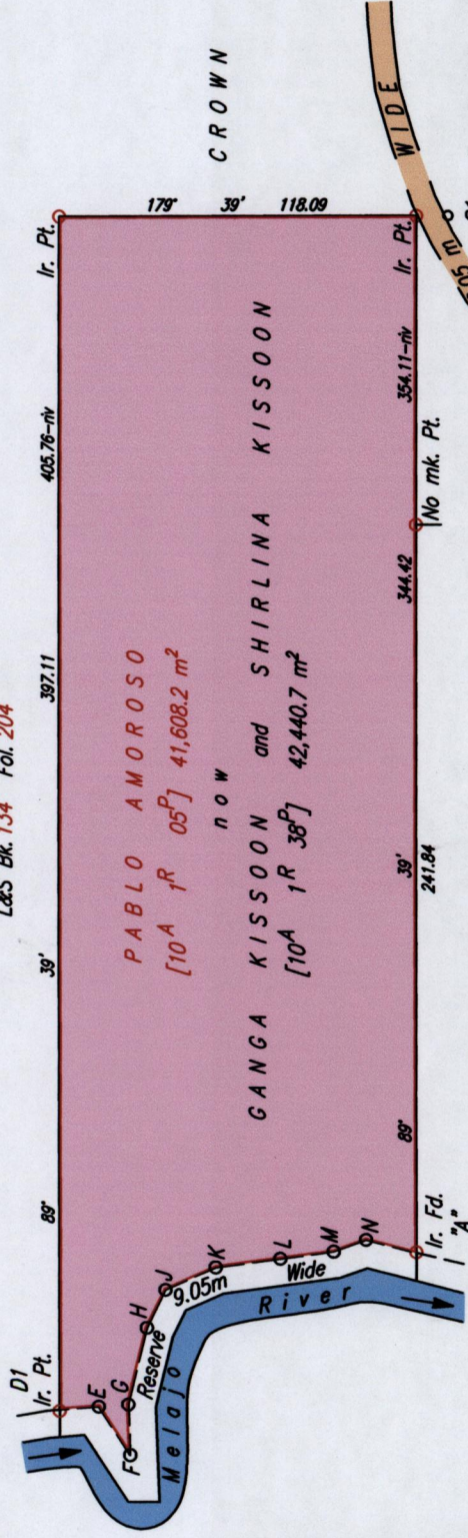
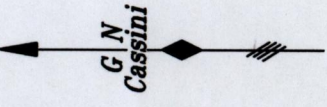


Now or Formerly Philip Lebart
 L&S Bk. 134 Fol. 204



D1 - E	173° 39'	12.93
E - F	237° 00'	19.26
F - G	87° 40'	16.9
G - H	103° 06'	26.46
H - J	115° 36'	14.15
J - K	155° 28'	18.18
K - L	172° 11'	21.57
L - M	172° 14'	17.82
M - N	159° 46'	11.4
N - A	193° 46'	17.24



Coordinates of S1 (Ir.spk.pt.): 712663mE, 1175313mN
 U.T.M 20, WGS 84 (+/-5.0m)
 G.P.S (Direct Observation)

15000

Approved
 Director of Surveys 2007.4.30
 Bearings are Cassini Grid based on Solar Observations

PLAN of a parcel of land coloured pink in the Ward of Matura
 Containing together forty two thousand four hundred and
 forty point seven square metres
 Surveyed by me, with due authority, in May-August 2008
 at the request of Ganga Kisson
 In accordance with Regulation 25 (1) of The Land Surveyors'
 Regulations 1998, I certify that this plan is correct.
 Checked by.....
 Entered on.....

Ir. Fd. "B" - Ir. Fd. "D"	89° 02'	5.99
Ir. Fd. "A" - Ir. Fd. "B"	153° 15'	203.95
B3 - A3	89° 39'	61.78
A3 - Z2	80° 39'	10.18
Z2 - Y2	61° 46'	10.58
Y2 - C1	49° 39'	135.63
C1 - S2	50° 48'	67.70
S2 - S1	59° 59'	59.00
S1 - Ir. pt.	359° 39'	10.53



Vide L/S Bk. 133 Fol. 257
 SCALE 1 : 2500
 Distances are in METRES

5

See PLAN E.H. 79
 S/O No. 119/1952
 L&S Bk. 1151 Fol. 108

..... Ric Javed Ali TTLS

39

Trinidad & Tobago Land Surveyor 23rd March 2008

1500/39

