

U.P.R.N. No.

R.P.O. Vol. 36 Fol. 81

C.T. Vol. 2991 Fol. 455

150033  
15000

Cadastral Sheet (E.B.F.) 36 A  
4/c

Ward of Turure

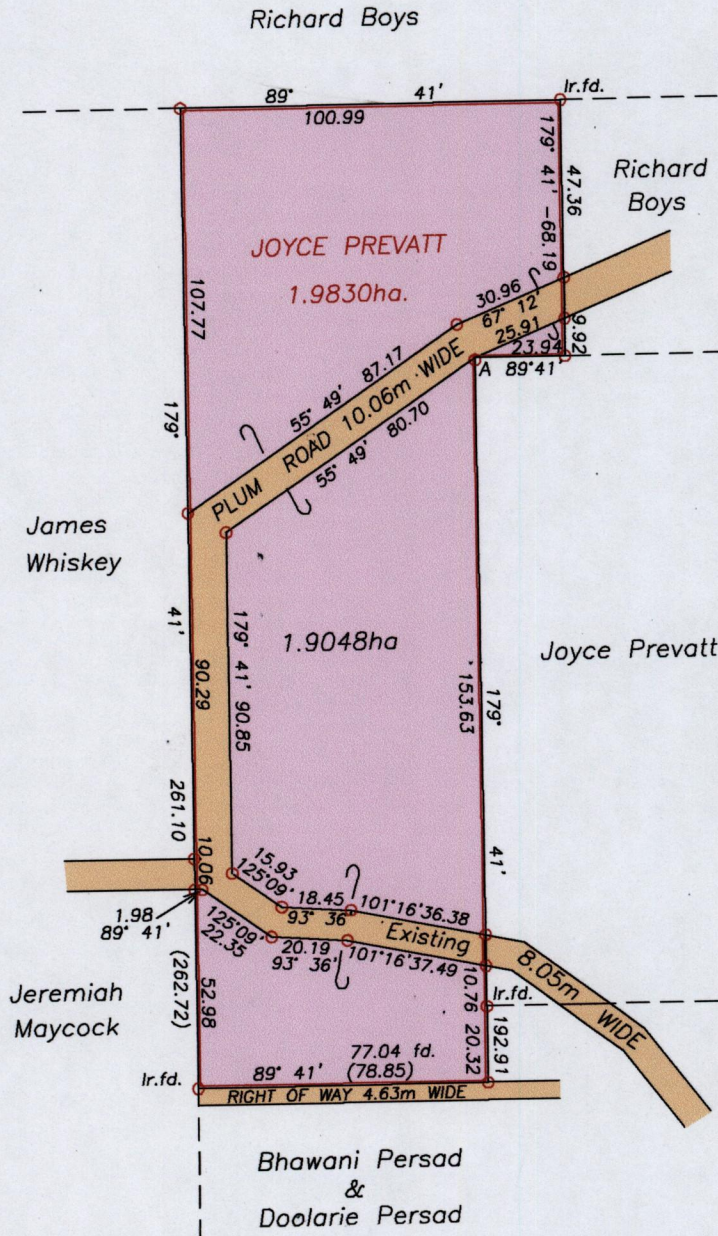
County of St. Andrew

33

Vide Bk.980 Fol.30

G. N.

Cassini



Sta. A - 712066.71mE  
1162361.28mN  
Scaled from Ward Sheet

Approved.....  
Director of Surveys  
2509.444

○ Denotes Iron put except where stated.

Bearings are Cassini Grid based on Solar Observations

Note to obtain compass bearings add/subtract minutes

Plan of a Parcel of land coloured pink in the Ward of Turure

Containing one point nine zero four eight hectares

Surveyed by me, with due authority in October 2007

In accordance with regulation 25 (1) of the Land Surveyors' Regulations 1998,

I certify that this plan is correct.

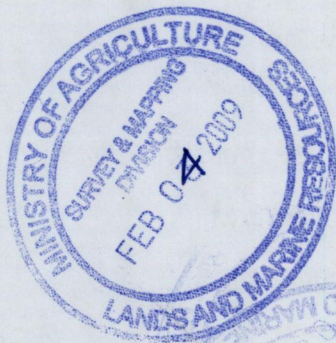
Checked by.....  
27/1/09

Entered on..... Trinidad and Tobago Land Surveyor..... 19th August 2008

SCALE 1/ 2000

Distances are in metres





1500/33