

1500/30

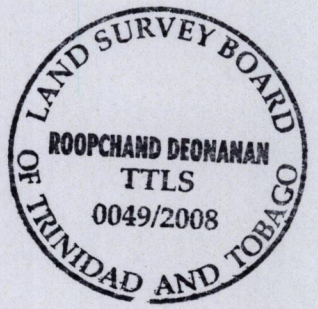
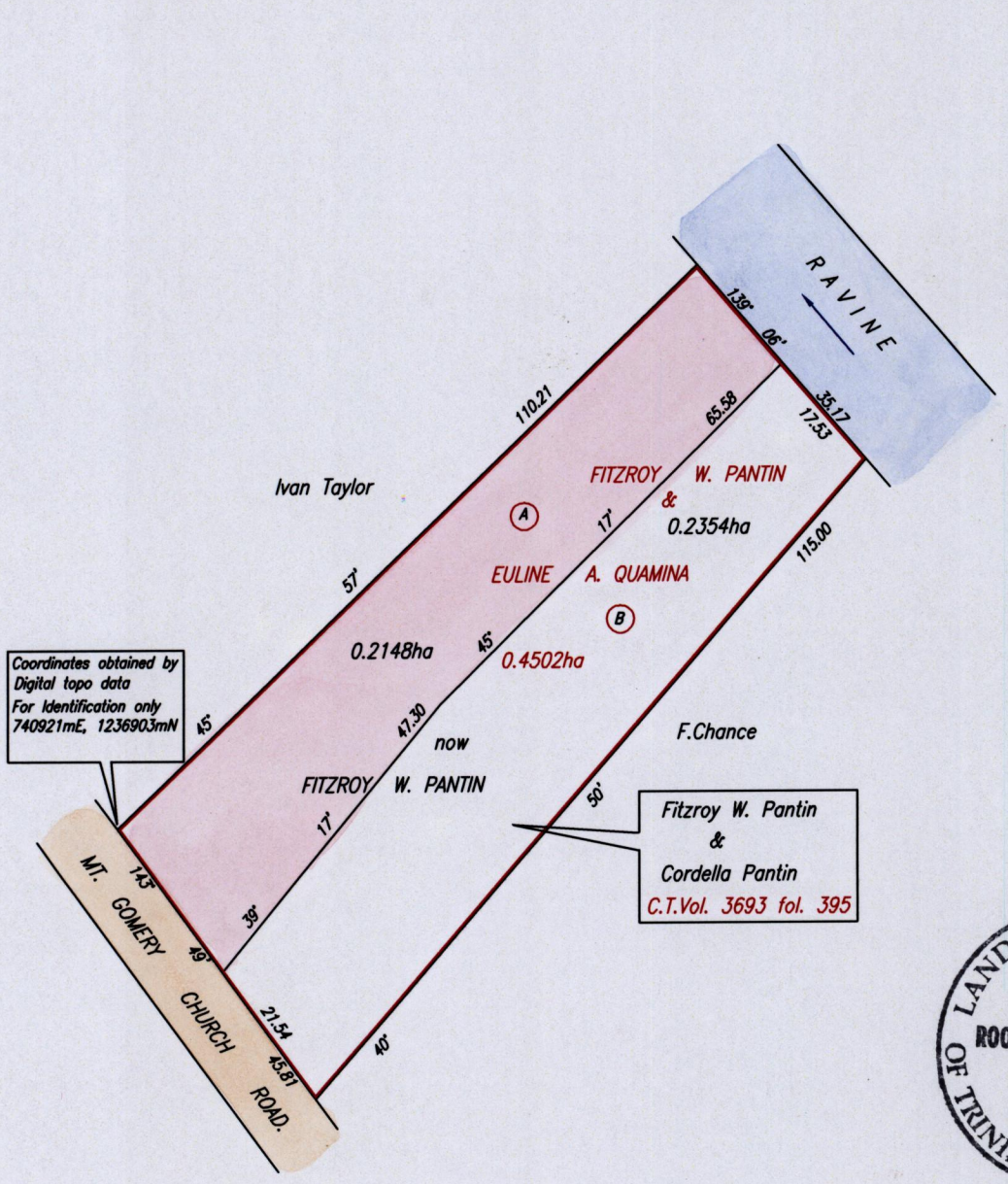
1500

30

R.P.O. Vol. Fol.  
C.T. Vol. 2917 Fol. 219  
Plan filed in Vol. 3692 fol. 61  
Bk. 1145 fol. 126

Remaining Portion

Cadastral Sheet I.16.L. 1F/5/a  
Ward of Tobago  
Parish of St. Patrick  
Bethel



Approved .....  
*[Signature]*  
Director of Surveys  
2009.4.9

SCALE 1:1000  
Distances are in metres

This is a true copy of a diagram of a Parcel of land in the Ward of Tobago  
Containing zero point four five zero two hectare originally granted to  
FITZROY W. PANTIN & EULINE A. QUAMINA, showing a portion coloured pink and containing  
zero point two one four eight hectare being the remainder after one previous transfer  
of a portion of the land  
In accordance with Regulation 25 (1) of the Land Surveyors' Regulations 1998,  
I certify that this plan is correct.

Checked by *[Signature]* 5/4/09 .....  
*[Signature]*

Entered on .....  
Trinidad & Tobago Land Surveyor. *[Signature]* 8<sup>th</sup> December ..... 2008.  
PATH = E:\700 E:\Drawings08\Pantin.dwg



