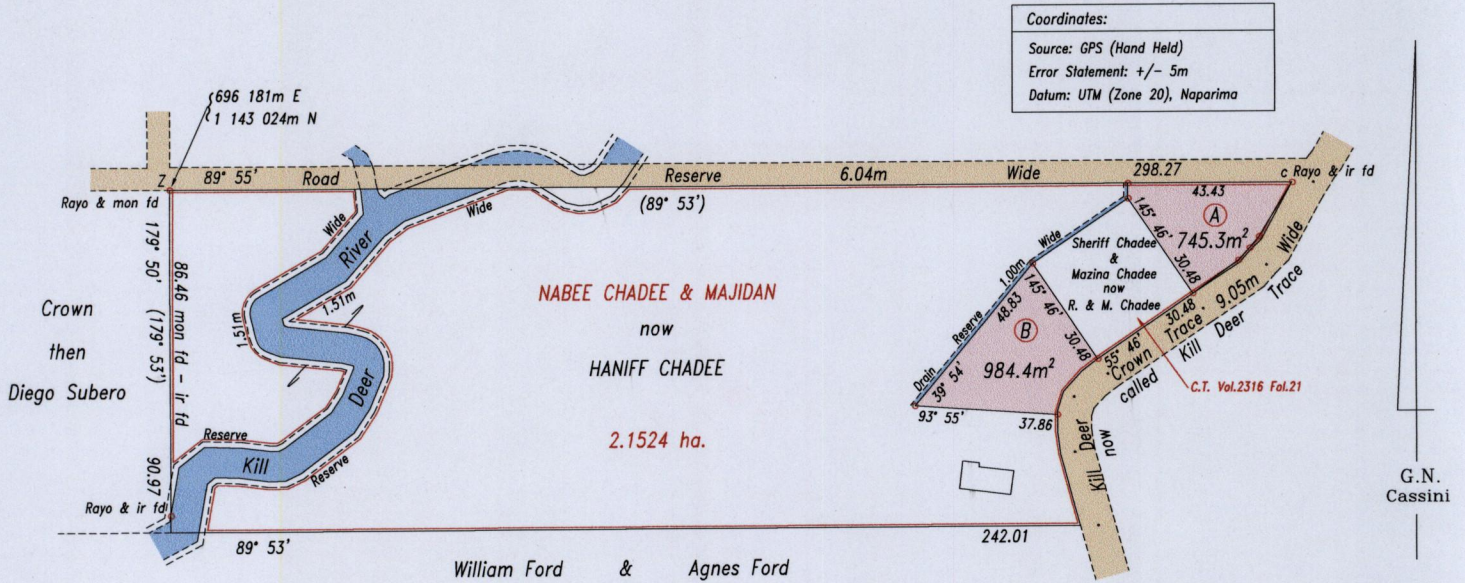


15000

25

Parcel Address: #107 Kill Deer Trace, Tabaquite.



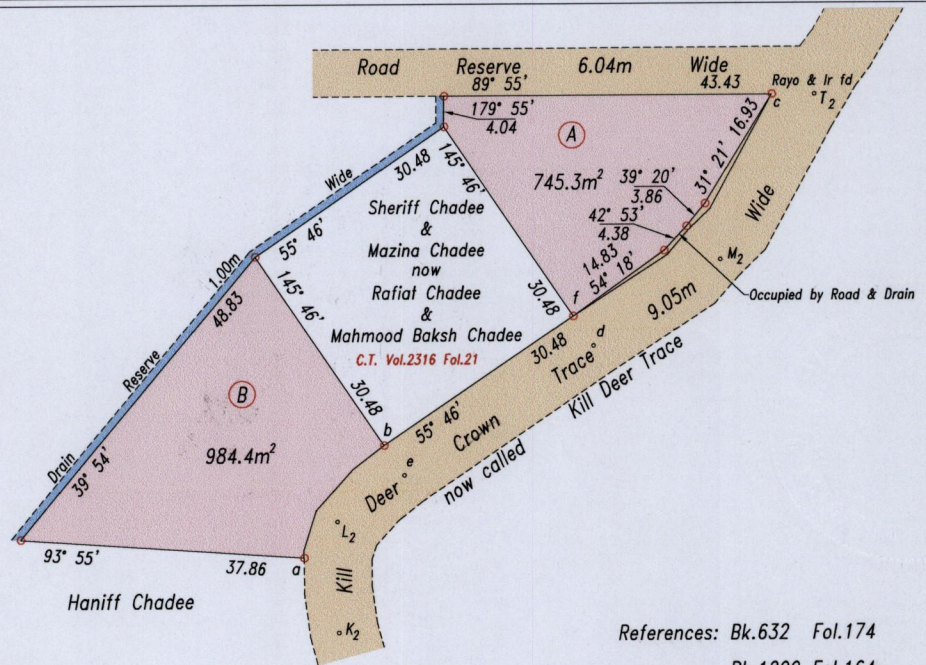
Coordinates:
Source: GPS (Hand Held)
Error Statement: +/- 5m
Datum: UTM (Zone 20), Naparima

SCALE 1: 2000

Distances are in metres

o Denotes iron put except otherwise stated

Sta.-Sta.	Bearing	Distance
c - T ₂	89° 55'	5.69
T ₂ - M ₂	209° 39'	25.17
M ₂ - d	235° 46'	20.33
d - e	235° 46'	30.48
e - L ₂	235° 46'	10.81
L ₂ - K ₂	179° 16'	14.77
a - b	35° 45'	18.29
e - b	325° 46'	4.83
d - f	325° 46'	4.83



References: Bk.632 Fol.174
Bk.1200 Fol.164

Approved

Lynn Roopchand
Director of Surveys
2009.4.9

SCALE 1: 1000

Distances are in metres

o Denotes iron put except otherwise stated

Bearings are Cassini Grid based on Solar Observations

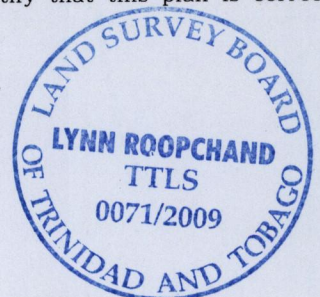
PLAN of 2 parcels of land coloured pink in the Ward of Charuma
Containing together one thousand seven hundred and twenty nine point seven square metres
Surveyed by me, with due authority, in March 2008

In accordance with Regulation 25(1) of the Land Surveyors' Regulations 1998, I certify that this plan is correct.

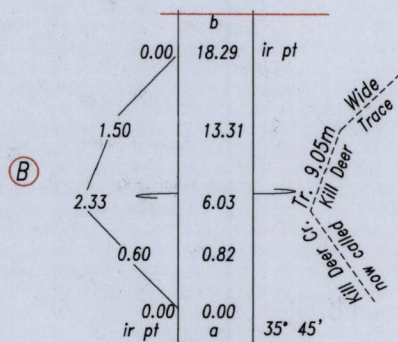
Checked by *mum 8/4/109*

Entered

L.A. Roopchand
Trinidad & Tobago Land Surveyor *30/1/2009*



Original BK. 1200 fol. 164



1500/25