

1500/224

R.P.O. Vol. 510 Fol. 17
C. of T. Vol. Fol.

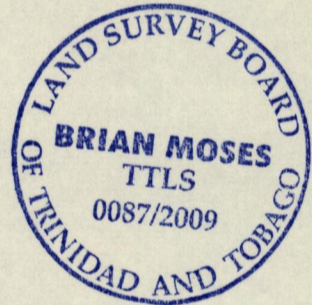
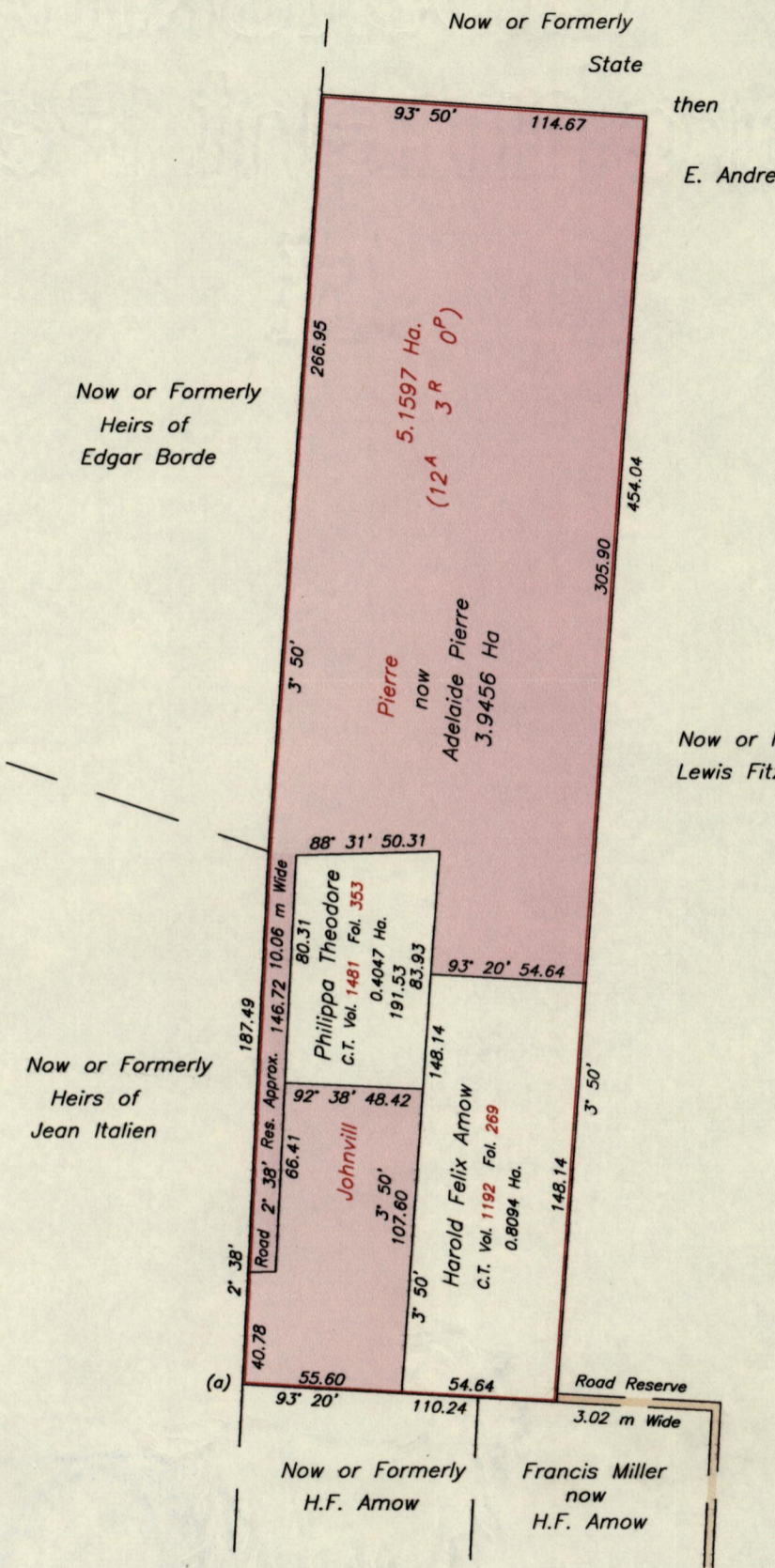
1500

Cadastral Sheet A.19.B. 12F
2/c

Ward of Diego Martin
County of St. George

224

Remaining Portion



(a) - N 1181100
E 655392
UTM Co-ordinates are approx.
Scaled from 1/10,000 sheet

- References
- Bk. 936 Fol. 135
 - Bk. 897 Fol. 4
 - Bk. 1157 Fol. 177

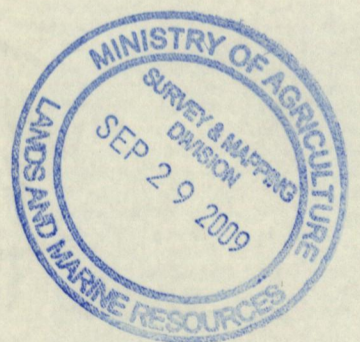
SCALE 1:2500
Distances are in METRES

Approved *[Signature]*
Director of Surveys
2009.10.02

Bearings are Cassini Grid *[unclear]*

This is a true copy of a diagram of 5.1597 Ha. originally granted to Johnvill Pierre, showing a portion of land Coloured pink containing three point nine four five six Hectares being the remainder after two previous transfers of other portions of the land. In accordance with Regulation 25 (1) of the Land Surveyors' Regulations 1998, I certify that this Plan is correct.

Checked by *[Signature]* 1/10/09 T.T.L.S.
Entered on Trinidad & Tobago Land Surveyor *[Signature]* 23rd Sept. 2009



1500/224