

1500/217

U.P.R.N. No.

15(0)(0)

Ward of St. Anns
County of St. George

217

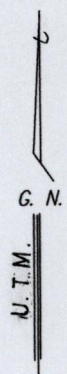
R.P.O Vol. Fol.

Cadastral Sheet B.17.J

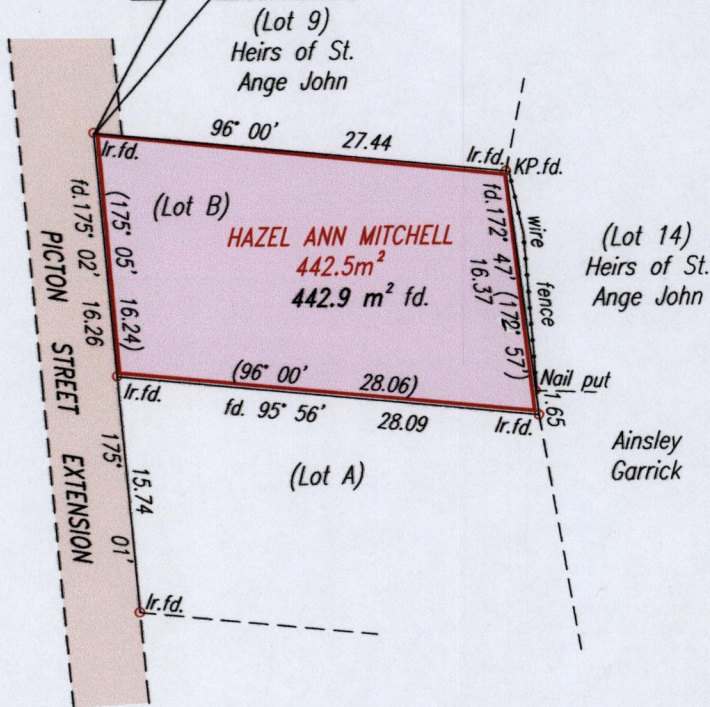
13F
3/c/4

C.T. Vol. 4017

Fol. 335



Coordinates from U.T.M
Ward Sheet (+/- 2m)
N=1178162
E=669811



Approved: *[Signature]*
Director of Surveys
2009.10.02

Vide:
Bk.1238 fol. 192

Bearings are U.T.M. Grid, based on solar observations. SCALE 1:500
Note: To obtain compass bearing subtract/add minutes. Distances are in metres
PLAN of a Parcel of land coloured pink in the ward of St. Anns

Containing four hundred and forty two point nine square metres
Surveyed by me, with due authority in January 2009
In accordance with regulation 25 (1) of the Land Surveyors' Regulations 1998,
I certify that this plan is correct.

Checked by: *[Signature]* 17/6/09
[Signature]

Entered on.....
Trinidad and Tobago, Land Surveyor 19th January 2009



1500/217