

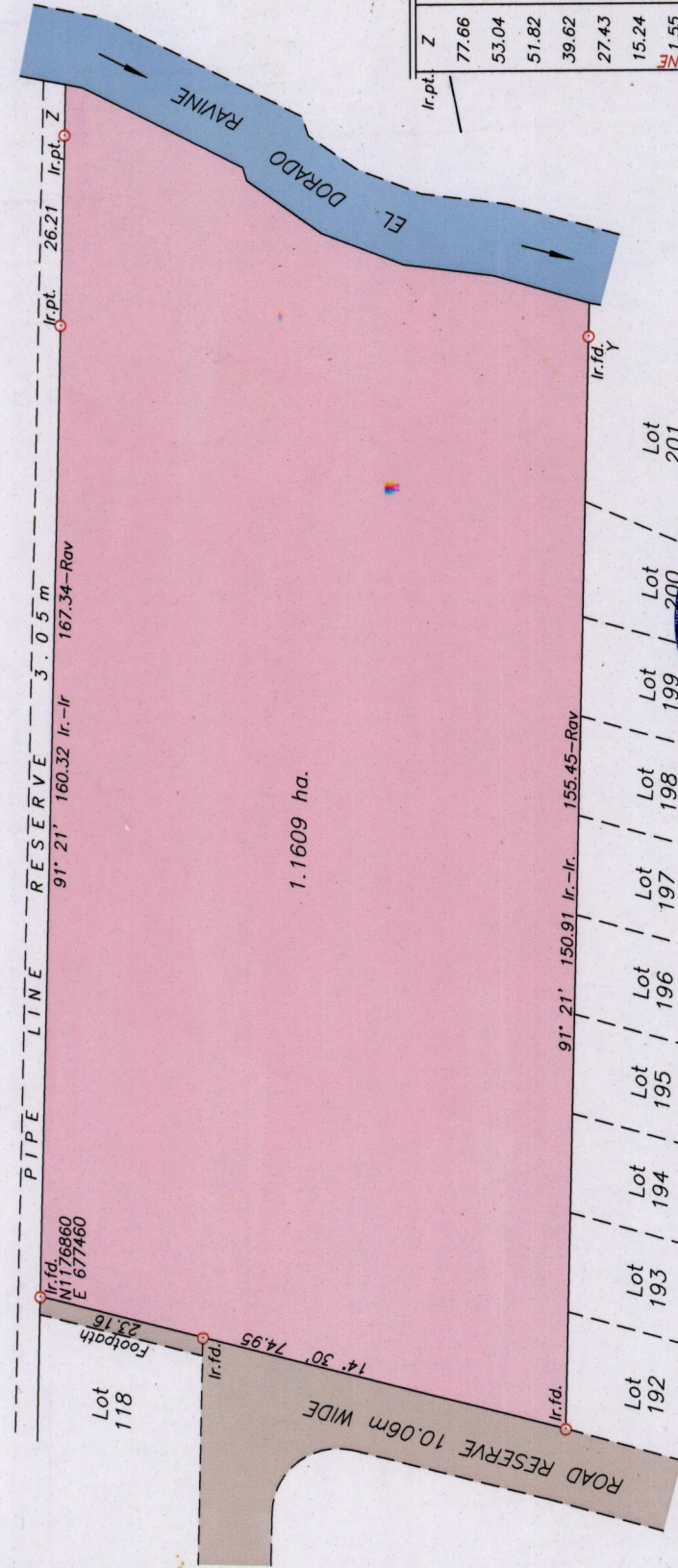
R.P.O. Vol. 100 Fol. 201

C.T. Vol. 2207 Fol. 49

Ward of Tacarigua

County of St. George

Cadastral Sheet B.18.O. 24A
2/a



Co-ordinates are UTM zone 20N Naparima Datum +/-5m scaled from L.&S. 1/10000 sheet.

Bearings are Cassini grid based on Magnetic Needle

Note: To obtain compass bearings add 5 minutes.

PLAN of a Parcel of land coloured pink in the Ward of Tacarigua

Containing one point one six zero nine hectares

Surveyed by me, with due authority, in October 1972

In accordance with Regulation 25 (1) of the Land Surveyors' Regulations 1998,

I certify that this plan is correct.

Checked by *M.M. 16/9/105*

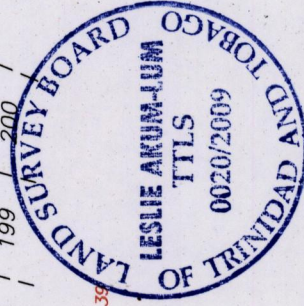
Entered..... *A. B. ...* Trinidad & Tobago Land Surveyor

Approved *[Signature]*
Director of Surveys
2009-9-18

SCALE 1/1000

Distances are in metres

See Plan R.P.O. Vol.2207 Fol.39



Ir.pt. Z	77.66	53.04	51.82	39.62	0	27.43	0	15.24	1.55	0	Y
Ir.pt. Y	7.01	4.57	3.05	0	0	3.05	4.27	0	0	0	X
DORADO RAVINE											
21' 17' (21' 14')											

1500
G N
Cassini

1500/209

2009

1502/209

