

1500/199

1500

R.P.O Vol. 550 Fol. 265

C.T. Vol. 553 Fol. 475

U.P.R.N. No.

B2 - N1127,423 , E -654,816
 UTM ZONE20 , WGS84(+/- 2.00M)
 Direct Observation-GPS hand held

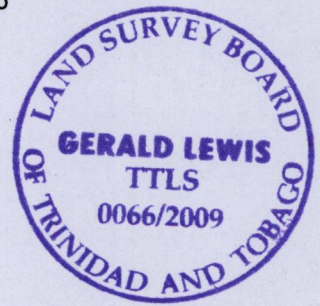
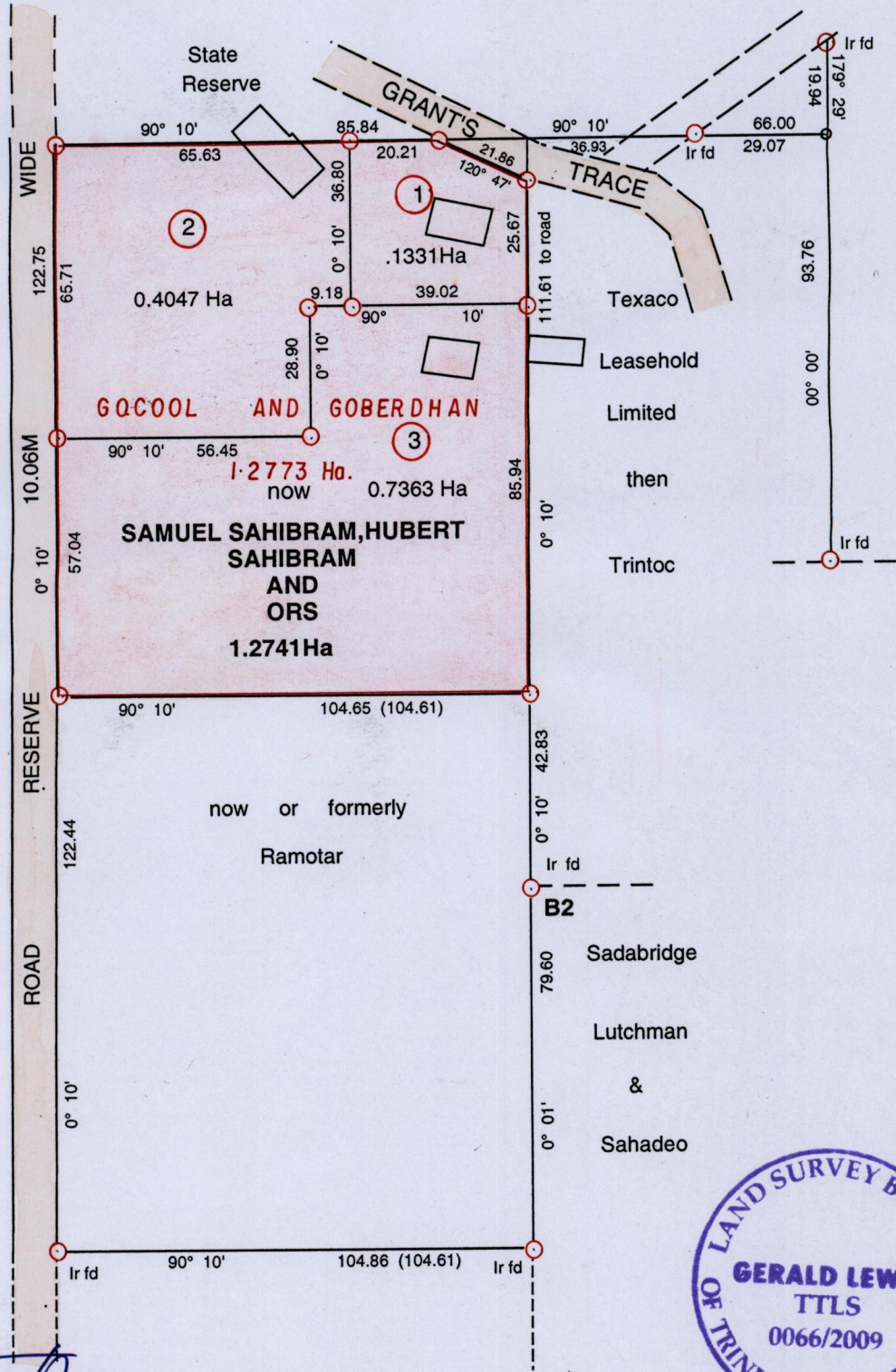
Cadastral Sheet G. 11. B., 62E 1/b G.N.

Ward of La Brea
County of St. Patrick

199

Bk: 721 Fol 227

Cassini



Approved *[Signature]*
 Director of Surveys
 2009.9.14

○ Denotes Iron Put unless otherwise stated
 Bearings are Cassini Grid based on Solar Obs

Distances are in Metres
 SCALE 1 : 1500

PLAN of 3 Parcels of land coloured pink in the **Ward of La Brea**
 Containing together **one point two seven four one hectares**
 Surveyed by me, with due authority, in April 2003

In accordance with Regulation 25(1) of the Land surveyor's Regulations, I certify that this plan is correct

Entered by *[Signature]*
 Checked by

[Signature]
 Trinidad and Tobago Land Surveyor 05/04/2009

107W

107W



1500/199