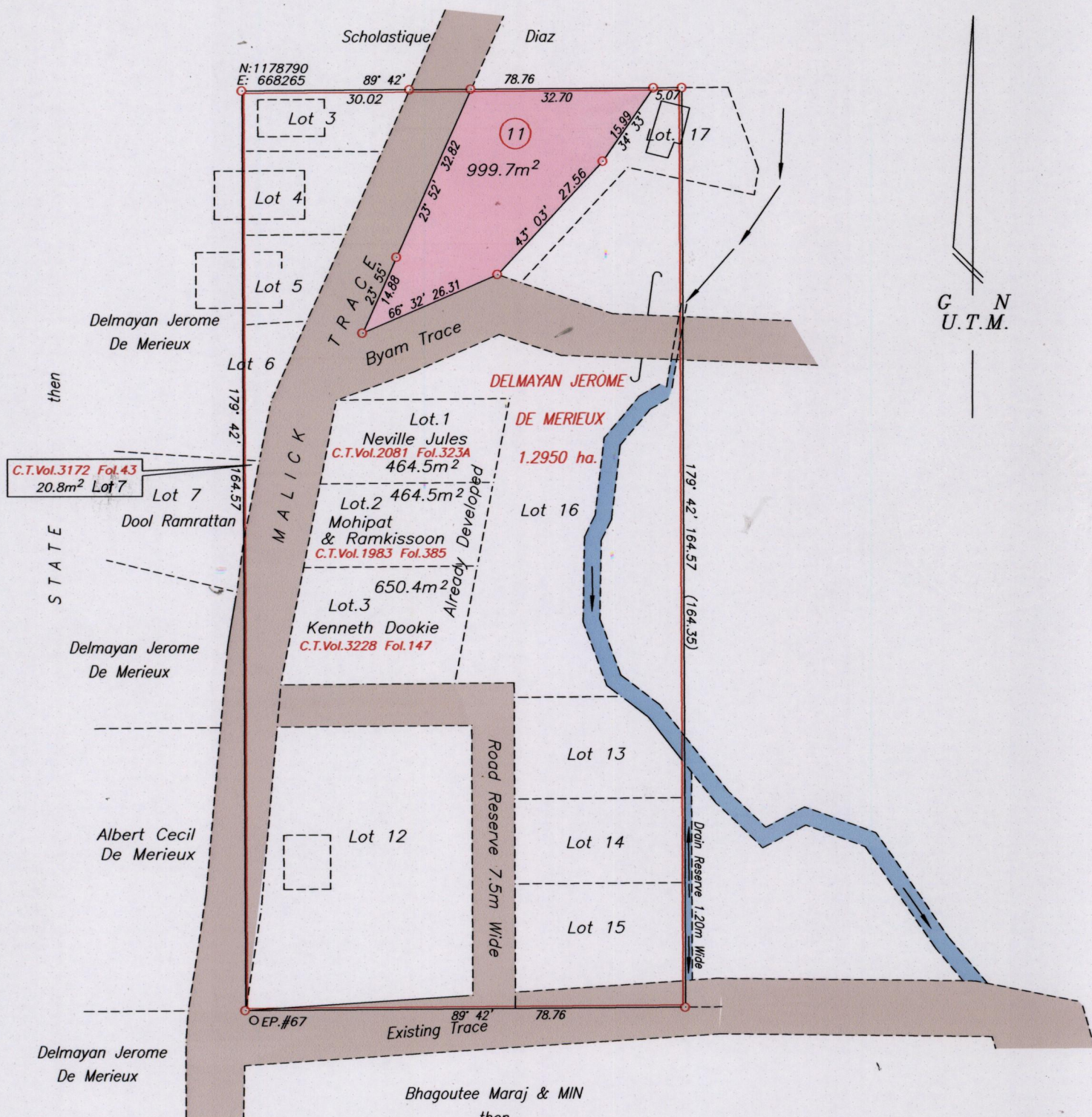


1500/196

1500 Ward of St. Anns  
County of St. George  
Cadastral Sheet B.17.1.

196  
13E  
4/d

R.P.O. Vol. 29 Fol. 189  
C.T. Vol. 1781 Fol. 509



Bhagoutee Maraj & MIN  
then  
National Housing Authority

Approved  
*[Signature]*  
Director of Surveys

○ Denotes Iron found except where otherwise indicated  
Co-ordinates are UTM zone 20N Naparima Datum +/-5m  
scaled from L.&S. 1/10000 sheet.  
Bearings are U.T.M. grid based on Magnetic Needle  
Note: To obtain compass bearings add 19 minutes.

SCALE 1/1000  
Distances are in metres

PLAN of a Parcel of land coloured pink in the Ward of St. Anns  
Containing nine nine nine point seven square metres  
Surveyed by me, with due authority, in April 2004

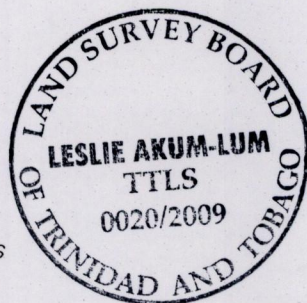
In accordance with Regulation 25 (1) of the Land Surveyors' Regulations 1998,  
I certify that this plan is correct.

Checked by *[Signature]*

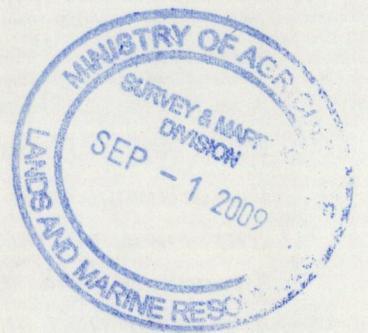
*[Signature]*

Entered.....

Trinidad & Tobago Land Surveyor *[Signature]* 16/4 April 2009







1500/196