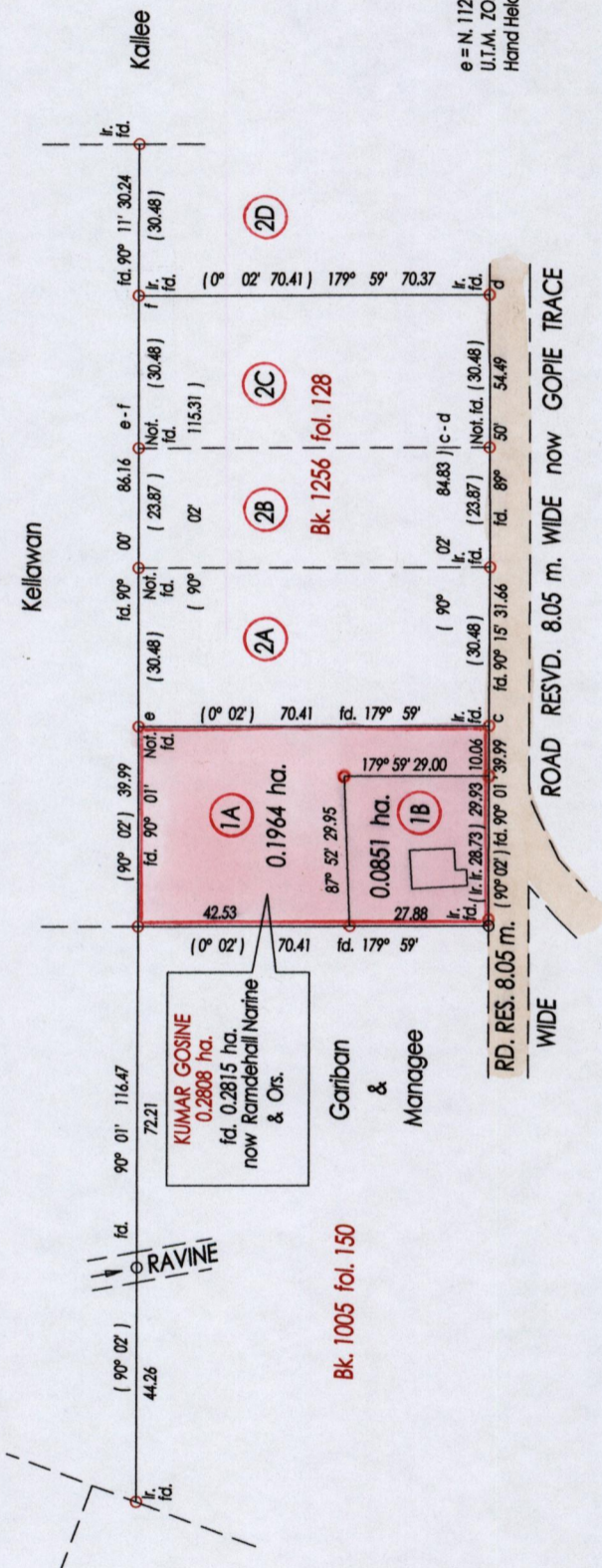


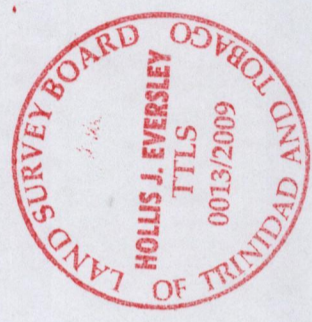
R. P. O. Vol. 120 fol. 463
 C. T. Vol. 1824 fol. 487
 Bk. 1005 fol. 153

Ward of Siparia
 County of St. Patrick
 Cadastral Sheet D. 13 E. 63 E. 2/d



e = N. 1126095 E. 668618
 U.T.M. ZONE 20 Napoanna
 Hand Held G.P.S.

○ Denotes Iron Put Except Stated Otherwise



SCALE 1 : 1500

Bearings are Cassini Grid based on Solar Observations Distances are in Metres
 PLAN of 2 Parcels of land coloured pink in the Ward of Siparia
 Containing together zero point two eight one five hectares
 Surveyed by me, with due authority in, March 2009

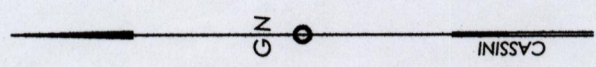
In accordance with Regulation 25 (1) of the Land Surveyors' Regulations 1998,
 I certify that this plan is correct.

Approved *Yvon Gung* Director of Surveys 2009-9-9

Hollis J. Eversley
 Land Surveyor

Checked by
 Entered on
 Trinidad & Tobago Land Surveyor 2009

1509/177
 15000
 191



1500/191

