

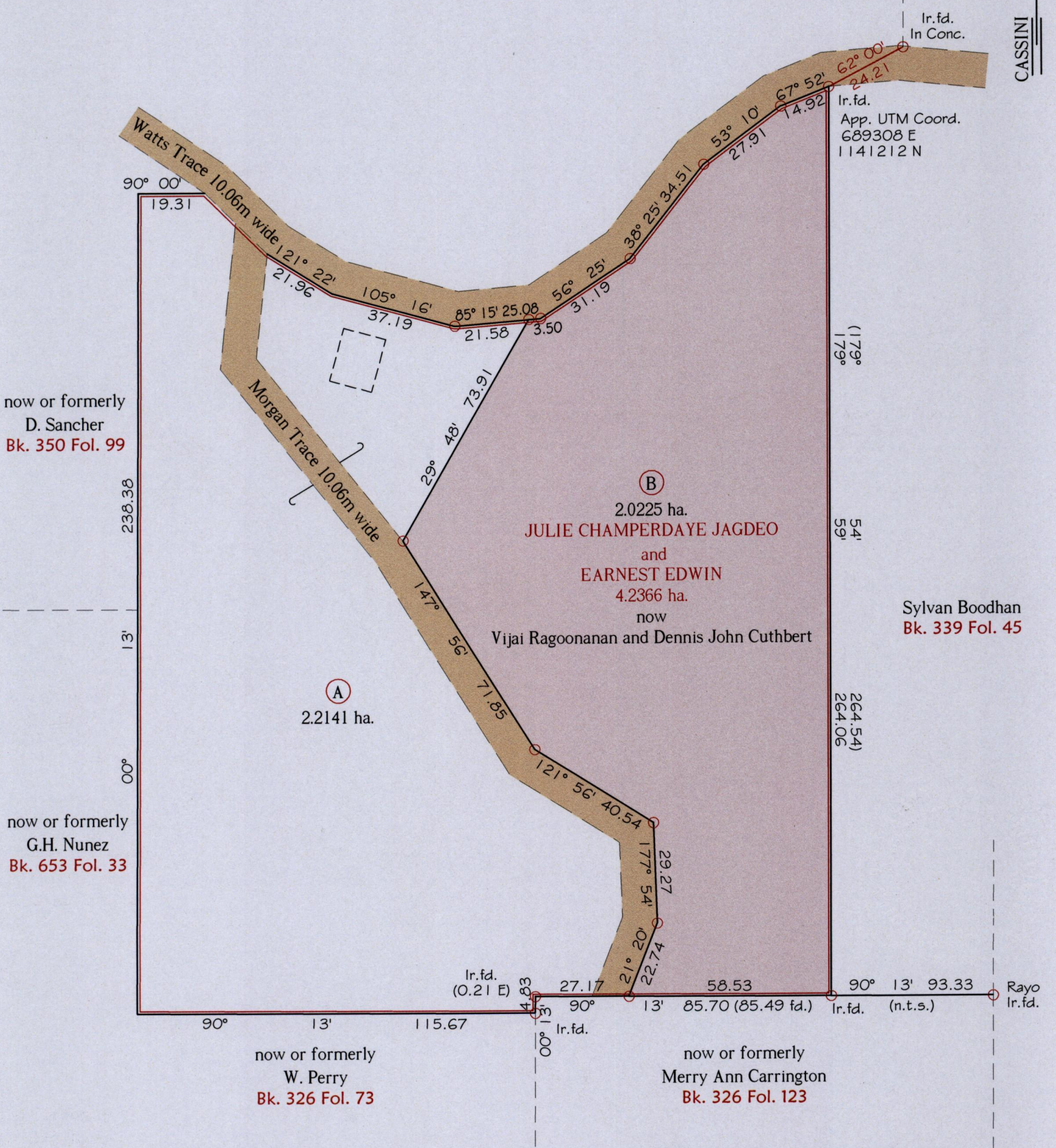
1500/100

1500

Ward of Ortoire  
County of Victoria  
Cadastral Sheet (D.25.M), 54C  
4/a

1836

R.P.O Vol. 164 Fol. 461  
C.T. Vol. 4151 Fol. 27



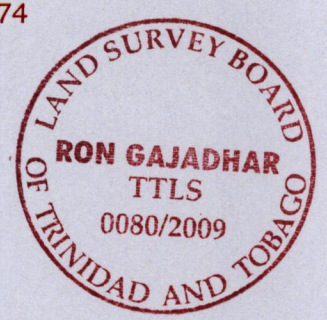
Approved  
*[Signature]*  
Director of Surveys  
2009.9.9

Note - UTM (WGS 84) Coordinates obtained  
from hand held GPS receiver  
± 5.00m

Ref.- Bk. 352 Fol. 274  
SCALE 1:1500

○ Denotes Iron put except stated otherwise.  
Note: Bearings are Cassini grid based on solar observations  
Plan of a Parcel of land coloured pink in the Ward of Ortoire.  
Containing two point zero two two five hectares.  
Surveyed by me, with due authority, in June 2008.  
In accordance with Regulation 25(1) of the Land Surveyors Regulations 1998,  
I certify that this plan is correct.

Distances are in metres.



Checked by *[Signature]*  
Entered .....

*[Signature]*  
Trinidad & Tobago Land Surveyor 01/09/2008 @



