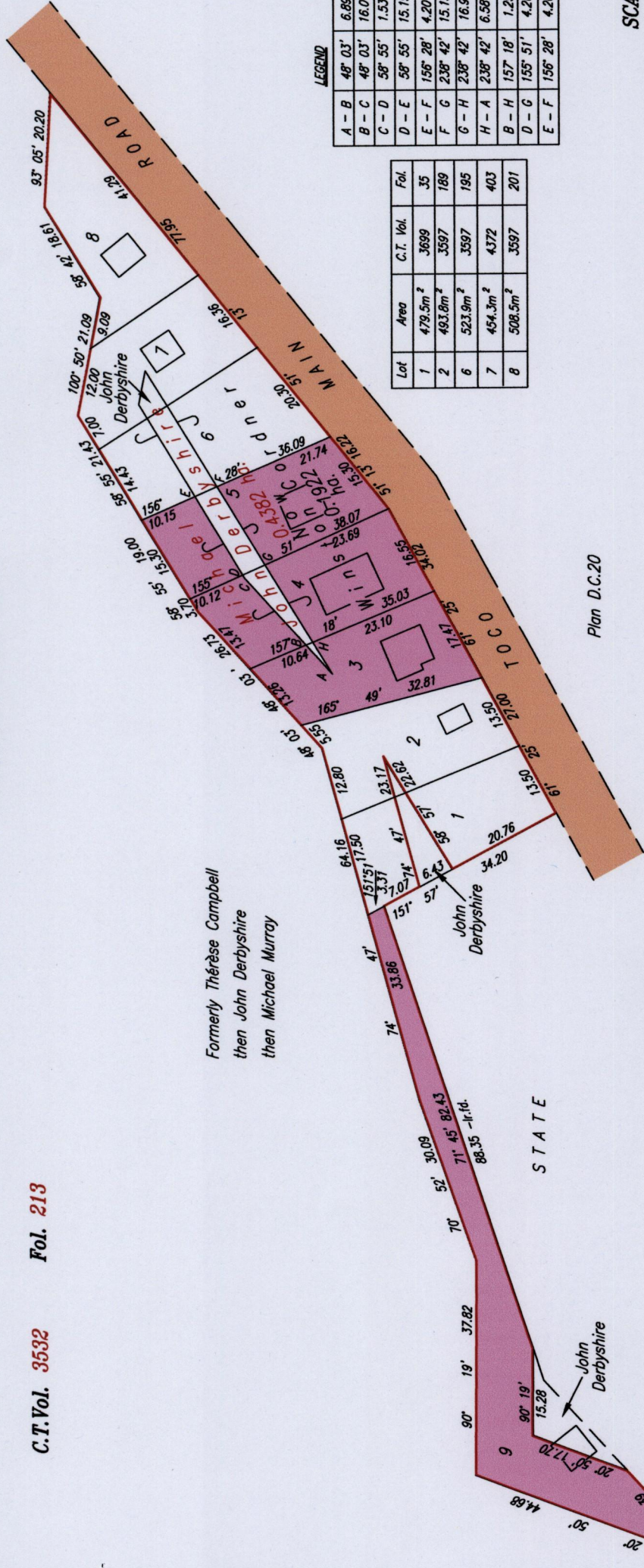


15000

1835

REMAINING PORTION PLAN

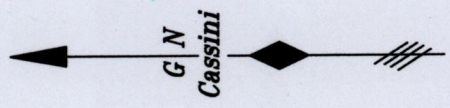
C.T.Vol. 3532 Fol. 213



LEGEND

A-B	48° 03'	6.69
B-C	48° 03'	16.01
C-D	58° 55'	1.53
D-E	58° 55'	15.19
E-F	156° 28'	4.20
F-G	238° 42'	15.15
G-H	238° 42'	16.93
H-A	238° 42'	6.58
B-H	157° 18'	1.29
D-G	155° 51'	4.26
E-F	156° 28'	4.20

Lot	Area	C.T. Vol.	Fol.
1	479.5m <sup>2</sup>	3689	35
2	483.8m <sup>2</sup>	3597	189
6	523.9m <sup>2</sup>	3597	195
7	454.3m <sup>2</sup>	4372	403
8	508.5m <sup>2</sup>	3597	201



SCALE 1:1000

Distances are in METRES



Plan D.C.20

Approved . . . . .  
*[Signature]*  
Director of Surveys  
2009.9.9

This is a true copy of a diagram of point four three eight two hectare originally transferred to Michael John Derbyshire showing a portion coloured pink and containing zero point one nine two two hectare being the remainder after five previous transfers of other portions of the land in accordance with Regulation 25 (1) of The Land Surveyors' Regulations 1998,

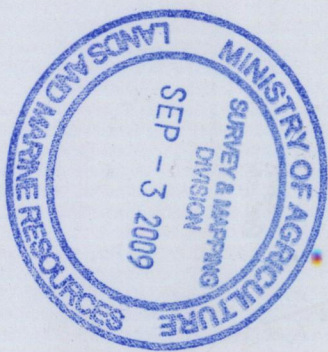
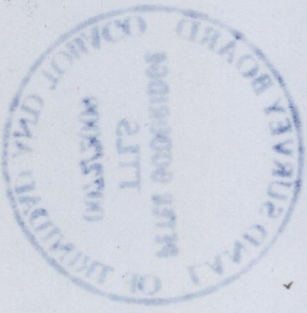
I certify that this plan is correct.

Checked by . . . . .  
*[Signature]*

Entered on . . . . .

*[Signature]*  
1st September 2009  
TTLS  
FILE NO. J041

Trinidad & Tobago Land Surveyor  
C:\LESS 2008\TRINIDAD\JEANVILLE,JOHN\JWG



28/10/09