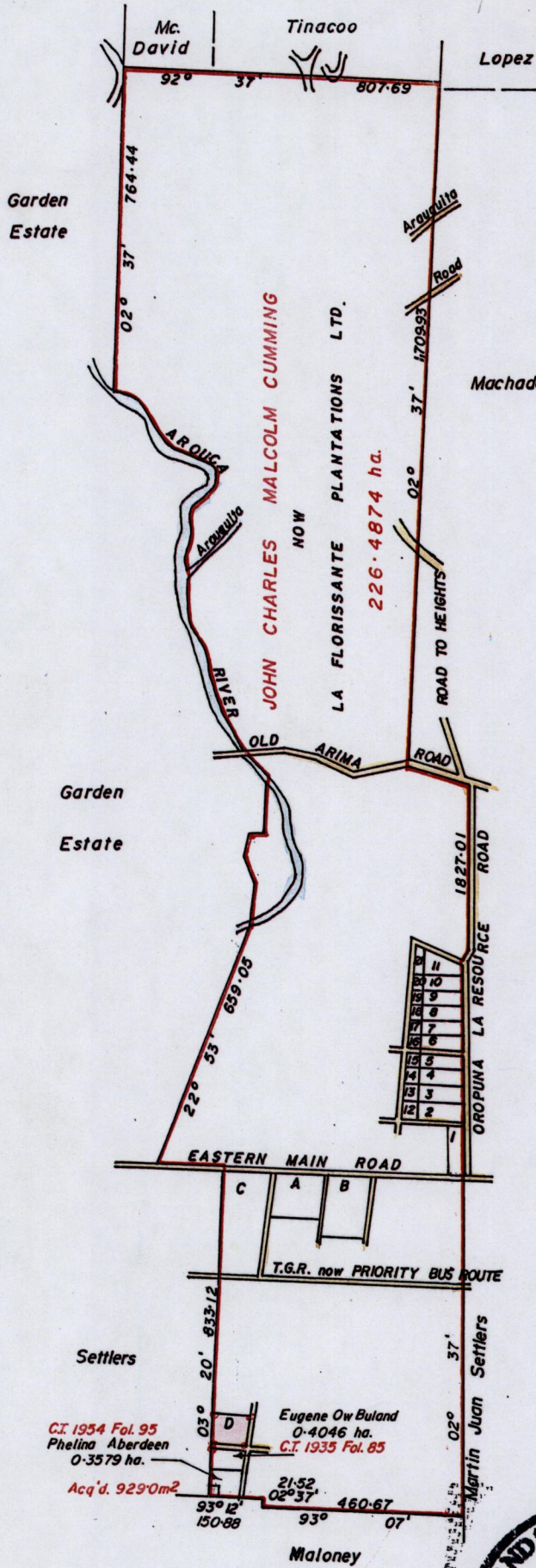


15000 Borough of Arima 179 County of St. George

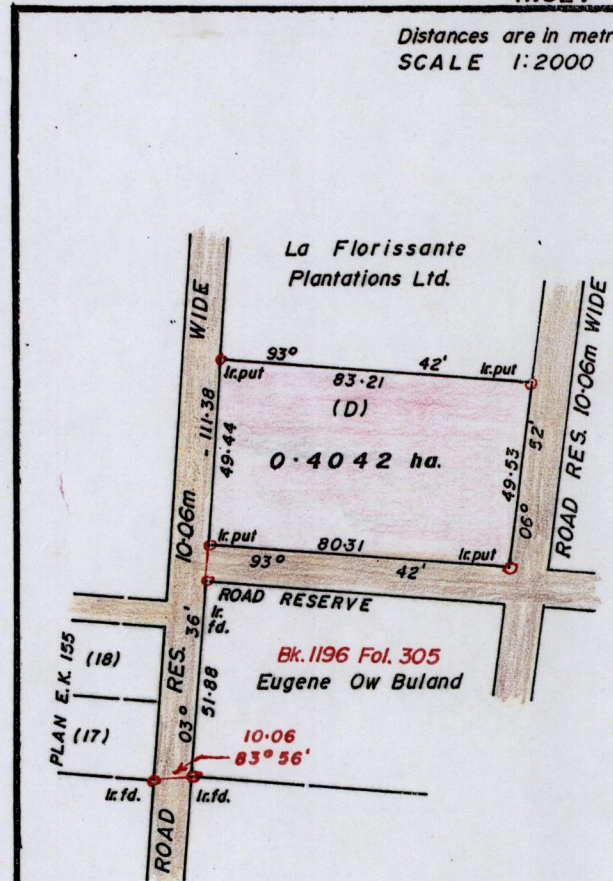


Parcels & Lots	Area	C.I Vol.	Fol.
9819	0.4730 ha.	1899	427
2	0.4047 ha.	1896	65
12	0.1492 ha.	1896	73
10820	0.4629 ha.	1896	83
3	0.4047 ha.	1896	91
5	0.4249 ha.	1896	99
8	0.4047 ha.	1910	99
4	0.4047 ha.	1916	257
6	0.4047 ha.	1916	265
18	0.0784 ha.	1932	309
11	0.6880 ha.	1951	331
A	1.1964 ha.	1900	503
B	1.8110 ha.	1954	265

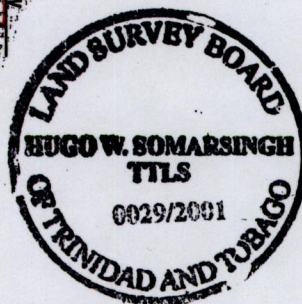


INSET

Distances are in metres SCALE 1:2000



Vide Plan R. D. 56
E. C. 162
S.O.No. 85/71
E. C. 167



Approved.....
Director of Surveys

2009.9.2

SCALE 20chs. to an inch
Distances are in metres

Note: To obtain compass bearings add 17 minutes

PLAN of a Parcel of land coloured pink in the Borough of Arima

Containing zero point four zero four two hectares

Surveyed by me, with due authority in August 1999

In accordance with Rule 25(1) of the Land Surveyors' Regulations 1998, I certify that this plan is correct.

Checked by.....

Entered on.....

Hugo W. Somarsingh
Trinidad & Tobago Land Surveyor
25th October 1999

4 FEB 2002
Lands and
Surveys
Division

1509/179