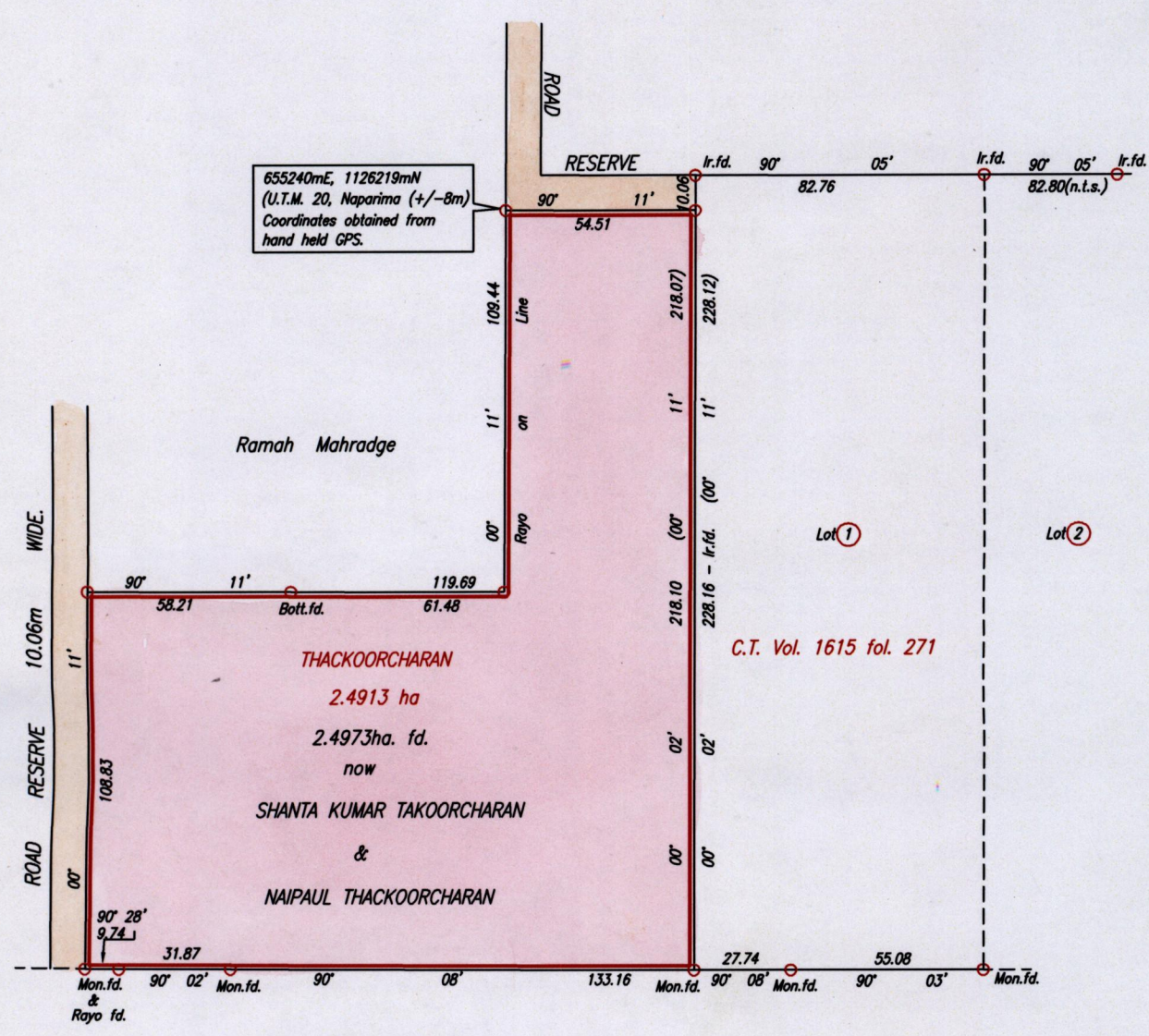


15000 Cadastral Sheet G.11.B. & F. 62F
Ward of La Brea
County of St. Patrick
Rousillac

R.P.O. Vol 174 Fol 343
C.T. Vol. 4657 Fol. 249

Vide Bk. 480 fol 135
Vide Bk. 964 fol 181



Morne L' Enfer Reserve

Approved *[Signature]*
Director of Surveys
2509-8-08

○ Denotes Iron put except otherwise stated.

Bearings are Cassini Grid based on Solar Observations.

Plan of a Parcel of land coloured pink in the Ward of La Brea
Containing two point four nine seven three hectares.

Redefined by me, with due authority, in May, 2009

In accordance with Regulation 25(1) of the Land Surveyors' Regulations 1998,

I certify that this plan is correct.

Checked by *[Signature]*

Entered on.....

[Signature]
Trinidad & Tobago Land Surveyor *[Signature]* 2009

SCALE 1:2000
Distances are in Metres

