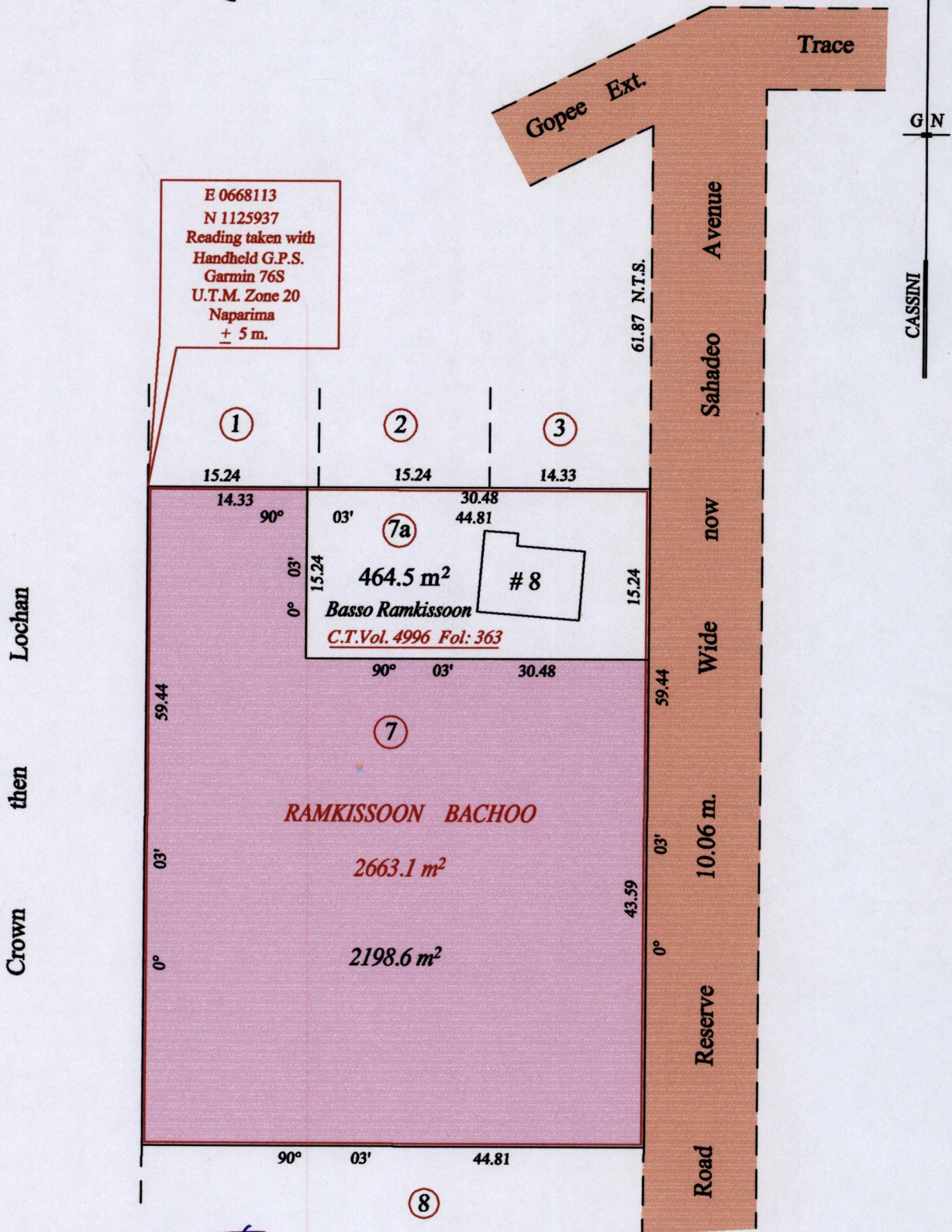


R.P.O. Vol. 95 Fol. 401
 C.T. Vol. 2624 Fol. 169
 C.T. Vol 5614 Fol 507

REMAINING PORTION

1500

Ward of Siparia
 County of St. Patrick
 Cadastral Sheet (G.13.E.) 63.E.
 2/d



Crown then Lochan

Approved *[Signature]*
 Director of Surveys

Vide Bk. 1117 fol. 109

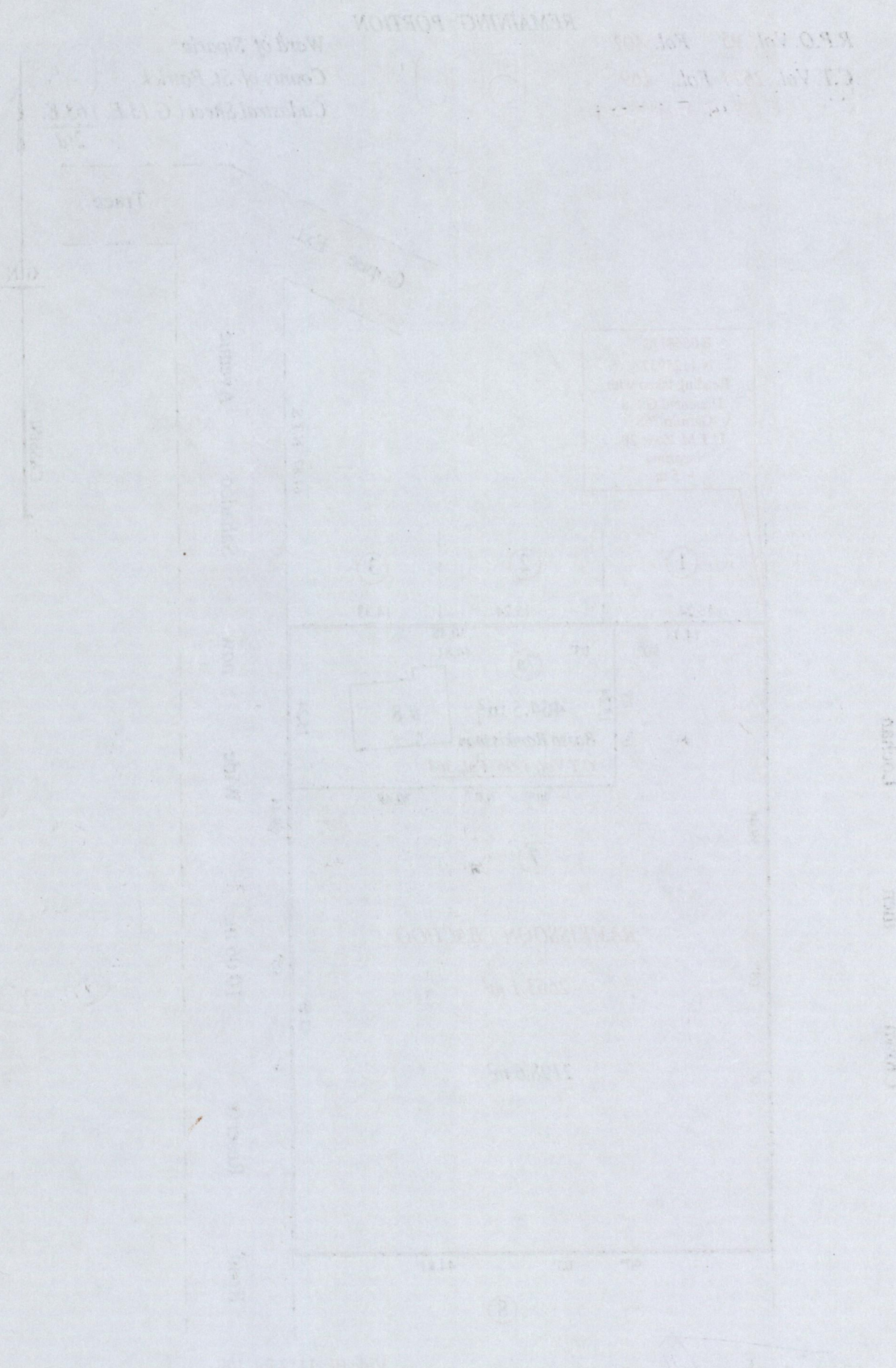
SCALE : 1:1500

Note: Bearings are cassini grid based on solar observations Distances are in metres
 This is a true copy of a diagram of two thousand six hundred and sixty three point one square metres, originally transferred to Ramkissoon Bachoo, shewing a portion coloured pink and containing two thousand one hundred and ninety eight point six being the remainder after one (1) previous transfer of another portion of the land. In accordance with Regulation 25 (1) of the Land Surveyors' Regulations 1998, I certify that this plan is correct.

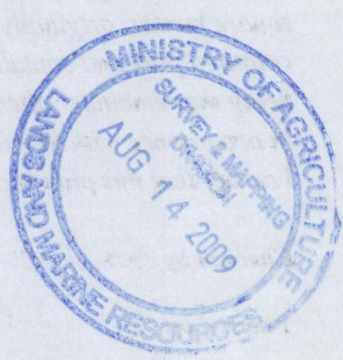
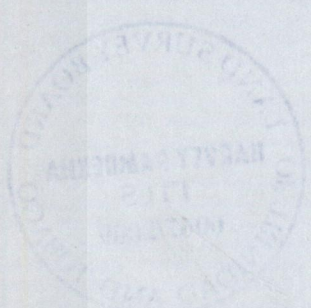
Checked by *[Signature]* 17/8/2009

Entered on Trinidad & Tobago Land Surveyor 13. 08. 2009





REMAINING PORTION
 R.P.O. Vol. 12, Fol. 101
 C.I. Vol. 12, Fol. 101
 (Colonial Survey Office)



1500/165