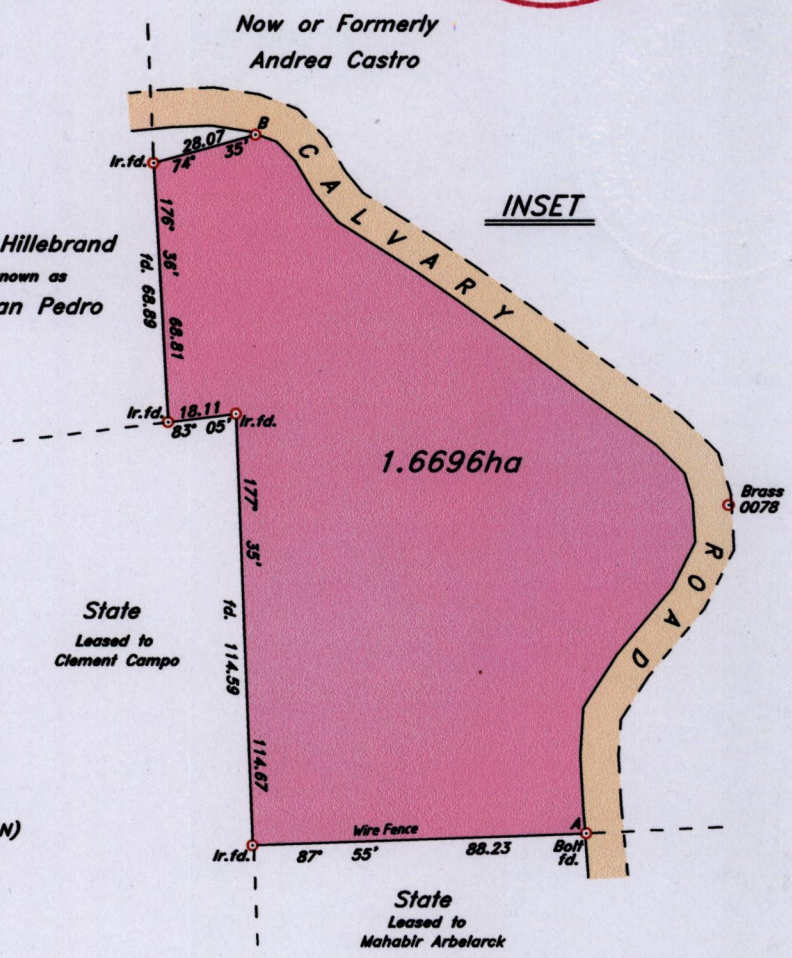


VIDE:  
 Bk.882 Fol.217  
 Bk.854 Fol.473



Scale 1:4000

Ir. pt.	B	
254° 35'	205.15	0.00
28.07	201.03	4.31
	194.41	6.52
	184.60	7.40
	175.07	9.78
	165.75	15.61
	153.63	23.08
	142.78	29.29
	127.07	37.89
	105.29	49.48
	85.65	60.36
	75.51	64.10
	67.87	62.95
	57.61	58.74
	49.20	48.11
	39.47	27.53
	30.65	13.58
	19.40	7.32
	6.90	2.29
	0.00	0.00
Ir. pt. 267° 55'	A	334° 36'
88.23		



Brass 0078 : (0687242.928m E, 1178047.920m N)  
 U.T.M (NAPARIMA) Coordinate  
 zone. 20 (Accuracy ± 0.001m)

A - Brass 0078 94.70 23° 07'

Approved *Trevor Auguste*  
 Director of Surveys  
 2009.8.15

SCALE 1:2000

○ Denotes Iron Put unless otherwise stated.  
 Bearings are Cassini Grid, based on Solar Observations.  
 Distances are in metres.

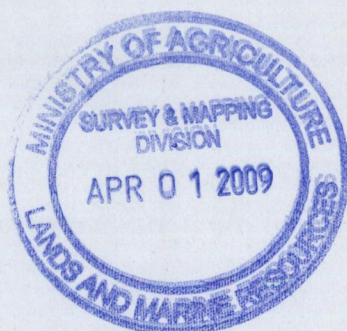
PLAN of a Parcel of land coloured pink in the Ward of Arima  
 Containing One Point Six Six Nine Six Hectares.  
 Surveyed by me, with due authority in May 2007 at the request of Trevor Auguste  
 In accordance with Regulation 25 (1) of the Land Surveyors' Regulations 1998, I certify  
 that this plan is correct.

Checked by *M. J. M. A.*

Entered on .....

*Colvin Blaize*  
 Trinidad and Tobago Land Surveyor 27<sup>th</sup> February 2009.





1,500/161