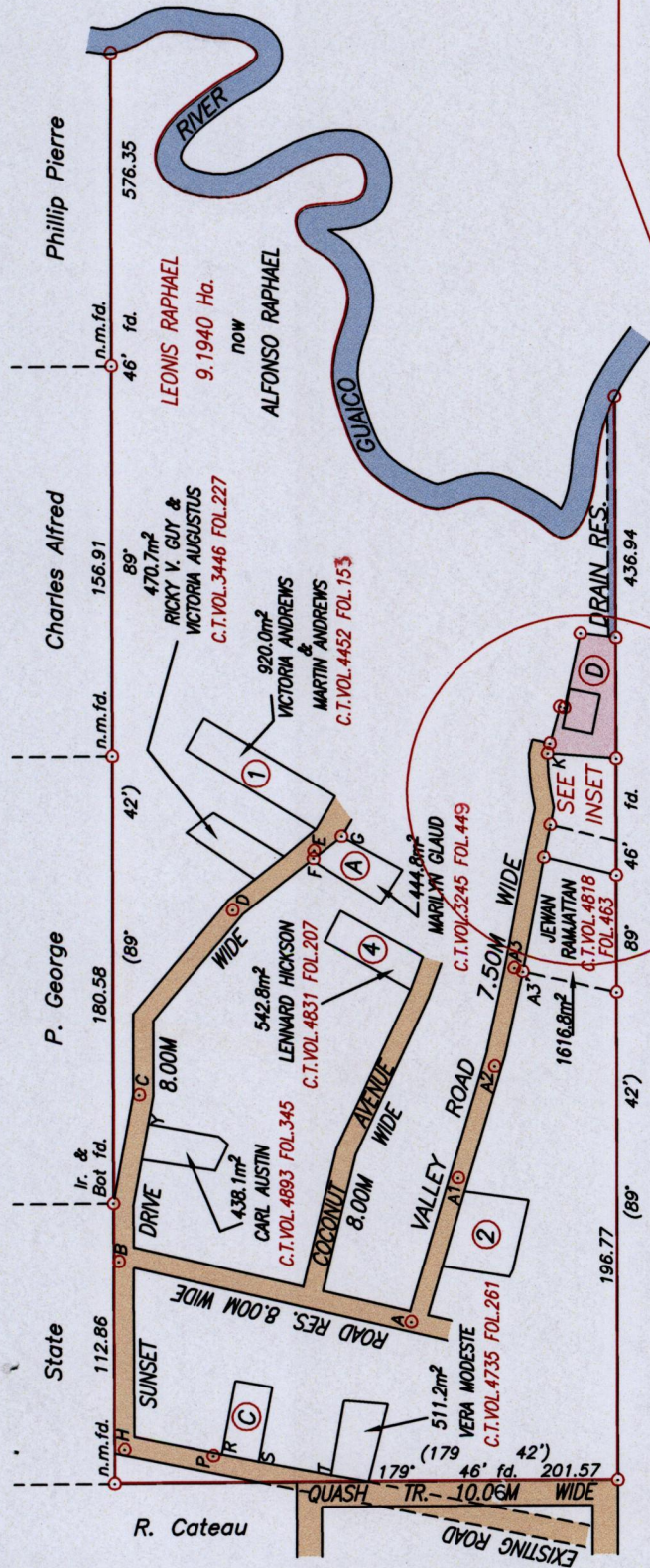
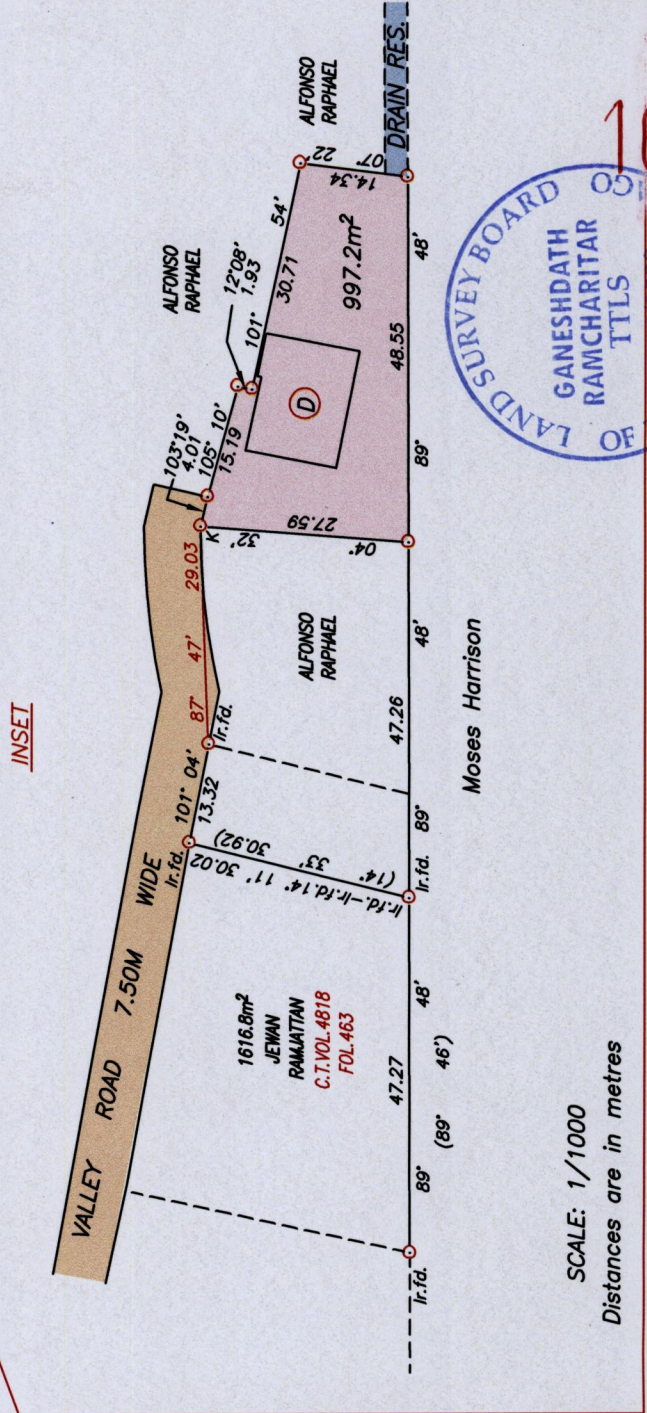


1500



STA.	BRG.	DIST.
P-H	04° 12'	35.68
H-B	88° 19'	75.74
B-B1	84° 37'	23.57
B-C	96° 44'	68.04
C-D	116° 38'	83.07
D-E	143° 33'	40.70
E-F	274° 27'	3.19
F-P	351° 30'	3.35
R-S	191° 33'	15.00
S-T	190° 31'	29.42
A-B	11° 51'	119.35
A-A1	107° 59'	60.92
A1-A2	107° 59'	47.43
A2-A3	101° 08'	40.32
A3-A3'	203° 42'	3.75

BAUROB SINGH & SOOKMIN SINGH
C.T.VOL.3323 FOL.9 475.6m²



INSET

SCALE 1/3000
Distances are in metres

SCALE: 1/1000
Distances are in metres

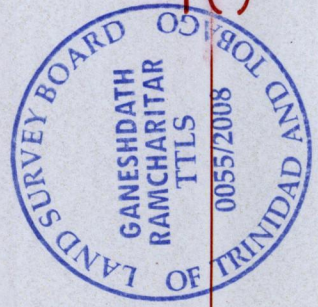
Approved Vera Leng
Director of Surveys
28/9/12

Co-ordinates obtained by Hand Held G.P.S. (WGS84 U.T.M. Zone)
Point K
Accuracy ± 4m
E 706714.00m
N 1172011.00m

Denotes Iron put except otherwise stated
Bearings are Cassini Grid based on Solar Observations
Plan of a Parcel of land coloured pink in the Ward of Manzanilla
Containing nine hundred and ninety seven point two square metres
Surveyed by me, with due authority, on 25th September 2007
In accordance with Regulation 25 (1) of the Land Surveyors' Regulations 1998,
I certify that this plan is correct.

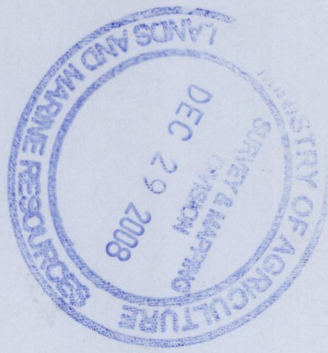
Ganeshdath Ramcharitar

Entered on ...
Checked by. M.M. 25/3/109 Trinidad & Tobago Land Surveyor ... 18/12 ... 20.08



16

1500/16



1500/16

1500/16