

R.P.O Vol. 137 Fol. 353
C.T. Vol. 4179 Fol. 405

Coordinates

Ir.pt. a : N 1121885.00
E 677288.00

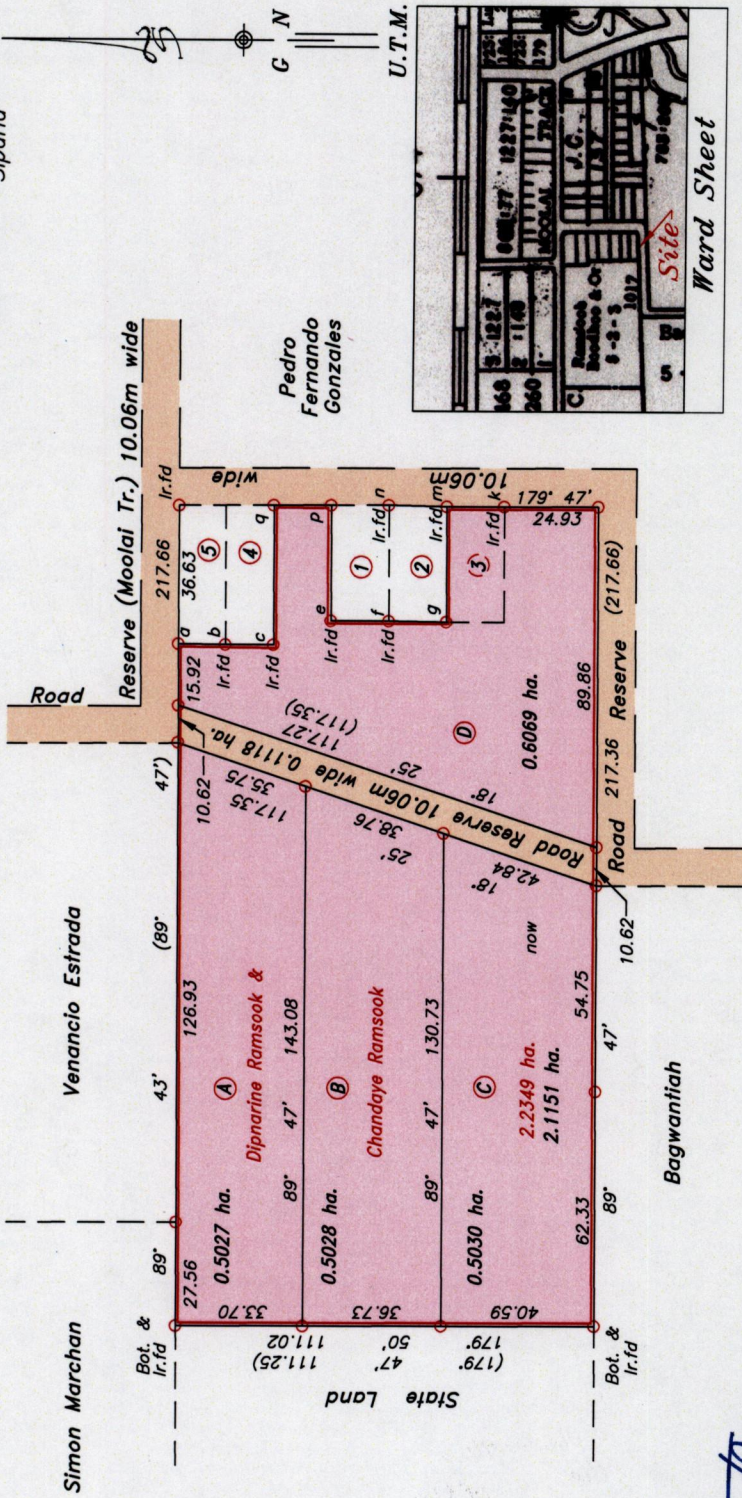
Error Statement : ±4m

Datum Definition : U.T.M. Zone 20 Naparima

Source : Magellan Hand Held GPS

Ward of Siparia
County of St. Patrick
Cadastral Sheet (G.13.M) , 73B
2/a

Parcel Address: Moolai Trace,
Siparia



Line	Bearing	Distance
a - b	179° 39' (179° 47')	12.42 (12.68)
b - c	179° 58' (179° 47')	12.73 (12.68)
c - q	89° 43' (89° 47')	36.86 (36.58)
e - f	180° 03' (179° 47')	15.35 (15.24)
f - g	180° 46' (179° 47')	15.28 (15.24)
k - m	0° 00' (179° 47')	15.24 (15.24)
m - n	1° 11' (179° 47')	15.41 (15.24)
q - p	179° 47'	15.24
e - p	89° 47'	30.48
g - m	89° 47'	30.48

LOTS	NAME	C.T. Reference	AREA(m ²)
①	Kishore Ramnath	Vol. 2033 Fol. 61	464.5
②	Kishore Ramnath	Vol. 2033 Fol. 55	464.5
④	Kishore Ramnath	Vol. 2033 Fol. 73	464.5
⑤	Kishore Ramnath	Vol. 2033 Fol. 75	464.5

Approved.....
Lynn Geng
Director of Surveys
2009.8.17

○ Denotes Iron pui except otherwise stated.

Note: Bearings are U.T.M. grid based on solar observations.

Plan of 4 Parcels of land coloured pink in the Ward of Siparia containing together two point one one one

Surveyed by me, with due authority, in March 2001

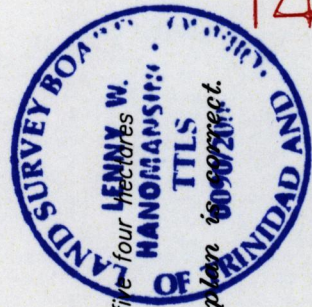
In accordance with Regulation 25(1) of the Land Surveyors' Regulations 1998, I certify that this plan is correct.

Checked by.....
Lenny W. Hanomansingh
Entered

Trinidad & Tobago Land Surveyor 27/05/2009

Ref : Bk. 1017 Fol. 187
SCALE 1 : 2000

Distances are in metres.



1500

149

