

R.P.O. Vol. 1211

Fol. 461

Cadastral Sheet E.8.M. $\frac{36D}{2/c}$

C.T. Vol. 85

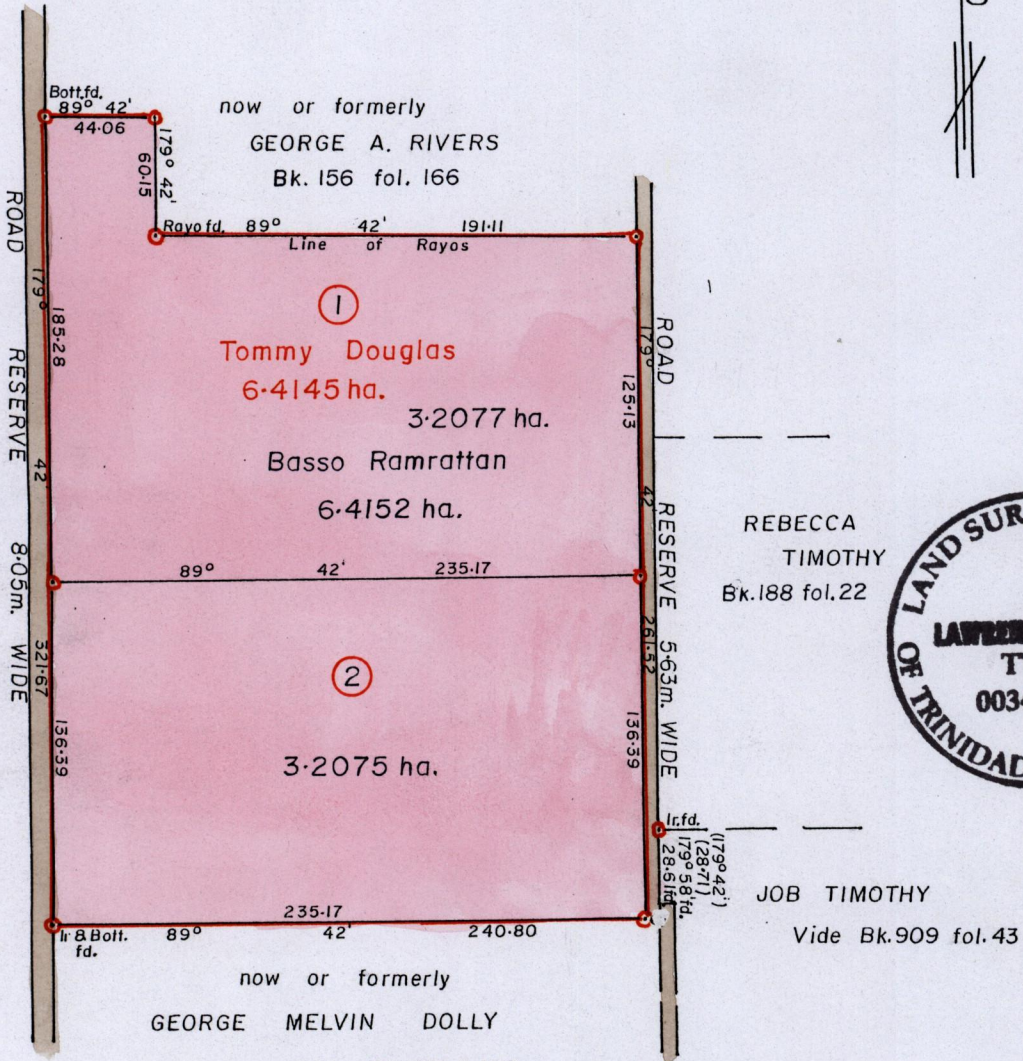
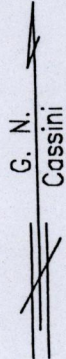
Fol. 441 1500

Ward of Turure

County of St. Andrew

130

See Bk.156 fol.151



REBECCA TIMOTHY
Bk.188 fol.22

JOB TIMOTHY
Vide Bk.909 fol.43

SCALE 1/3000

Distances are in metres

Approved

[Signature]
Director of Surveys
2009.8.7

○ Denotes Iron put except where otherwise stated

Bearings are based on Solar Observations

PLAN of 2 Parcels of land coloured pink in the Ward of Turure
Containing altogether six point four one five two hectares.

Surveyed by me, with due authority, in July 2004

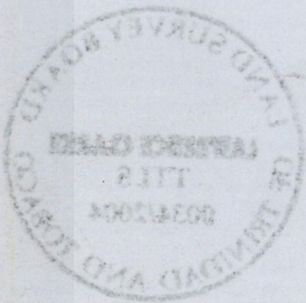
In accordance with Regulation 25 (1) of the Land Surveyors' Regulations 1998,
I certify that this plan is correct.

Checked by

[Signature]

Entered on

Trinidad & Tobago Land Surveyor. 15th November 2004.



1500/130