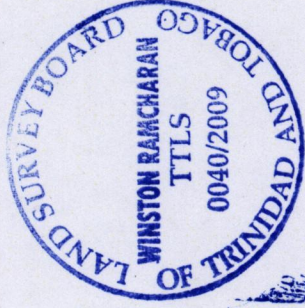
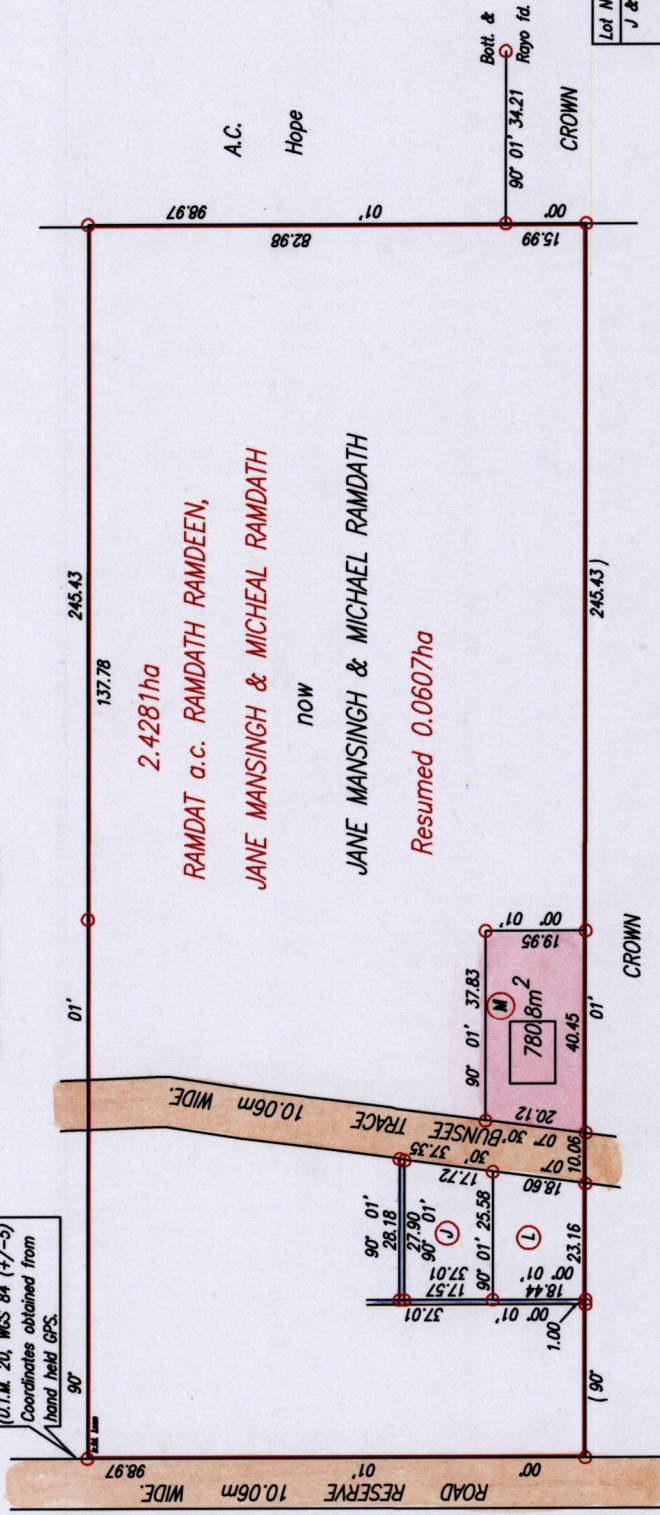


R.P.O. Vol. 237  
 C.T. Vol. 3216  
 Bk. 420 fol. 115  
 Plan K.H. 25

Fol. 217  
 Fol. 359

Cadastral Sheet G.18.L. Z3C  
 4/D  
 Ward of Siparia  
 County of St. Patrick  
Penal

673299mE, 1118360mN  
 (U.T.M. 20, WGS 84 (+/-5))  
 Coordinates obtained from  
 hand held GPS.



1500/121  
 15(00)

126

Lot No. J & L	Name	C.T.No.	Fol.	Area
	Deodath Ragoonanan & Mahadaye Ragoonanan	3710	443	(J) 469.9m <sup>2</sup> (L) 449.4m <sup>2</sup>

Approved  
*Winston Ramcharan*  
 Director of Surveys  
 2009.8.7

PLAN of a Parcel of land coloured pink in the Ward of Siparia  
 Containing seven hundred and eighty point eight square metres.  
 Surveyed by me, with due authority, in April, 2009  
 In accordance with Regulation 25 (1) of the Land Surveyors' Regulations 1998,  
 I certify that this plan is correct.

SCALE 1:1500  
 Distances are in metres  
 Denotes Iron found except otherwise stated  
 Bearings are Cassini Grid based on Solar Observations

Checked by: 449107/24  
*Winston Ramcharan*  
 Entered on . . . . . Trinidad & Tobago Land Surveyor. 4<sup>th</sup> June . . . . . 2009.



1504/26

