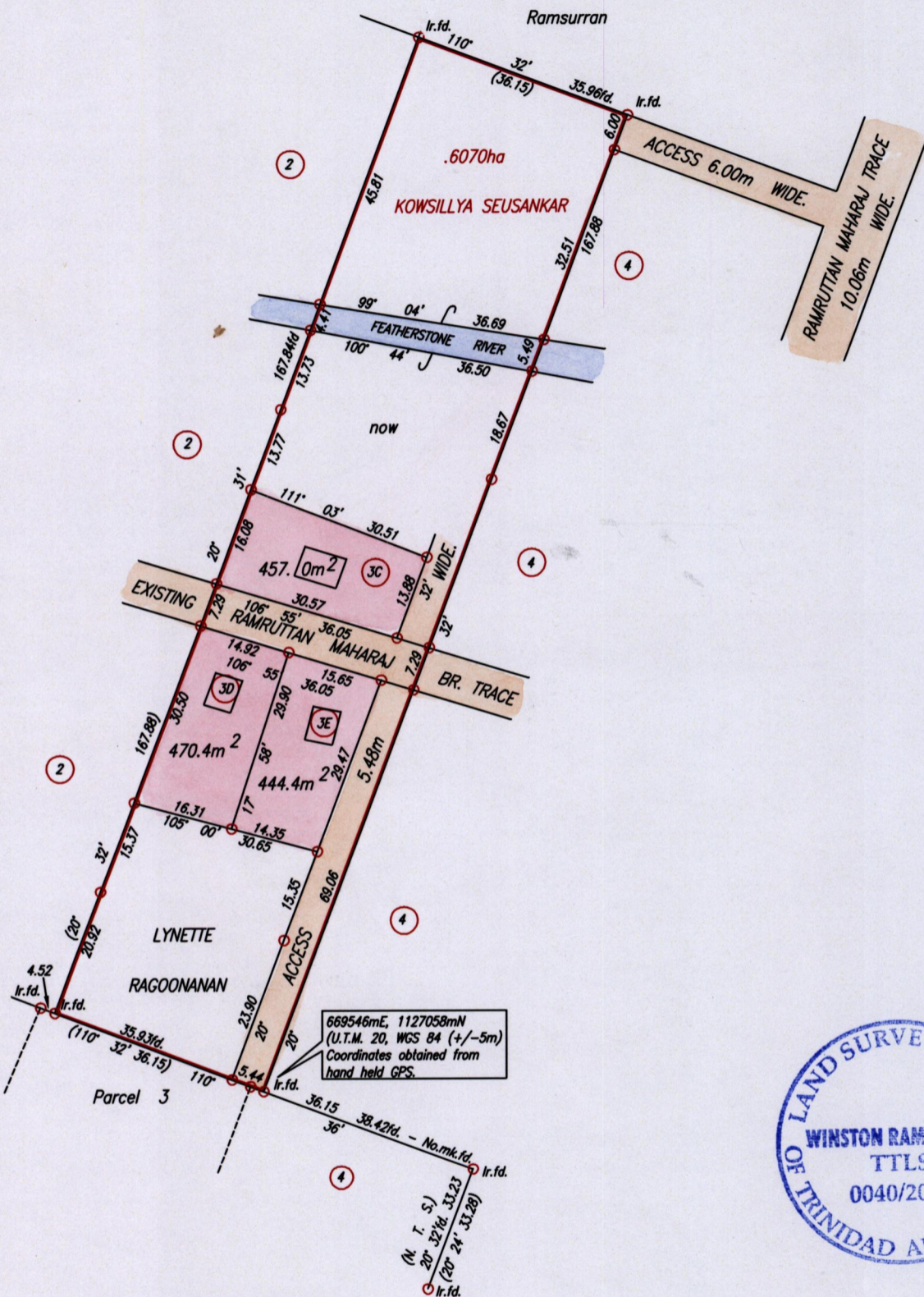


R.P.O. Vol. 55 Fol. 455  
 C.T. Vol. 4371 Fol. 393  
 Bk. 999 fol. 121 & 122  
 Bk. 1175 fol. 99

1500 Cadastral Sheet G.13.B.  $\frac{63F}{1/a}$  123

Ward of Naparima  
 County of Victoria  
Debe,  
Parcel 3



Cassini  
G  
W



Approved *[Signature]*  
 Director of Surveys  
 2009.7.24

SCALE 1:1000  
 Distances are in metres

○ Denotes Iron put except otherwise stated  
 Bearings are Cassini Grid based on Solar Observations  
 PLAN of 3 Parcels of land coloured pink in the Ward of Naparima  
 Containing together zero point one three seven two hectare.  
 Surveyed by me, with due authority, in November, 1992 & April, 2009  
 In accordance with Regulation 25 (1) of the Land Surveyors' Regulations 1998,  
 I certify that this plan is correct.

Checked by *[Signature]* *[Signature]*

Entered on . . . . . Trinidad & Tobago Land Surveyor. *[Signature]* . . . . . 2009.





1500/23