

150012  
15000

12

R.P.O. Vol.

Fol.

Cadastral Sheet D.24.N. & G.5.B. 54B  
4/d

C.T. Vol. 4085

Fol. 225

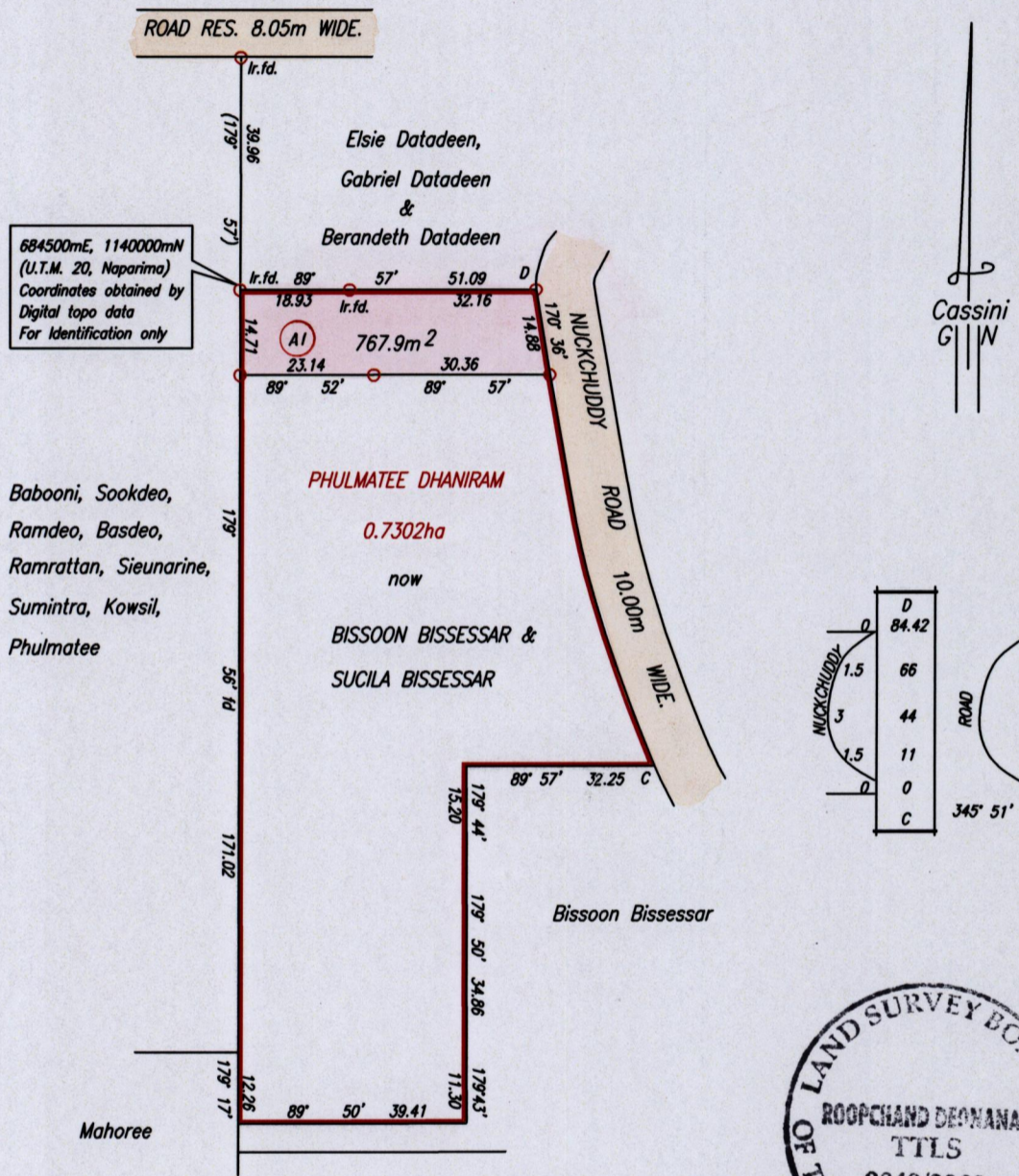
Ward of Savana Grande.

Plan R.H. 139

County of Victoria

Bk.1220 fol. 20

Princes Town



Approved

*[Signature]*  
Director of Surveys

SCALE 1:1250

Distances are in metres

○ Denotes Iron put except otherwise stated  
 Bearings are Cassini Grid based on Solar Observations  
 PLAN of a Parcel of land coloured pink in the Ward of Savana Grande  
 Containing seven hundred and sixty seven point nine square metres.  
 Surveyed by me, with due authority, in May, 1992  
 In accordance with Regulation 25 (1) of the Land Surveyors' Regulations 1998,  
 I certify that this plan is correct.

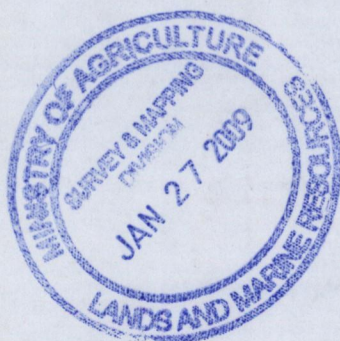
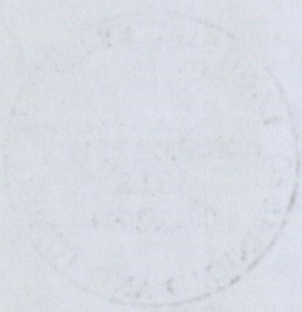
Checked by. *[Signature]* 23/3/09

*[Signature]*

Entered on . . . . .

Trinidad & Tobago Land Surveyor. 26<sup>th</sup> January 2009.  
PATH = E:\700 E:\Drawings 09\PDhaniram. dwg.

Original BK. 1220 fol. 20



1500/12