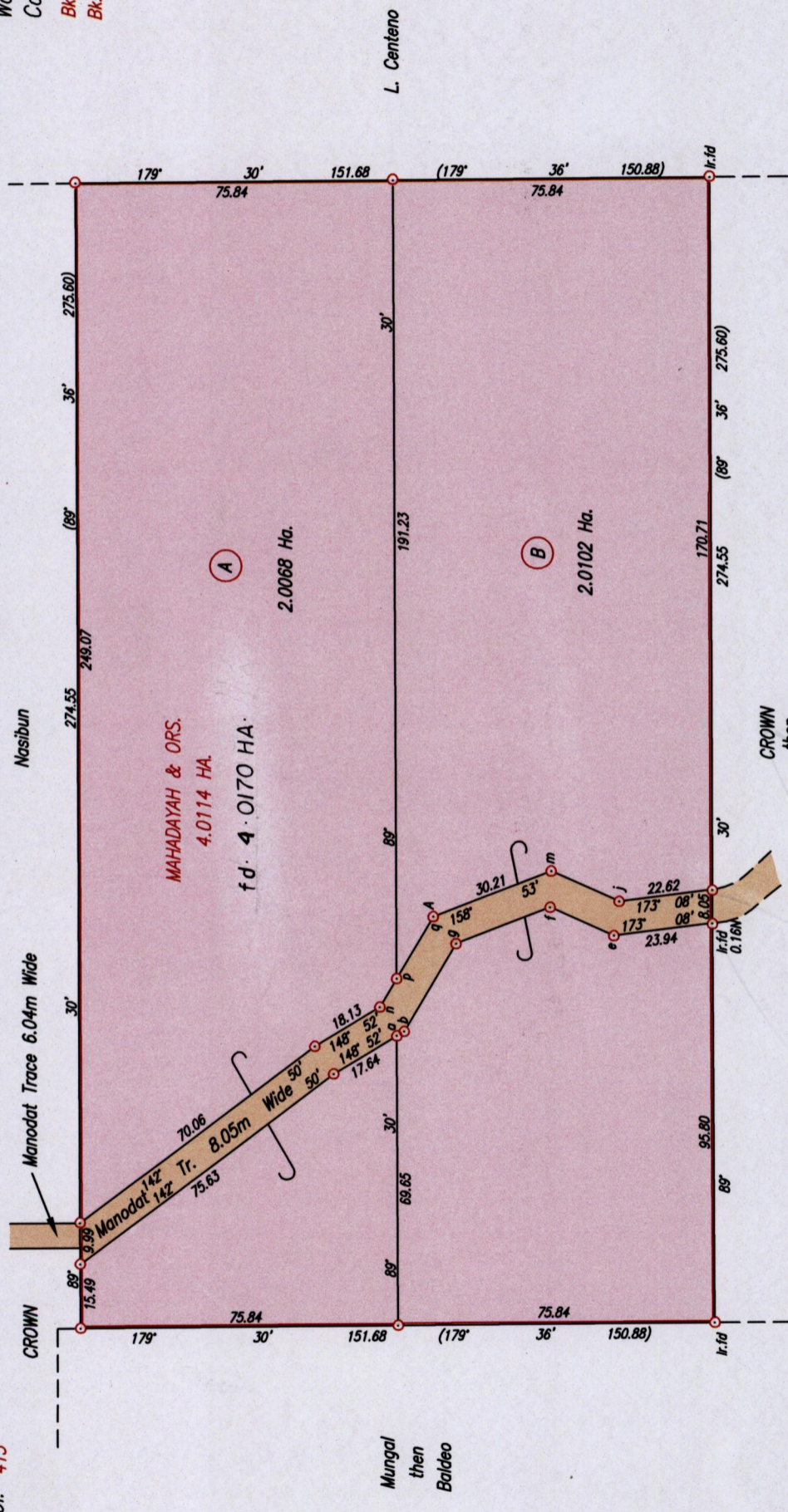


1500

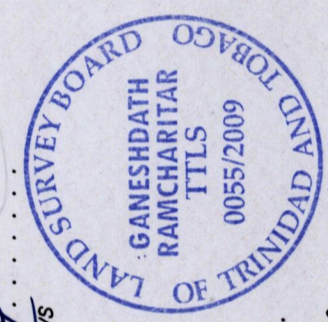
1009

Legend	Sta.	Bearing	Dist.
a - b	148° 52'	2.05	
e - f	24° 02'	16.74	
g - f	158° 53'	24.11	
b - g	120° 21'	24.36	
j - m	24° 02'	17.86	
n - p	120° 21'	7.89	
p - q	120° 21'	17.23	



SCALE 1/1500
Distances are in metres

Point A
Co-ordinates obtained by Hand Held G.P.S. (WGS84 U.T.M. Zone 20)
Accuracy ± 10m
E 684622.00m
N 1168748.00m



Approved
[Signature]
Director of Surveys
2009.7.14

Note: To obtain Cassini bearing + 18 minutes
○ Denotes Iron put except otherwise stated
Bearings are U.T.M. Grid based on Solar Observations
Plan of 2 Parcels of land coloured pink in the Ward of Cunupia
Containing together four point zero one seven zero hectares
Surveyed by me, with due authority, in August 2008
In accordance with Regulation 25 (1) of the Land Surveyors' Regulations 1998,
I certify that this plan is correct.

Entered on
Checked by *[Signature]* Ramcharitar, Sr.
26/8/09
Trinidad & Tobago Land Surveyor 2009

69/10051

