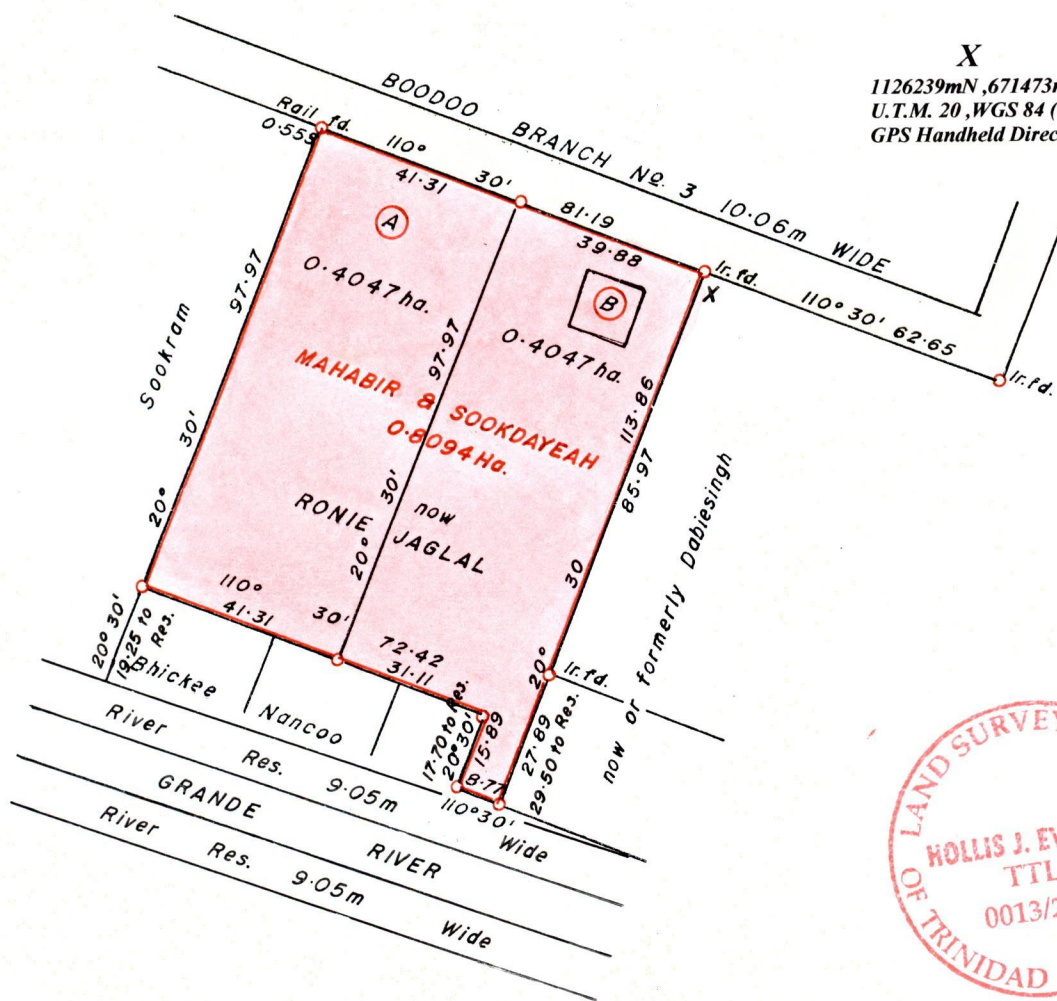


1439

}}

R.P.O Vol. 308 Fol. 633
C.T. Vol. 1886 Fol. 389
Vol. 5401 Fol. 57

Ward of Naparima.
County of Victoria.
Cadastral Sheet G.13.C. 63F
1/b,1/d



X
1126239mN, 671473mE.
U.T.M. 20, WGS 84 (+/-5.0m)
GPS Handheld Direct Obs.



Bk. 1010 : 135.

SCALE 1 : 1500.

Distances are in METRES

o Denotes Iron Put except otherwise stated
Bearings are Cassini Grid based on Solar Observations.

Approved. *[Signature]*
Director of Surveys. 2011.2.28

**PLAN of 2 Parcels of land coloured in PINK in the Ward of Naparima.
Containing together zero point eight zero nine four hectare.
Surveyed by me, with due authority, in August 2009.
In accordance with Reg. 25(1) of the Land Surveyors' Regulations 1998,
I certify that this plan is correct.**

Checked by *[Signature]*
Entered

[Signature]
Trinidad and Tobago Land Surveyor..... 2009.

Original bl. 1308 : 114

Lot No.	Ct. Volume & Folio	NAMES
A	5401 fol. 65	RAMCHARAN LATCHMAN
B		



Now 1439/88
~~1376/59~~