

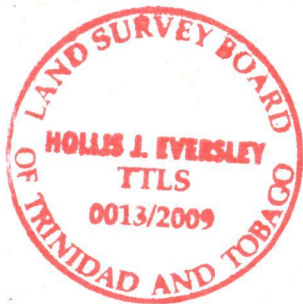
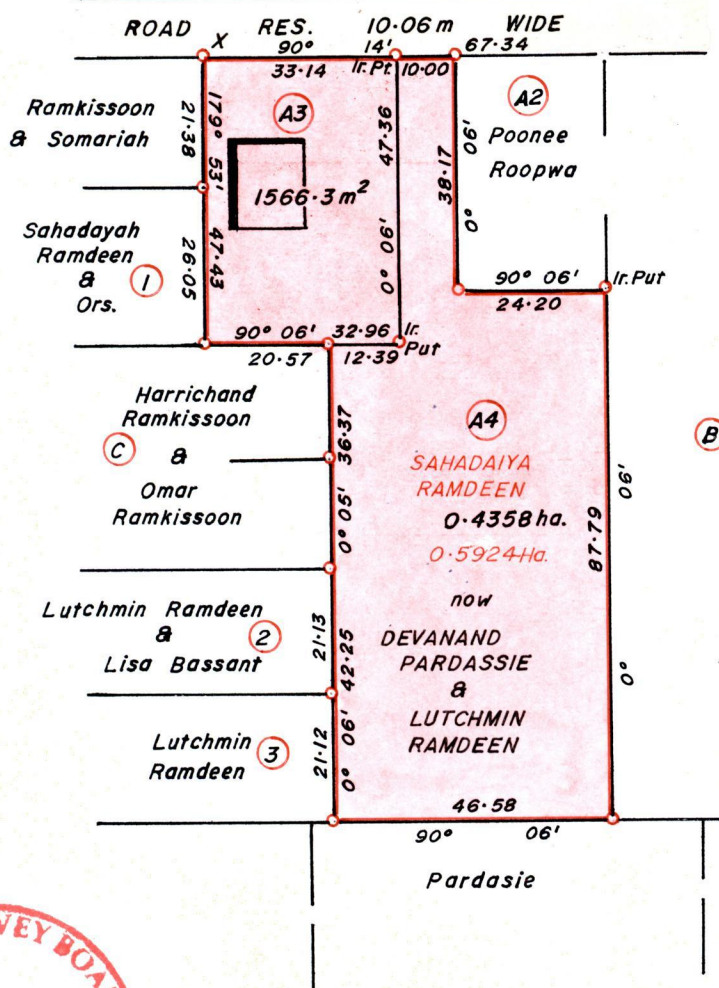
1439

834

R.P.O Vol 274 Fol. 531  
C.T. Vol. 4788 Fol. 13

Ward of Siparia.  
County of St. Patrick.  
Cadastral Sheet G.14.J. 63F; 73C  
4/c 2/a

1122000mN, 672930mE  
X-UTM 20, WGS84 (+/-5.0m)  
GPS Handheld Direct Obs.



Bk. 1358 : 205.

SCALE 1 : 1250.

Distances are in METRES

o Denotes Irons etc. except otherwise stated

Bearings are Cassini Grid based on Solar Observations.

Approved: *[Signature]*  
Director of Surveys. 2010.3.22

PLAN of 2 Parcels of land coloured in PINK in the Ward of Siparia.  
Containing together zero point five nine two four hectare.

Surveyed by me, with due authority, in August 2008.

In accordance with Reg. 25(1) of the Land Surveyors' Regulations 1998,  
I certify that this plan is correct.

Checked by *[Signature]* 3/5/10

*[Signature]*  
6th August

Entered .....

Trinidad and Tobago Land Surveyor..... 2009.

Lot #	C.T. VOL & Folio	Names
A1		
A2		
A3	5228 fol 485	Devanand Pardassie
A4	5228 fol 487	Lutchmin Ramdeen.

new 1439/84  
 1333/154