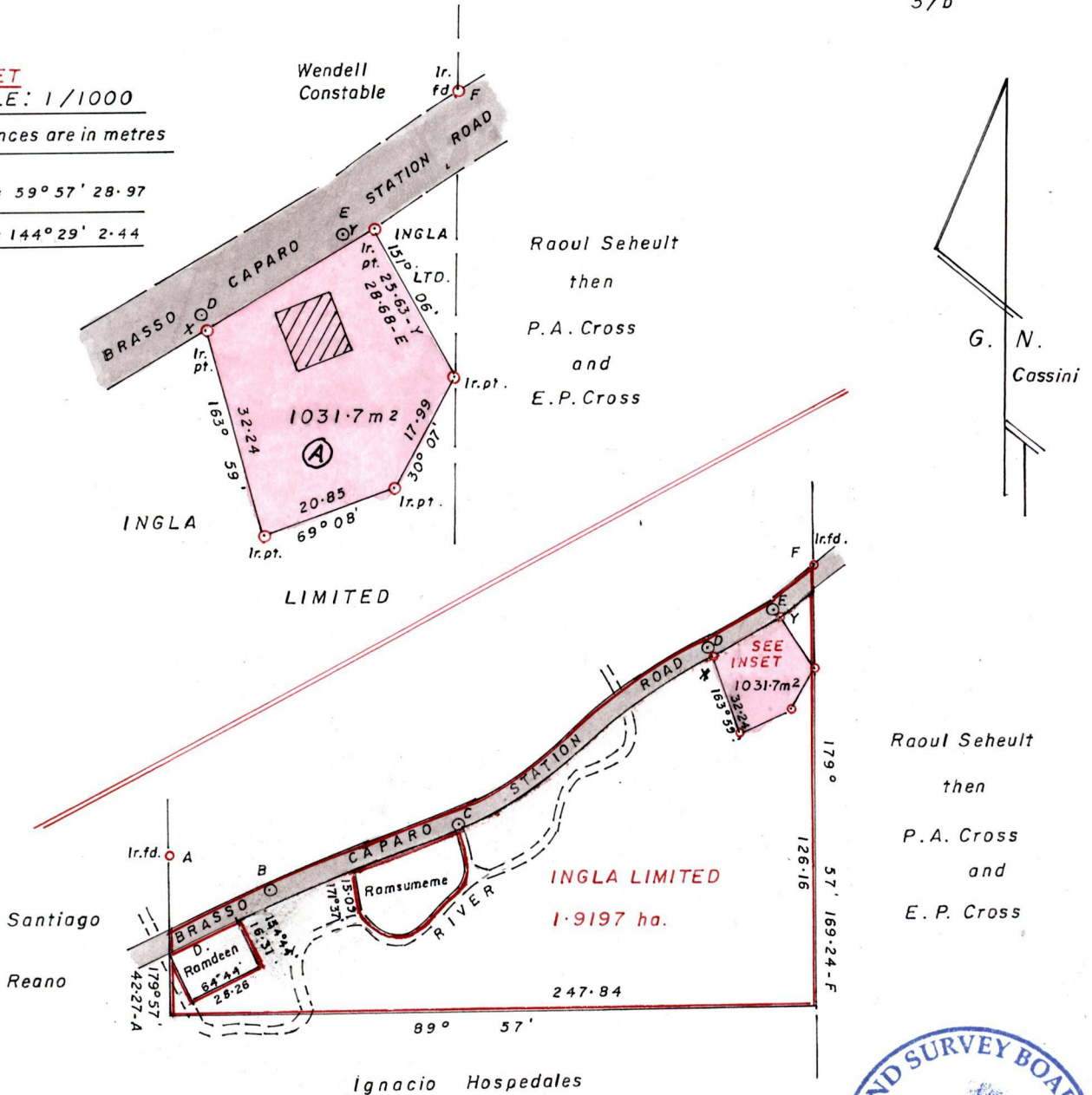


Vol. 5218 Fol. 285  
R.P.O. Vol. 1 Fol. 201  
C.T. Vol. 4844 Fol. 477

Ward of Montserrat  
County of Caroni  
Cadastral Sheet D-14-M.  $\frac{44B}{3/b}$

INSET  
SCALE: 1/1000  
Distances are in metres  
 $X-Y = 59^{\circ} 57' 28.97$   
 $D-X = 144^{\circ} 29' 2.44$



Approved  
*[Signature]*  
Director of Surveys  
2009.8.7

cf: L&S. Bk.1002 fol. 179  
Bk.1002 fol. 160

SCALE : 1 / 2500

Note: To obtain compass bearings <sup>add</sup> ~~subtract~~ 3 minutes.

Distances are in metres

PLAN of a Parcel of land coloured pink in the Ward of Montserrat  
Containing one thousand and thirty one point seven square metres  
Surveyed by me with due authority in June 2004.

In accordance with Reg 25(1) of the Land Surveyors' Regulations 1998,  
I certify that this plan is correct.

Checked by *[Signature]* *[Signature]* TTLS.  
Entered..... Trinidad & Tobago Land Surveyor. 30<sup>th</sup> Dec 2008

CT. VOL. 5218 Fol. 285 - HENRY SYLVESTER



NOW 1439/8  
7500/133