

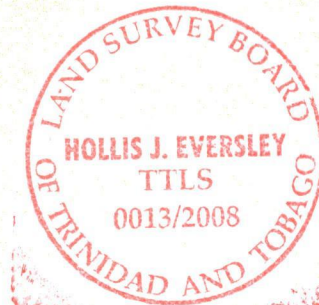
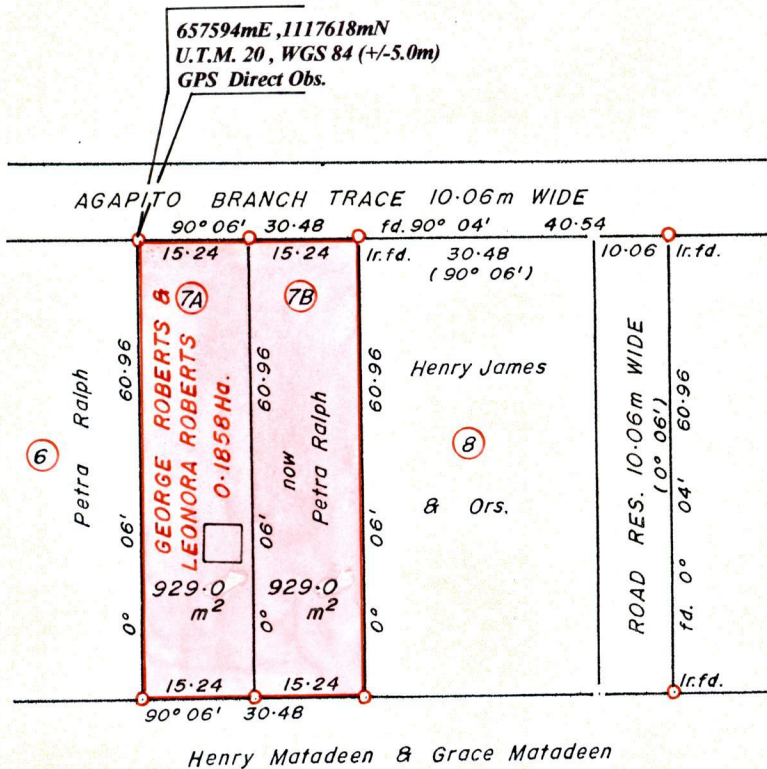
1439

67

R.P.O Vol. 1042
C.T. Vol 1042
C.T. Vol 5266

Fol. 21
Fol. 31
Fol 451

Ward of Erin
County of St. Patrick.
Cadastral Sheet G.16.K. 72C, 73A
4/d 2/c



Bk. 843 : 129.
Bk. 944 : 30.

SCALE 1 : 1000.

Distances are in METRES

⊙ Denotes Iron Put except otherwise stated

Bearings are Cassini Grid based on Solar Observations.

Approved.....
Director of Surveys.
2009.10.13

PLAN of 2 Parcels of land coloured in PINK in the Ward of Erin.
Containing together one thousand eight hundred and fifty eight point zero square metres.
Surveyed by me, with due authority, in May 2008.
In accordance with Reg. 25(1) of the Land Surveyors' Regulations 1998,
I certify that this plan is correct.

Checked by MUM 12/10/09.....

Entered Hollis J. Eversley Trinidad and Tobago Land Surveyor 2008.

LOT #	C.T. VOL & FOLIO	NAMES.
7A	5415 Fol 221	Gabriel Anthony Jason Stephanson.
7B	5266 Fol 457	Arlene Cindy Thomas.
8		



1333/11

now 1439/67
1333/11