

1439

583

REMAINING PORTION

R.P.O. Vol. 149 Fol. 327

C.T. Vol. 2601 Fol. 145

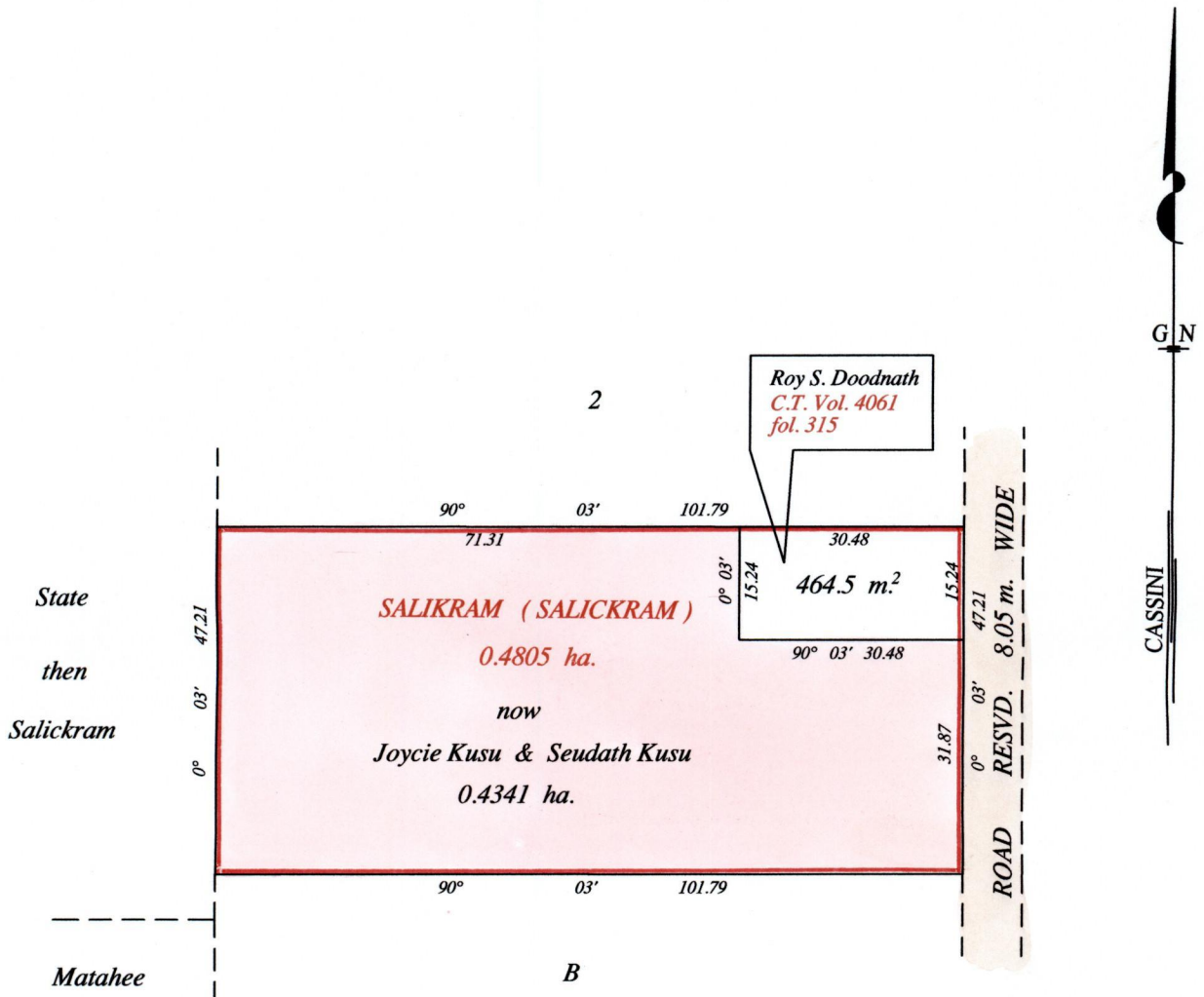
Vol. 5267 Fol. 437

Ward of Siparia

County of St. Patrick

Cadastral Sheet (G.13 E.) 63.E.

2/d



Bk. 1117 fol. 96
Bk. 1247 fol. 134

Approved *[Signature]*
7 Director of Surveys 2010-7-5

SCALE : 1:1000

Note: Bearings are cassini grid based on solar observations Distances are in metres
This is a true copy of a diagram of zero point four eight zero five hectares, originally transferred to SALIKRAM (SALICKRAM), shewing a portion coloured pink and containing zero point four three four one hectares being the remainder after one (1) previous transfer of another portion of the land.
In accordance with Regulation 25 (1) of the Land Surveyors' Regulations 1998, I certify that this plan is correct.

Checked by *[Signature]*

Entered on Trinidad & Tobago Land Surveyor *[Signature]* 2010