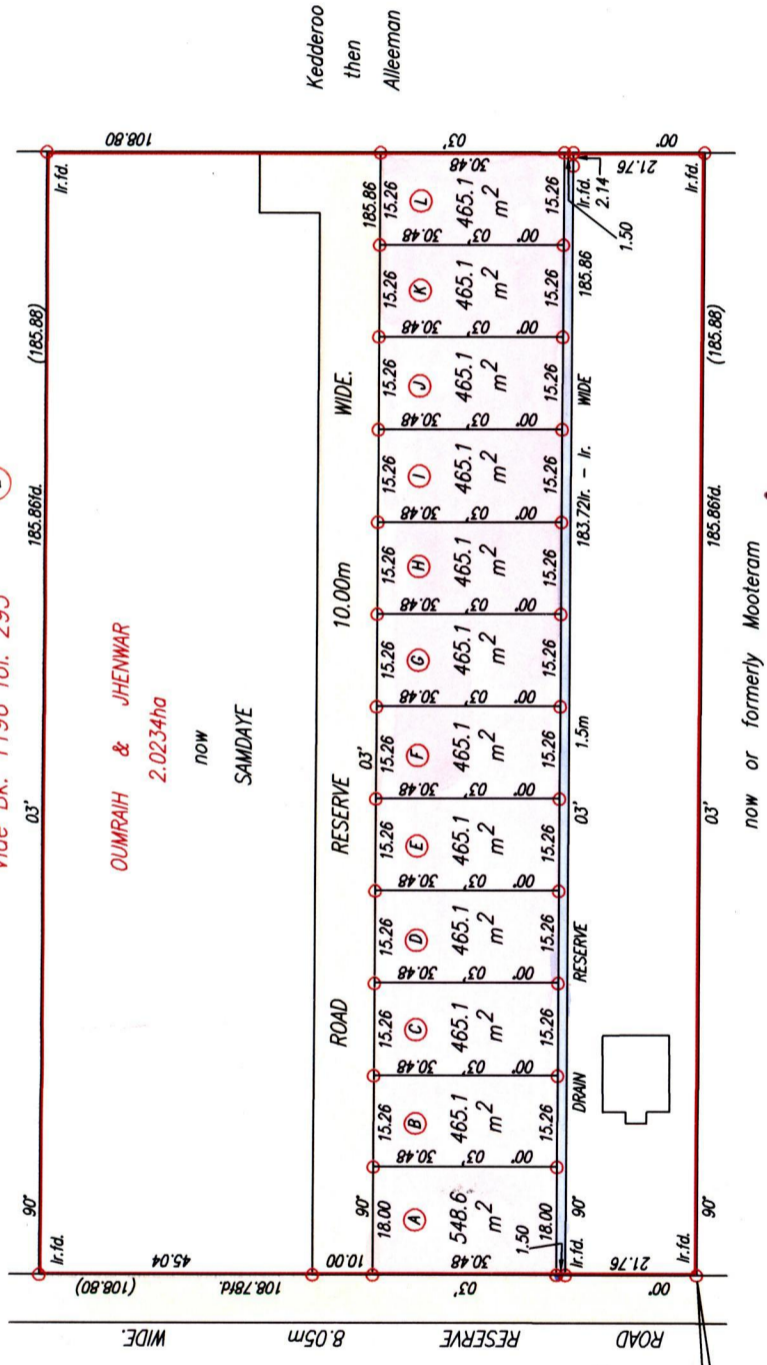
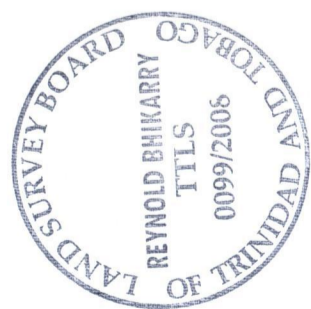


R.P.O. Vol. 81 Fol. 525
 C.T. Vol. 1668 Fol. 389
 Vide Bk. 390 fol. 101
 Vide Bk. 1256 fol. 147
 C.T. Vol. 5267 fol. 1167

Rodgewania then Balkaran Ramdass & Drs.
 Vide Bk. 1196 fol. 293

Cadastral Sheet G.13.I. $\frac{63E}{47d}$
 Ward of Siparia
 County of St. Patrick
Penal



667990mE, 1124610mN
 (U.T.M. 20, Naparima (+/-10m))

Approved *[Signature]*
 Director of Surveys 2009.12.14

PLAN of 12 Parcels of land coloured pink in the Ward of Siparia
 Containing together five thousand, six hundred and sixty four point seven square metres
 Surveyed by me, with due authority, in November, 2004
 In accordance with Regulation 25 (1) of the Land Surveyors' Regulations 1998,
 I certify that this plan is correct.

Checked by *[Signature]*

Entered on. Trinidad & Tobago Land Surveyor. 15th December. . . 2008.

SCALE 1:1250
 Distances are in metres
 Coordinates Scaled from Ward Sheet
 o Denotes Iron put except otherwise stated
 Bearings are Cassini Grid based on Solar Observations

Lot #	C.T. VOL & FOL	NAMES.
A		
B		
C		
D		
E	C.T. 5355 fol 227	Parbatee Ramjeewan - Gopie & Mohan Gopie
F	C.T 5339 fol 35	Gunuss Seecharan.
G	C.T 5322 fol 501	Vishnu Persad.
H	C.T 5334 fol 431	Jameer & Seeta Hosein
I	5267 fol 173	Michelle Shereeda Mohammed.
J		
K		

