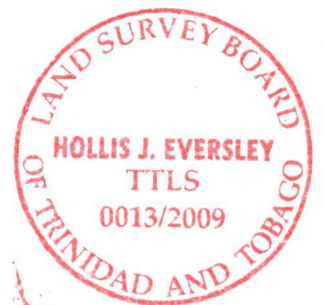
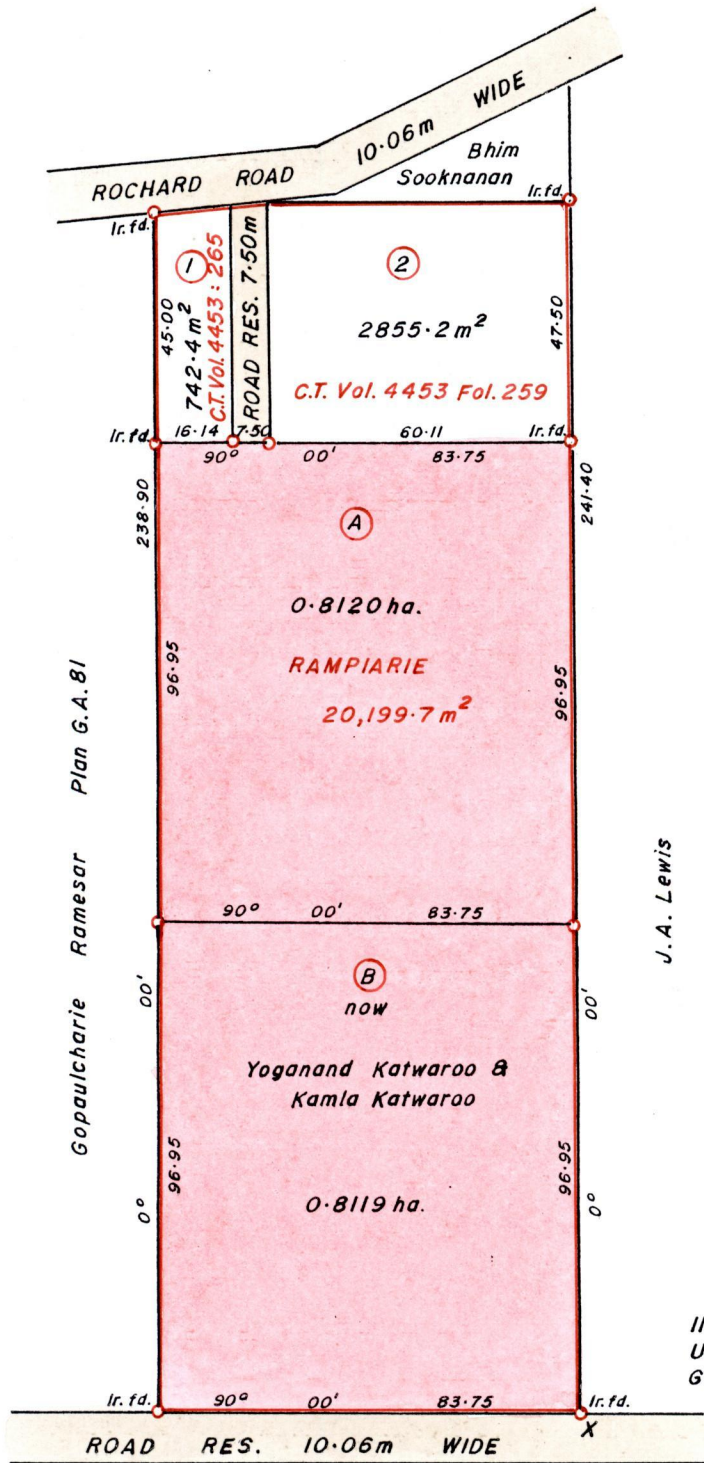


R.P.O Vol. 262 Fol. 611  
C.T. Vol. 3578 Fol. 47  
C.T. Vol. 5227 Fol. 3

Ward of Siparia.  
County of St. Patrick.  
Cadastral Sheet G.14.M. 63F ; 64D  
4/d. 3/c



J. A. Lewis

X  
1122075 mN, 674466 mE  
UTM 20, WGS 84 (±5.0m)  
GPS Handheld Direct Obs.

Bk. 1271 : 144  
Bk. 425 : 69.

SCALE 1 : 1500.

Distances are in METRES

o Denotes Iron Put except otherwise stated  
Bearings are Cassini Grid based on Solar Observations.

Approved *[Signature]*  
Director of Surveys. 2010.3.22

**PLAN of 2 Parcels of land coloured in PINK in the Ward of Siparia.**  
**Containing together one point six two three nine hectares.**  
**Surveyed by me, with due authority, in June 2008.**  
**In accordance with Reg. 25(1) of the Land Surveyors' Regulations 1998,**  
**I certify that this plan is correct.**

Checked by *[Signature]*

Entered .....

*[Signature]*  
Trinidad and Tobago Land Surveyor

Trinidad and Tobago Land Surveyor..... 2009.

KOT #	C.T. VOL. & FOLIO	NAMES.
A	5227 fol. 9	YOGANAND S KAMLA KATWAROO.
B	5227 fol. 15	YOGANAND S KAMLA KATWAROO.



NO. 1439/5  
 1333/136