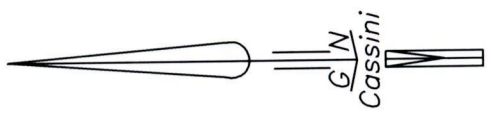


Vol. 5212 Fol. 115  
 R.P.O. Vol.190 Fol.179  
 C.T. Vol.557 Fol.389  
 See S.O. 95/07  
 Plan Q.D. 102

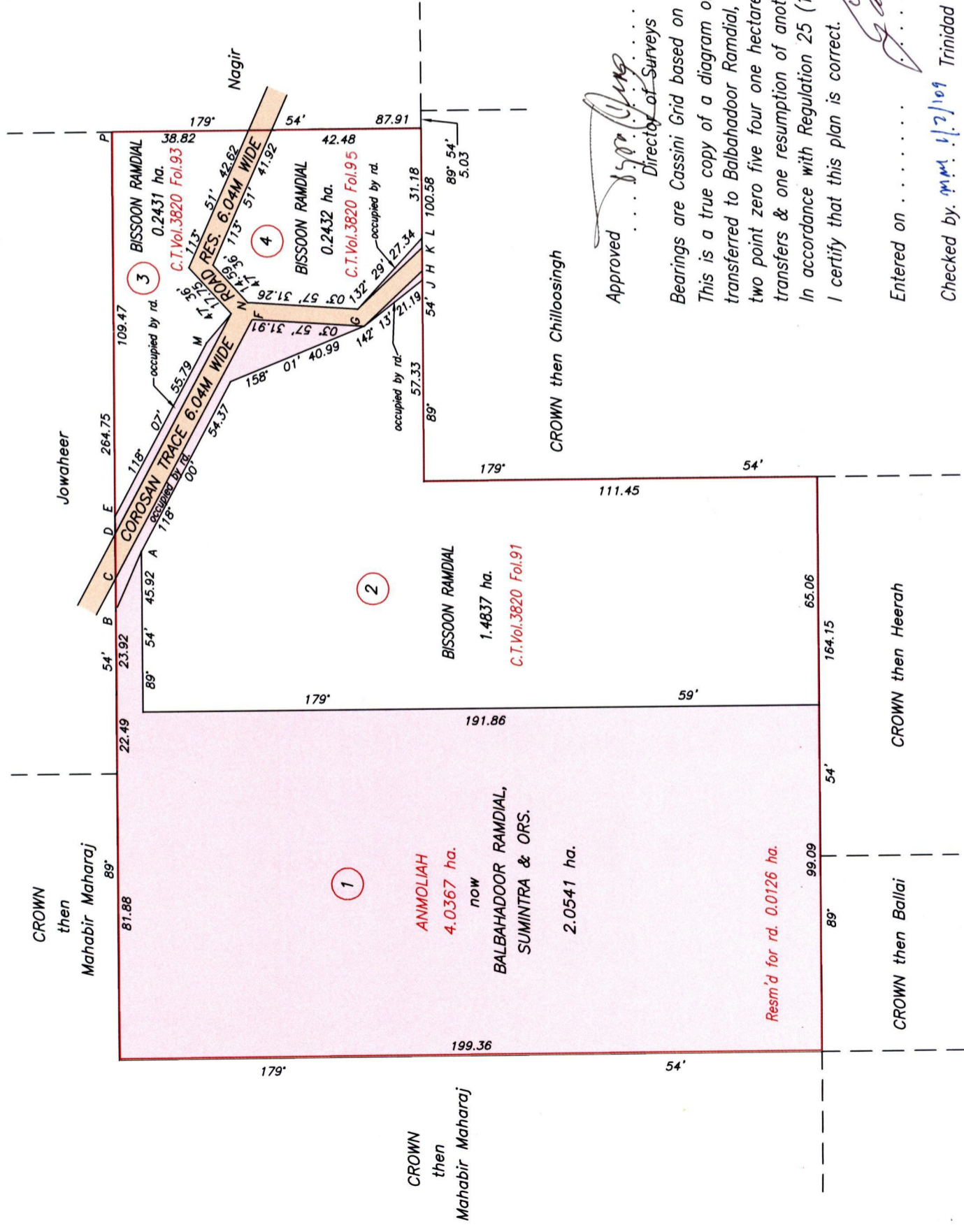
REMAINING PORTION

Cadastral Sheet H.6.A. 64C  
 2/a  
 Ward of Ortoire  
 County of Victoria  
 Bk.357 Fol.208

PLAN: GA132



1439



A - B	293°	42'	18.58
B - C	89°	54'	9.23
C - D	89°	54'	12.77
D - E	89°	54'	4.98
M - N	130°	38'	10.86
C - F	118°	07'	83.14
D - N	118°	07'	70.78
J - H	89°	54'	2.66
H - K	89°	54'	6.50
K - L	89°	54'	2.91
G - H	136°	57'	22.91
G - K	136°	57'	25.25

Co-ordinates obtained by Hand Held G.P.S.  
 (WGS84 U.T.M. Zone 20) WESHDAITH  
 Point P  
 Accuracy ± 4m  
 E 689736m  
 N 1132974m



SCALE 1/1500  
 Distances are in metres

Approved *[Signature]*  
 Director of Surveys 2009.7.7

Bearings are Cassini Grid based on Solar Observations

This is a true copy of a diagram of four point zero three six seven hectares originally transferred to Balbahadoor Ramdial, Sumintra & Ors. showing a portion coloured pink and containing two point zero five four one hectares being the remainder after three previous transfers & one resumption of another portion of the land.

In accordance with Regulation 25 (1) of the Land Surveyors' Regulations 1998, I certify that this plan is correct.

*[Signature]*  
 Entered on . . . . .

Checked by *[Signature]* 1/2/109 Trinidad & Tobago Land Surveyor . . . . . 2009

4

1500/100

CT. VOL. 5212 Fol. 115 - BALBAHADOOR RAMDIAL, SUMINTRA, SAHADARIE & DINESH DEVIN RAMJATTAN



now 1439/A  
~~1500/100~~