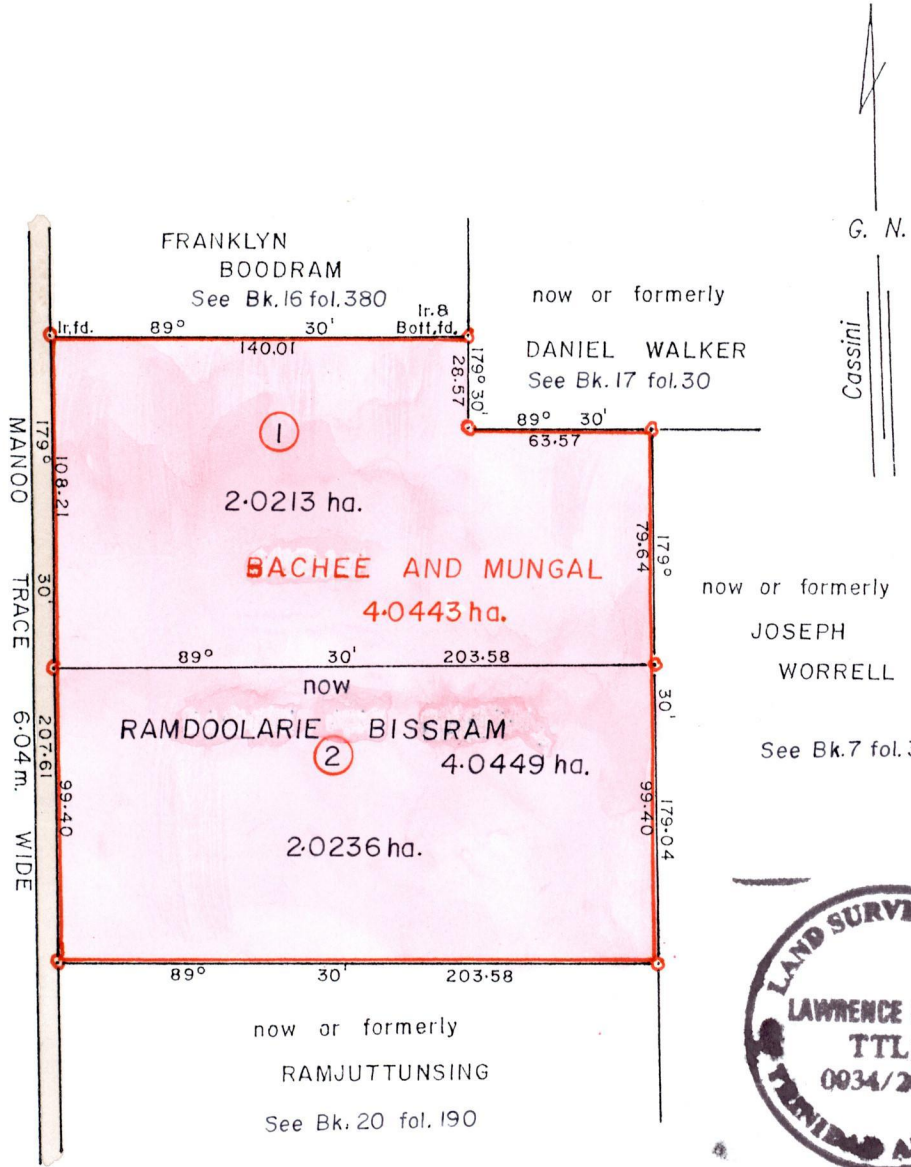


R.P.O. Vol. 110 Fol. 231
C.T. Vol. 917 Fol. 545

Cadastral Sheet E.I.O. 35B/2/c
Ward of Tamana
County of St. Andrew

VOL. 5186 FOL. 483

See Bk.17 fol. 333



Approved *[Signature]*
Director of Surveys 2006.3.9

SCALE 1/2500
Distances are in metres

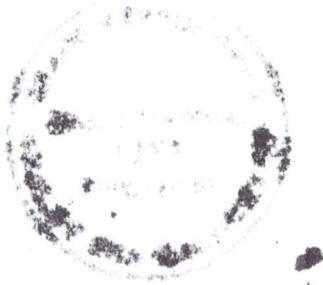
• Denotes Iron put except where otherwise stated.
Bearings are based on Solar Observations.

PLAN of 2 Parcels of land coloured pink in the Ward of Tamana
Containing altogether four point zero four four nine hectares.
Surveyed by me, with due authority, in December 2003 for
In accordance with Regulation 25 (1) of the Land Surveyors' Regulations 1998,
I certify that this plan is correct.

Checked by *[Signature]*
Entered *[Signature]*
Trinidad & Tobago Land Surveyor. 15th December. . . . 2003.

1. CT. VOL. 5269 Fol. 159 - NALINEE & CHRISSTON BISSRAM

2. CT. VOL. 5186 Fol. 493 - DEODATH, ARMILLA & BRAMOLSTAR & ORS.



1439/28
1358/27