

VOL 5427 FOL 163

R.P.O. Vol. 191

Fol. 451

C.T. Vol. 2540

Fol. 187

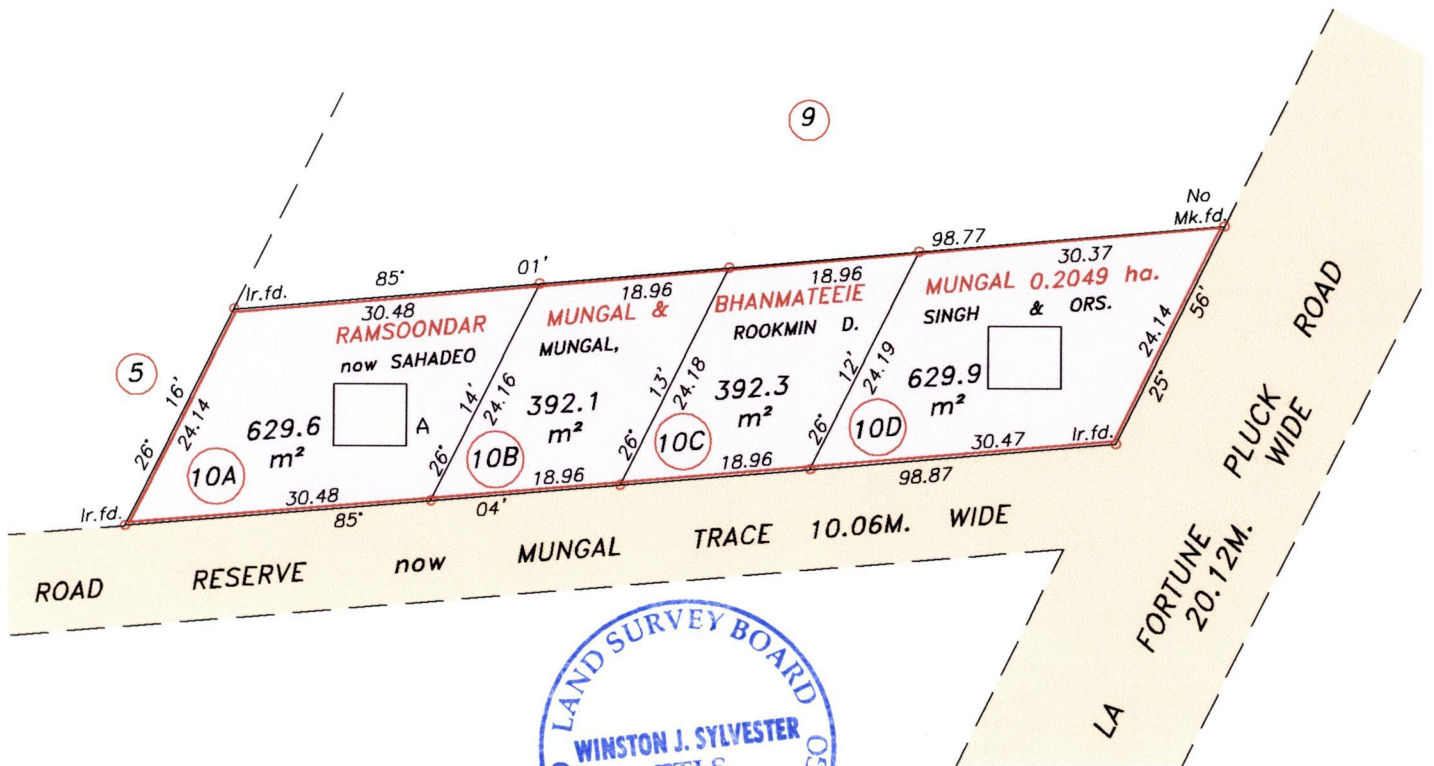
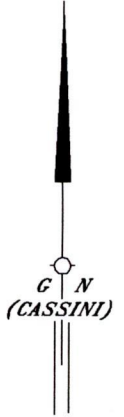
U.P.R.N No.

Ward of Naparima

County of Victoria

Cadastral Sheet G.7. P.

63.B.  
3/d



A= N. 1,129,377  
E. 666,051

Bk.110 Fol.222

Note: Coordinates obtained by hand held G.P.S.  
W.G.S. 84 UTM Zone 20(+/-)5m

Approved *[Signature]*  
Director of Surveys  
2007-1-13

SCALE 1/750

Distances are in metres

Bearings are Cassini Grid based on Solar Observations  
Plan of 4 Parcels of land coloured pink in the Ward of Naparima  
Containing together two thousand and forty three point nine square metres  
Surveyed by me, with due authority, in February 2006  
In accordance with Regulation 25 (1) of the Land Surveyors' Regulations 1998,  
I certify that this plan is correct.

Checked by *[Signature]*

*[Signature]*

Entered by .....

Trinidad & Tobago Land Surveyor.....12-12-2008.

LOT NO.	CT VOL 3 FOL	NAMES
10A	5427 FOL 171	ROCKMUN D. SINGH
10D	5427 FOL 179	SAHADEO MUNCIAL



now 1439/204  
42/1/72