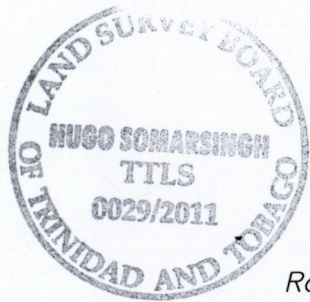


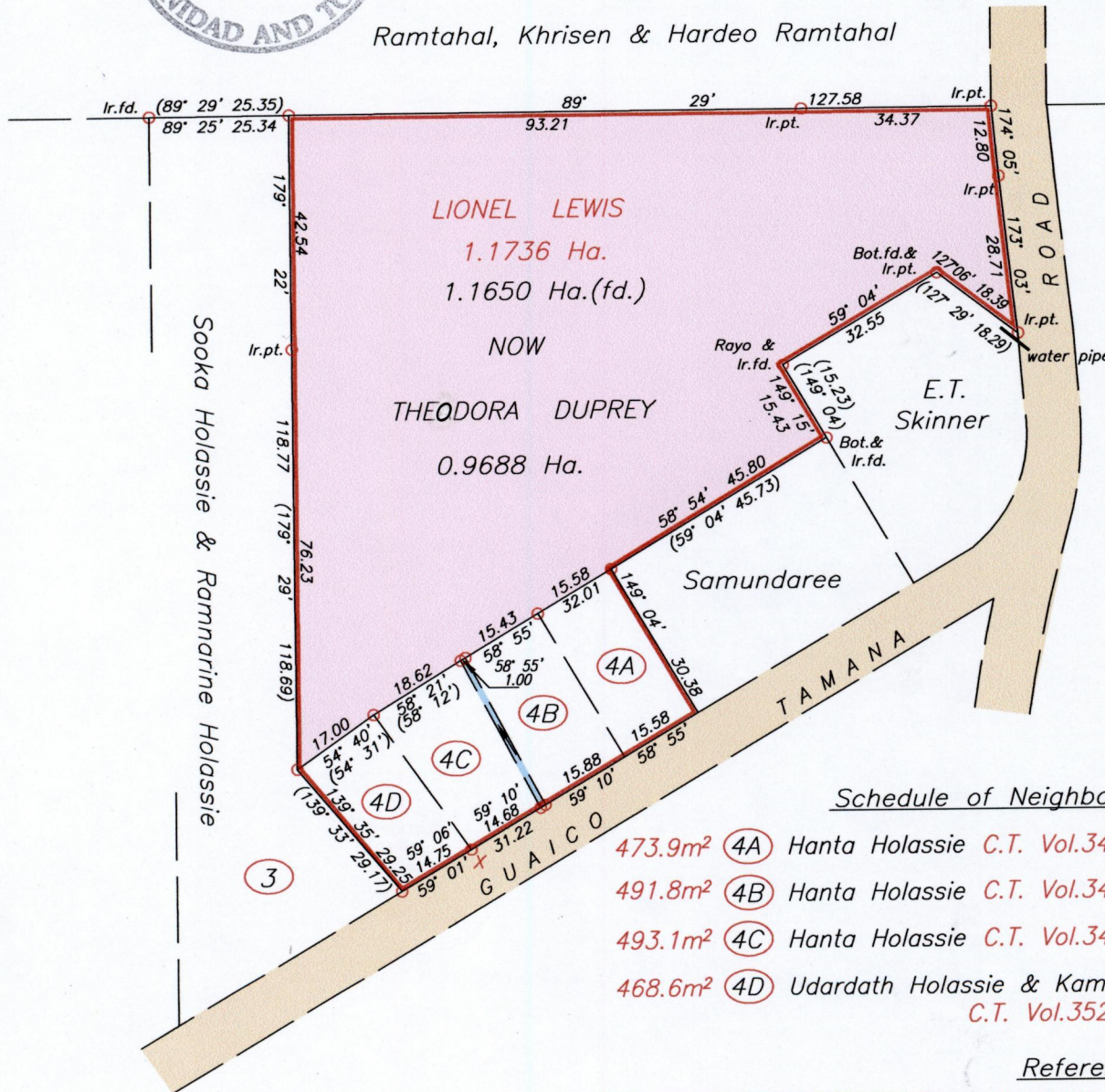
Vol. 5361 Fol. 397
R.P.O. Vol. 66 Fol. 33
C.T. Vol. 3263 Fol. 371

25E
Cadastral Sheet 2/d (E.1.D.)
Ward of Tamana
County of St. Andrew



Leon Lamy
now

Ramtahal, Khrisen & Hardeo Ramtahal



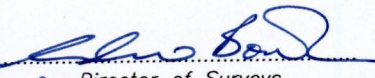
Schedule of Neighbours

- 473.9m² 4A Hanta Holassie C.T. Vol.3492 Fol.43
- 491.8m² 4B Hanta Holassie C.T. Vol.3492 Fol.41
- 493.1m² 4C Hanta Holassie C.T. Vol.3492 Fol.39
- 468.6m² 4D Udardath Holassie & Kamla Singh C.T. Vol.3522 Fol.393

References

X = N 1170102 +/- 3.0m
E 701880
UTM 20 WGS 84
Hand Held GPS

- Bk. 1200 Fol.85
- Bk. 753 Fol.61
- Bk. 830^A Fol.47
- Bk. 12 Fol.191

Approved 
Director of Surveys
2011.2.25

SCALE 1:1250

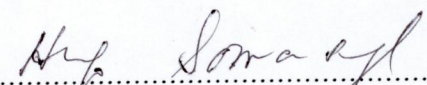
Distances are in METRES

- o Denotes Iron found unless otherwise stated
- Bearings are based on Solar observations

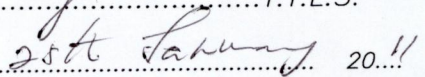
PLAN of a Parcel of land coloured pink in the Ward of Tamana
Containing zero point nine six eight eight hectares
Surveyed by me, with due authority, on July 26th 2010

In accordance with Regulation 25 (1) of the Land Surveyors' Regulations 1998,
I certify that this Plan is correct.

Checked by  22/2/2011

 T.T.L.S.

Entered on

Trinidad & Tobago Land Surveyor  2011