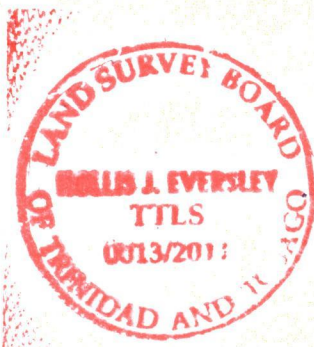
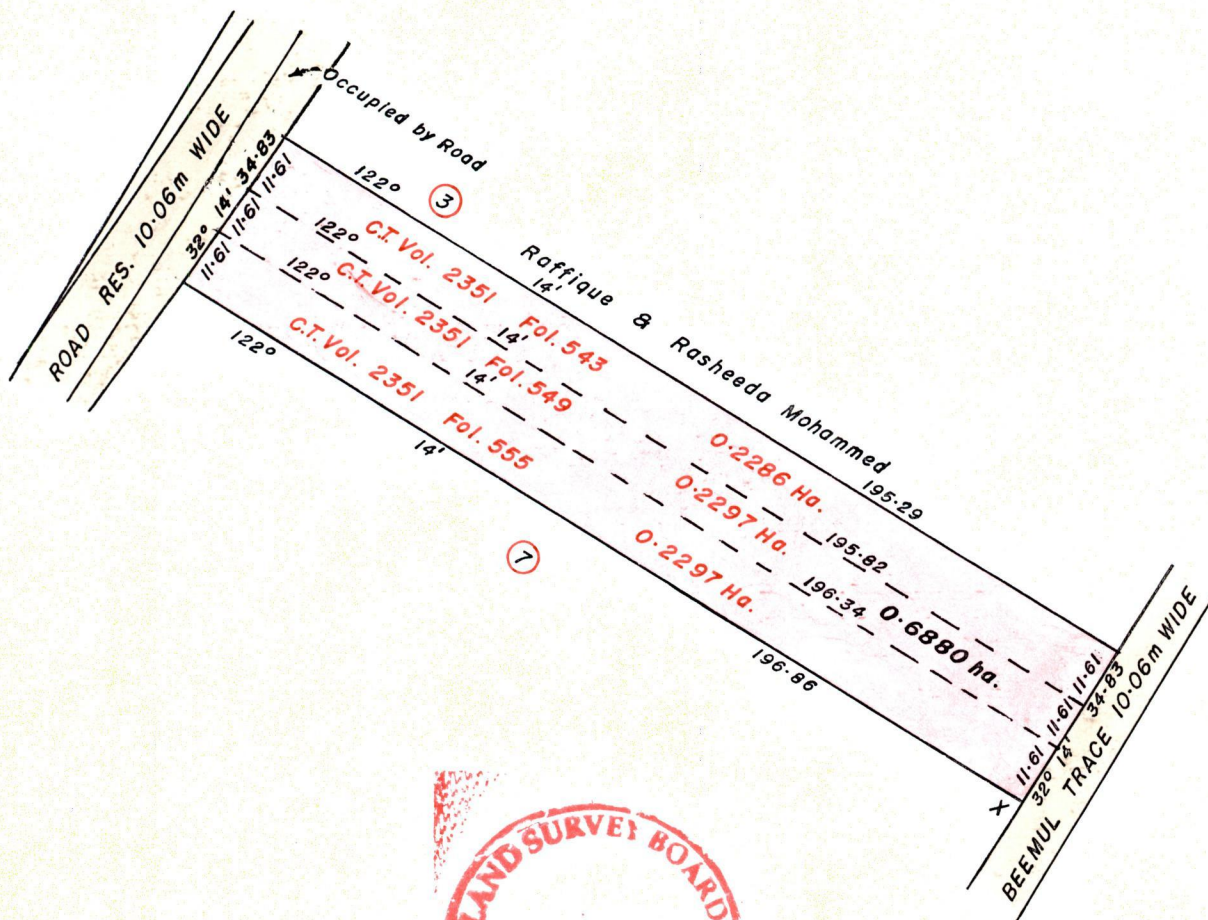
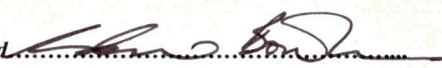


" TO BE CONSOLIDATED "

665760 mE, 1124692 mN.
 X- U.T.M. 20, WGS 84 (+/- 5.0m)
 GPS Handheld Direct Obs.

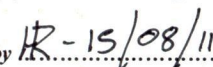


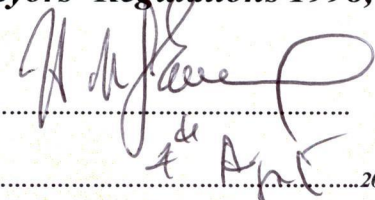
Bk. 988 : 4.
SCALE 1:1500.

Approved 
 Director of Surveys. 2011.8.16

Distances are in METRES
 o Denotes Iron Put except otherwise stated
 Bearings are Cassini Grid based on Solar Observations.

PLAN of 3 Parcels of land coloured in PINK in the Ward of Siparia.
Containing together zero point six eight eight zero hectare.
Prepared by me, with due authority, in November 2010, for Fyzul Ghany.
In accordance with Reg. 25(1) of the Land Surveyors' Regulations 1998,
I certify that this plan is correct.

Checked by  - 15/08/11


 Land Surveyor

Entered Trinidad and Tobago Land Surveyor 2011.

Original Bh. 988: 4

Ct. Vol. 5399 Fol. 155 - Isha Ousman & Fyzul Ghany



Now 1A39/220
1316/57