

468

RPO. 21- 2008/312

Cadastral Sheet C.9.D 6F
2/b

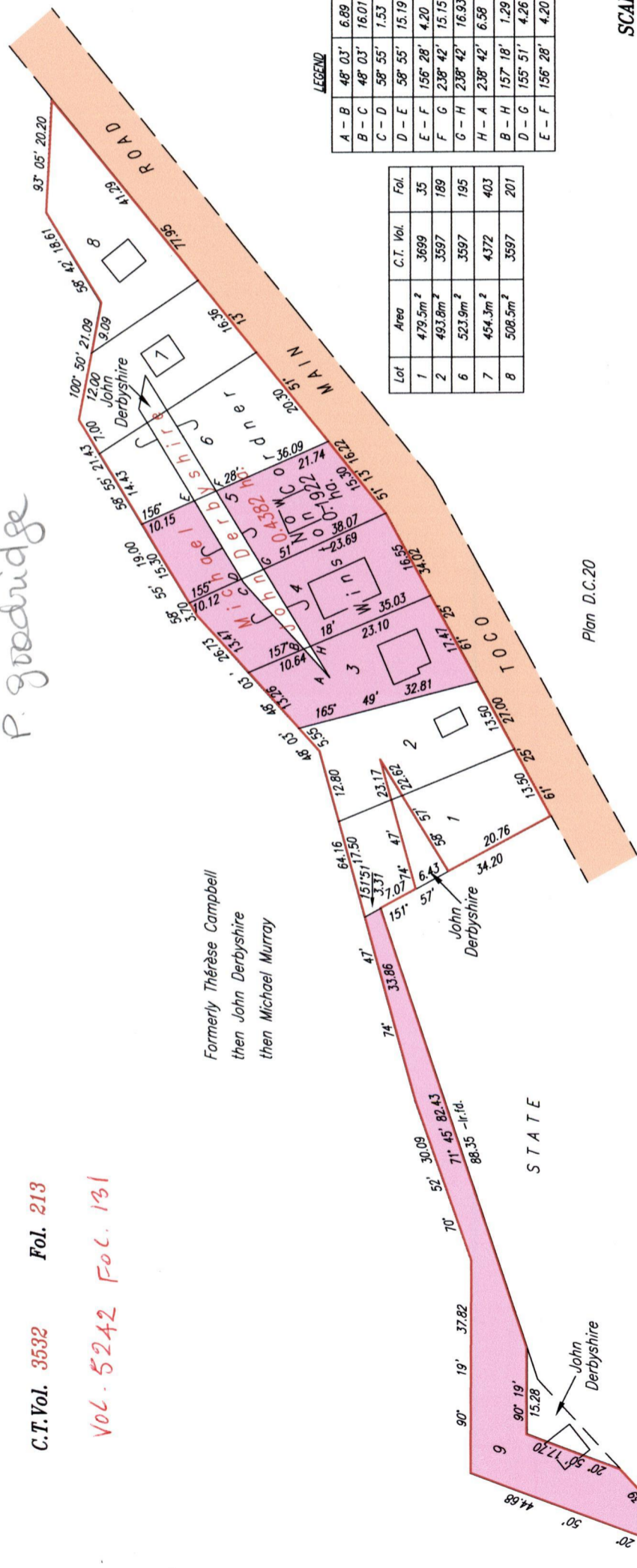
REMAINING PORTION PLAN

P. Goodridge

Ward of Toco
County of St. David

C.T. Vol. 3532 Fol. 213

Vol. 5242 Fol. 131



LEGEND

A - B	48' 03"	6.89
B - C	48' 03"	16.01
C - D	58' 55"	1.53
D - E	58' 55"	15.19
E - F	156' 28"	4.20
F - G	238' 42"	15.15
G - H	238' 42"	16.93
H - A	238' 42"	6.58
B - H	157' 18"	1.29
D - G	155' 51"	4.26
E - F	156' 28"	4.20

Lot	Area	C.T. Vol.	Fol.
1	479.5m ²	3699	35
2	493.8m ²	3597	189
6	523.9m ²	3597	195
7	454.3m ²	4372	403
8	508.5m ²	3597	201

SCALE 1:1000
Distances are in METRES



Plan D.C.20

Approved ... *[Signature]* Director of Surveys
2009.9.9

This is a true copy of a diagram of point four three eight two hectare originally transferred to Michael John Derbyshire showing a portion coloured pink and containing zero point one nine two two hectare being the remainder after five previous transfers of other portions of the land in accordance with Regulation 25 (1) of The Land Surveyors' Regulations 1998,

I certify that this plan is correct.
Checked by ... *[Signature]* ... TTLS

Entered on ...
Trinidad & Tobago Land Surveyor
C:\LESS 2008\TRINIDAD\JEANVILLE\JOHN\DWG FILE NO. J041
... TTLS
... 2009

1439

210