

Vol. 5438 Fol. 513

C.T. Vol. 3012 Fol. 79

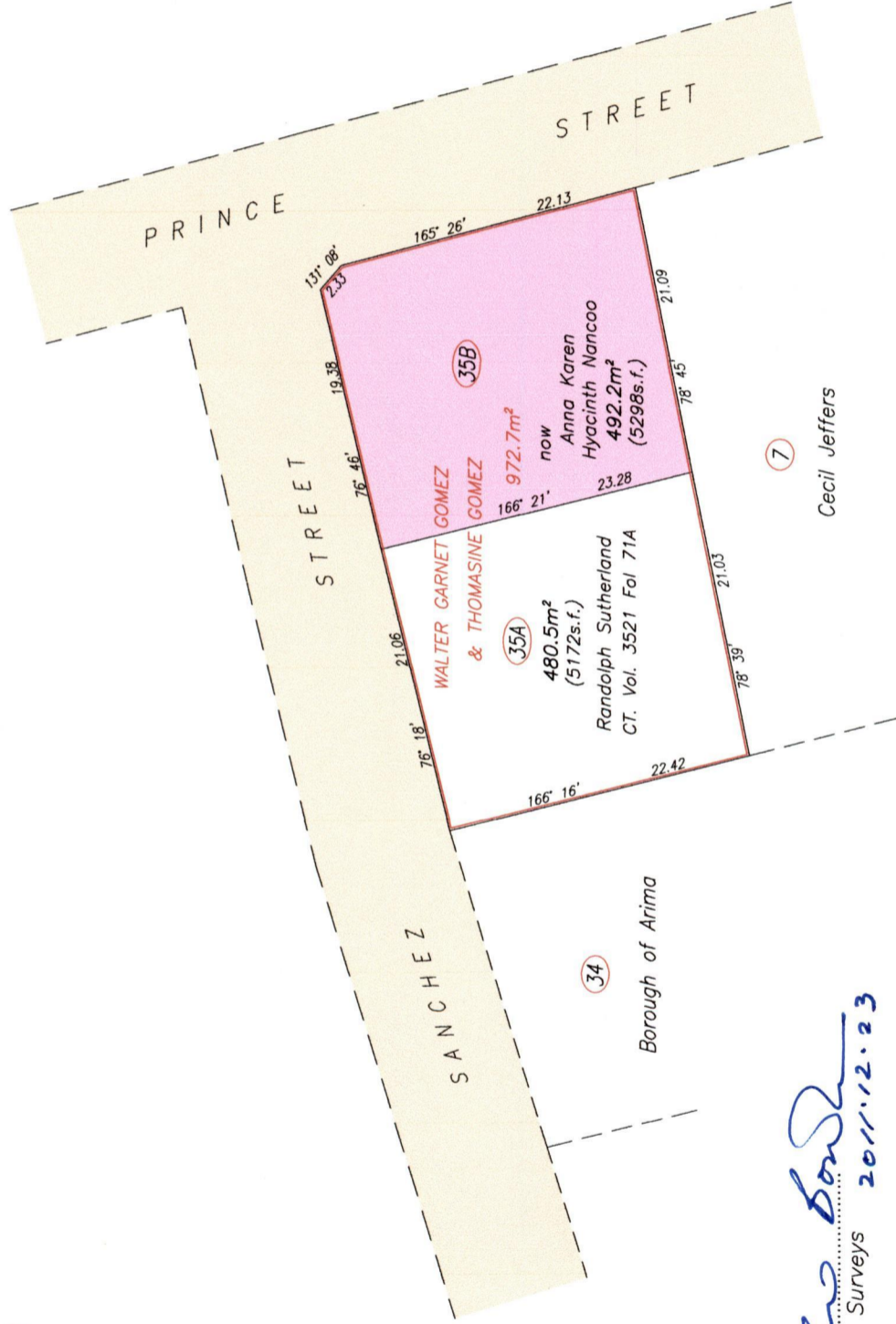
Remaining Portion Plan

Cadastral Sheet B.19.P 24C
1/b

Borough of Arima

County of St. George

Sanchez Street, Arima



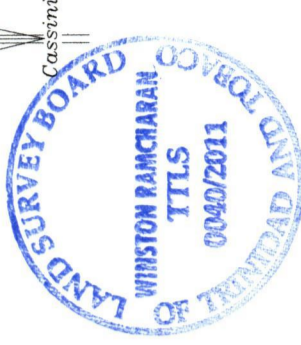
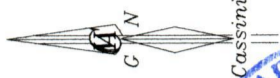
Approved: *[Signature]*
Director of Surveys 2011.12.23

Bearings are Cassini Grid based on Solar Observations

This is a true copy of a diagram of nine seven two point seven square metres originally transferred to Walter Garnet Gomez & Thomasine Gomez showing a portion coloured pink and containing four nine two point two square metres being the remainder after (1) one previous transfer and of other portions of the land. In accordance with Regulation 25 (1) of the Land Surveyors' Regulations 1998, I certify that this plan is correct.

SCALE 1/500

Distances are in metres



[Signature]

Trinidad & Tobago Land Surveyor... 14th December 2011

Checked by *[Signature]* Entered on

1439

2008