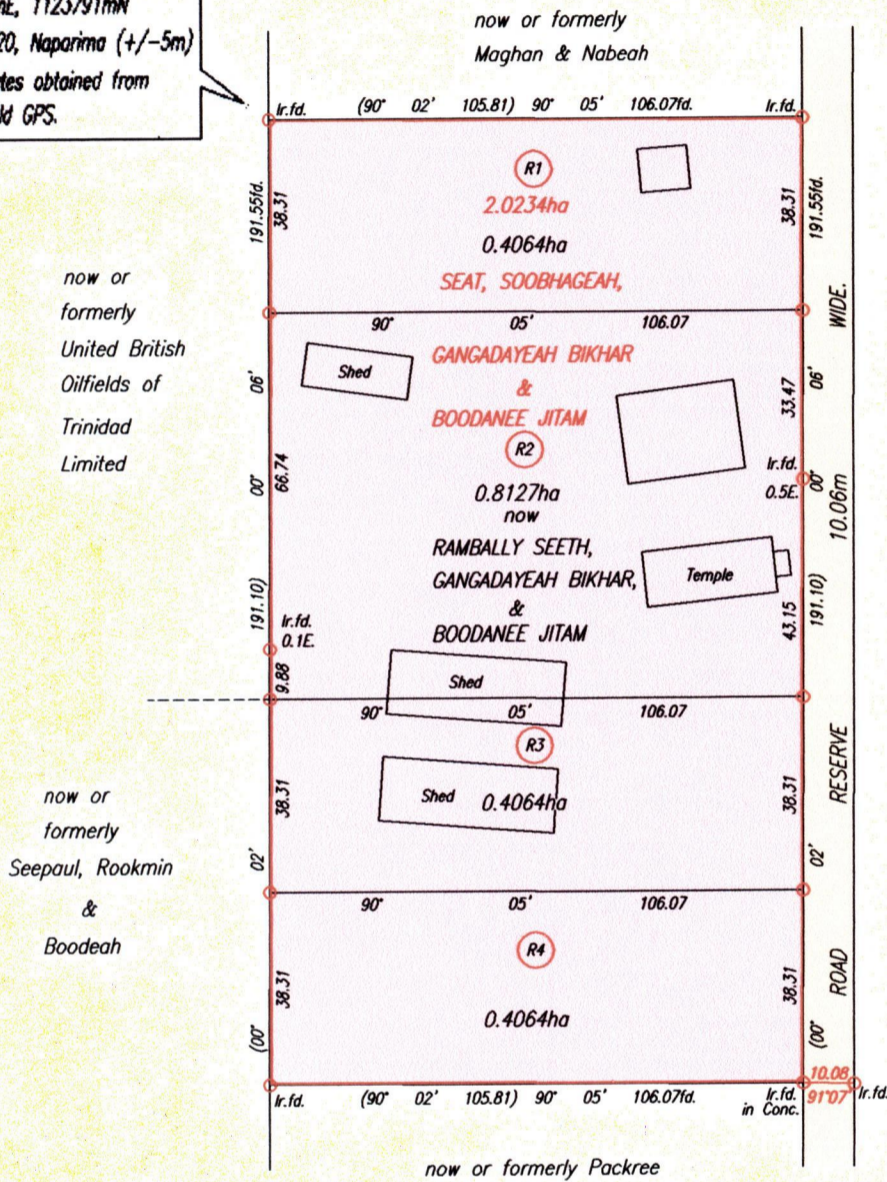


Vol. 5443 Fol. 349  
R.P.O. Vol. 201 Fol. 347  
C.T. Vol. 1428 Fol. 7

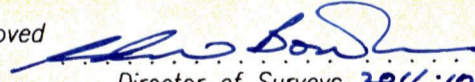
Cadastral Sheet G.13.K. 63F  
Ward of Siparia. 3/b  
County of St.Patrick.  
Naipalia Branch Trace,  
Penal.

Ref. : Bk. 408 fol. 349

671470mE, 1123791mN  
(U.T.M. 20, Naparima (+/-5m))  
Coordinates obtained from  
hand held GPS.

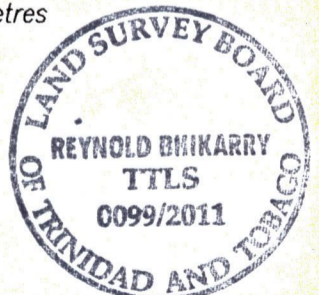


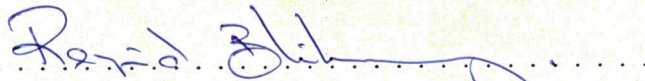
Cassini  
G | N

Approved   
Director of Surveys 2011.10.11

SCALE 1:1500  
Distances are in Metres

○ Denotes Iron put except otherwise stated.  
Bearings are Cassini Grid based on Solar Observations.  
PLAN of 4 Parcels of land coloured pink in the Ward of Siparia  
Containing together two point zero three one nine hectares.  
Surveyed by me, with due authority, in August, 2010  
In accordance with Regulation 25(1) of the Land Surveyors' Regulations 1998,  
I certify that this plan is correct.



Checked by  21/9/2011

Entered . . . . . Trinidad & Tobago Land Surveyor . 13th July . . . . . 2011

Lot. No.	CT. VOL. & FOL.	NAMES
R1	5443 FOL. 357	LISA SEETH RAMKHELAWAN & HEMRAS RAMKHELAWAN.
R2	5443 FOL. 373	RAMBALLY & MEENA SEETH
R3	5443 FOL. 381	MELISSA VIJAYA SEETH & ADESH SEETH
RA	5443 FOL. 365	RESHMA BASHTI SEETH - SIEDNARINE & SUNIL SIEDNARINE



now 1A39/207  
1345/A