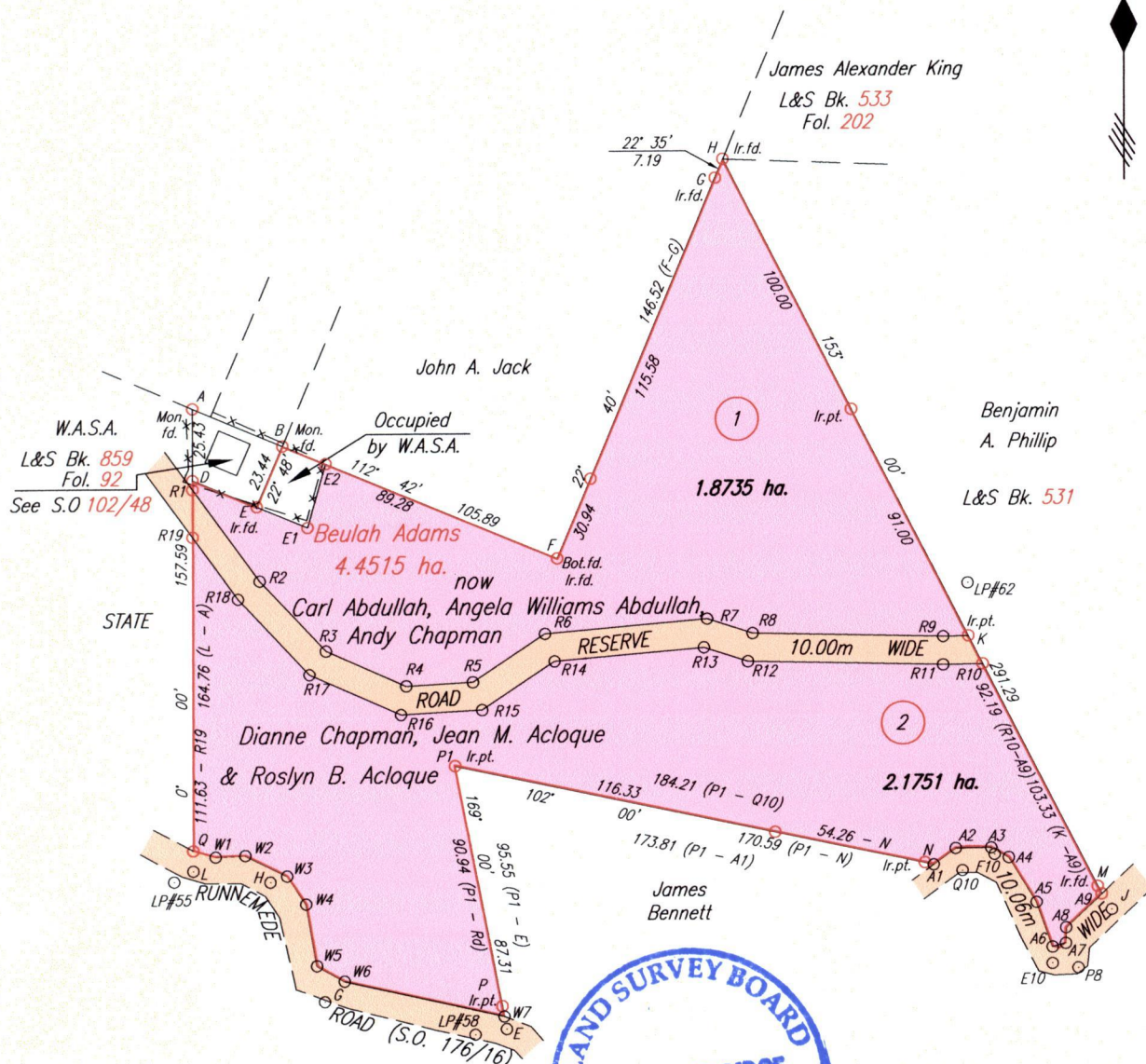


RUNNEMEDE



Coordinates of H (Ir.fd.): 0750235mE, 1245194mN
U.T.M. 20 Naparima (+/- 5.00m)
G.P.S. Direct Observation



Approved: *[Signature]*
Director of Surveys 2010.12.31

Original Survey Plan in L&S Bk. 532 Fol. 249

- Denotes Peg put
- Denotes Iron put except where otherwise stated

SCALE 1: 2500

Distances are in METRES

Bearings are Cassini Grid based on Solar Observations

PLAN of 2 Parcels of land coloured pink in the Ward of Tobago

Containing together four point zero four eight six hectares

Surveyed by me, with due authority, in December 2008

In accordance with Regulation 25 (1) of The Land Surveyors' Regulations 1998,

I certify that this plan is correct.

Checked by *[Signature]*

[Signature] TTLS

Entered on

Trinidad & Tobago Land Surveyor *[Signature]* 2010

Lot. 1

Lot. 2 CT. VOL. 5422 Fol. 269 - DONALD MIGGINS

From	To	Bearing	Distance
R1 - D		0° 00'	3.29
D - E		112° 48'	24.66
E - E1		112° 48'	19.60
E1 - E2		15° 41'	23.71
R1 - R2		144° 12'	40.67
R2 - R3		136° 44'	34.23
R3 - R4		113° 41'	31.15
R4 - R5		86° 55'	23.78
R5 - R6		56° 32'	30.78
R6 - R7		85° 04'	57.92
R7 - R8		107° 53'	16.95
R8 - R9		91° 20'	67.62
R9 - K		89° 08'	8.89

From	To	Bearing	Distance
R19 - R18		144° 12'	27.45
R18 - R17		136° 44'	36.92
R17 - R16		113° 41'	35.56
R16 - R15		86° 55'	28.87
R15 - R14		56° 32'	30.95
R14 - R13		85° 04'	53.36
R13 - R12		107° 53'	16.39
R12 - R11		91° 20'	69.26
R11 - R10		89° 08'	13.99
K - LP#62		359° 09'	18.87
Q - LP#55		211° 23'	13.06
P - LP#58		223° 49'	13.86
L - H		98° 27'	27.64
H - G		155° 40'	46.83
G - E		98° 49'	66.55
J - P8		209° 45'	23.89
P8 - E10		280° 11'	9.25
E10 - F10		332° 22'	44.04
F10 - Q10		243° 19'	12.67

From	To	Bearing	Distance
Q - W1		106° 18'	8.24
W1 - W2		87° 24'	10.54
W2 - W3		116° 33'	16.59
W3 - W4		146° 18'	12.08
W4 - W5		170° 08'	22.34
W5 - W6		119° 17'	11.25
W6 - W7		102° 33'	58.21
A1 - A2		53° 26'	9.65
A2 - A3		89° 13'	12.54
A3 - A4		119° 44'	7.17
A4 - A5		148° 33'	18.76
A5 - A6		160° 36'	16.97
A6 - A7		74° 35'	4.81
A7 - A8		1° 31'	5.55
A8 - A9		46° 26'	17.37



now 1439/204
1376/4