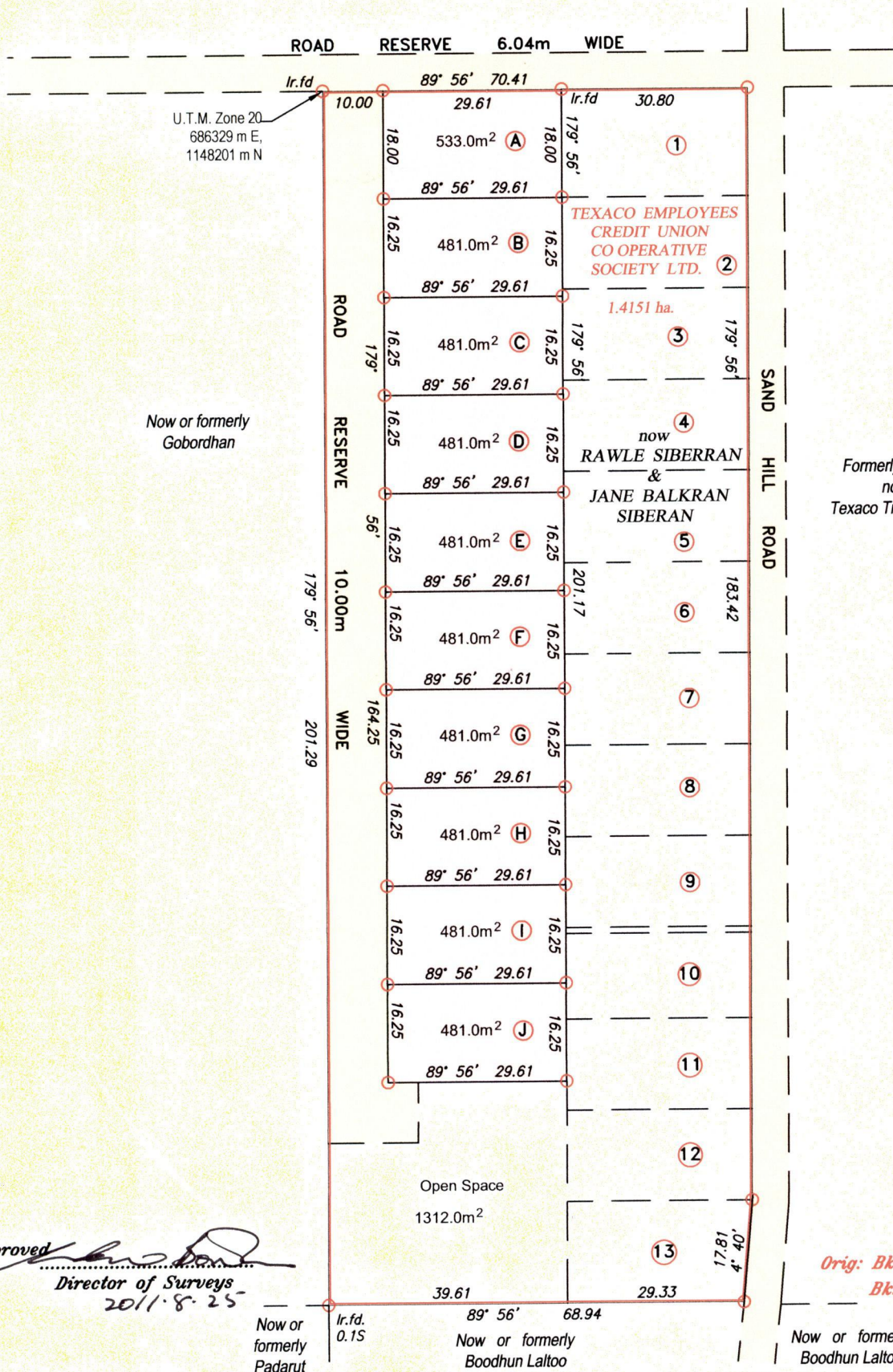



1439

2013



Approved 
 Director of Surveys
 20/11/08

Orig: Bk. 253 fol 160
 Bk.1117 fol 101

Coordinate obtained by hand held
 GPS +/- 5.0m

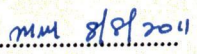
○ Denotes Iron put except stated otherwise.

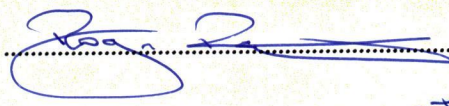
SCALE 1:1500

Bearings are Cassini Grid based on Solar Observations

Distances are in metres

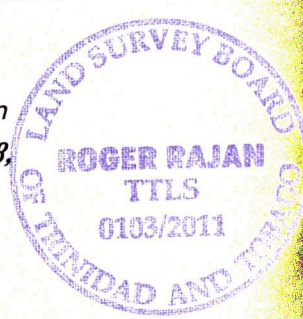
Plan of ten (10) Parcels of land coloured pink in the Ward of Montserrat
 Containing together four thousand eight hundred and sixty two square metres
 Surveyed by me, with due authority, in March, 2009 at the request of Rawle Siberan
 In accordance with Regulation 25 (1) of the Land Surveyors' Regulations 1998,
 I certify that this plan is correct.

Checked by  8/8/2011



Entered by

Trinidad & Tobago Land Surveyor  29th June 2011



LOT NO.	CT. VOL. & FOLIO	NAMES
A	5451 fol 151	Oriel Baptiste
B	5490 fol. 469	QUINCY ADRIAN BRIAN BAPTISTE
C		
D		
E	5483 fol 529	Veji & Wendy Bachan.
F		
G		
H	CT. VOL. 5385 FOL. 81	ONTHAR & MEERA RAMKISSOON
I		
I		



now 1439/203
1376/178