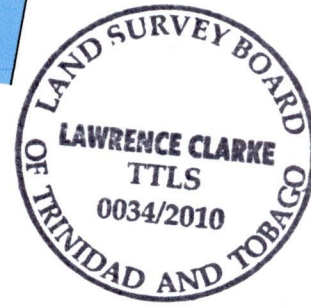
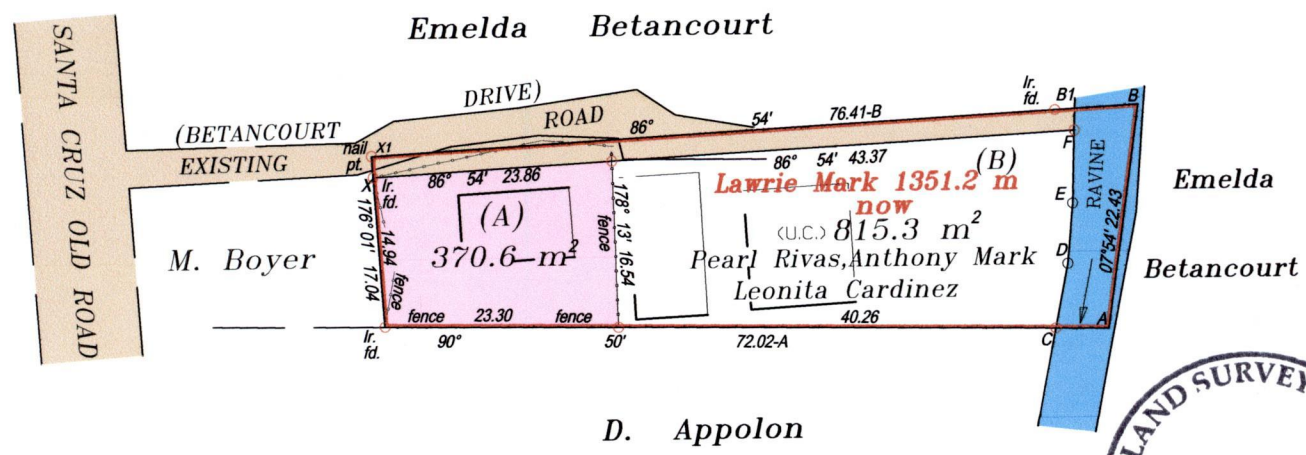
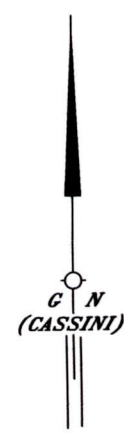


R.P.O. Vol. Fol.
C.T. Vol. 1681 Fol. 213
C.T. Vol. 5344 Fol. 335

Ward of St. Anns.
County of St. George.
Cadastral Sheet B.17.E. 13F
Vide Bk.1010 fol.106 3/c
Bk.1053 (Vol.2) fol.147



C - D	10° 54'	6.56
D - E	05° 01'	6.05
E - F	01° 42'	7.19
X1-B1	86° 54'	68.14

Approved: *[Signature]*
Director of Surveys. 2011.4.21

Note : Coordinates obtained by hand held G.P.S.

X= N. 1,179,578
E. 669,662

SCALE 1/750

W.G.S.84 UTM Zone 20 (+/-) 5m
○ Denotes Iron put except otherwise stated.
Bearings are Cassini Grid based on Solar Observations Distances are in metres
Plan of a parcel of land coloured pink in the Ward of St. Anns.
Containing three hundred and seventy point six square metres.
Surveyed by me, with due authority, in August, 2010 for Anthony Mark, Pearl Rivas & Others.
In accordance with Regulation 25 (1) of the Land Surveyors' Regulations 1998,
I certify that this plan is correct.

Checked by: *[Signature]* 112-29/03/11

[Signature]

Entered by

Trinidad & Tobago Land Surveyor. 26th October 2010