

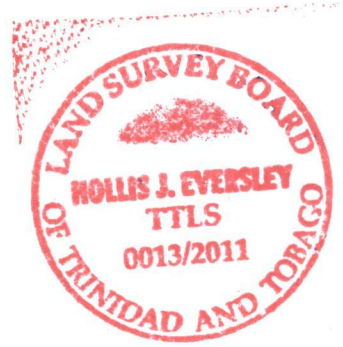
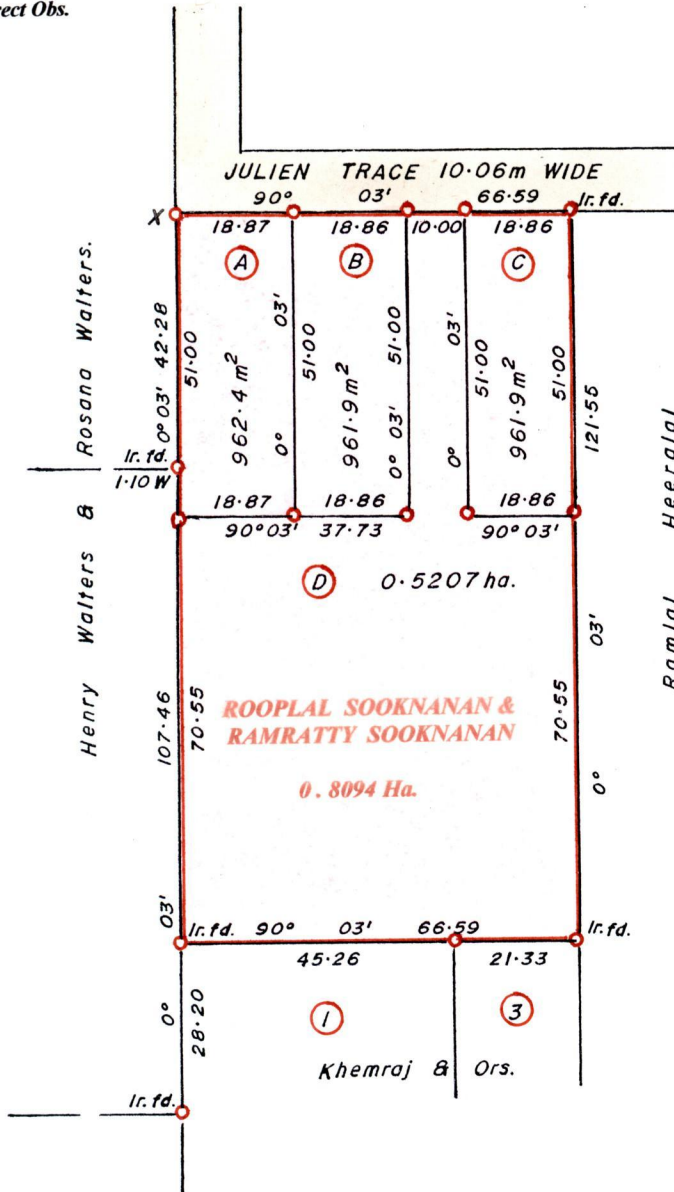
1439


198

R.P.O Vol. 592 Fol. 205
C.T. Vol. 2463 Fol. 187
C.T. Vol. 5448 Fol. 151

Ward of Siparia.
County of St. Patrick.
Cadastral Sheet G.14.M. 64D
3/c

675615mE, 1122825mN
X- U.T.M. 20, WGS 84 (+/- 5.0m)
GPS Handheld Direct Obs.




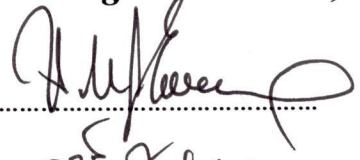
Approved 
Director of Surveys. 2011-7-1

Bk. 1103 :224.
SCALE 1:1250.

Distances are in METRES
o Denotes Iron Put except otherwise stated
Bearings are Cassini Grid based on Solar Observations.

**PLAN of 4 Parcels of land coloured in PINK in the Ward of Siparia.
Containing together zero point eight zero nine three hectare.
Surveyed by me, with due authority, in September 2009.
In accordance with Reg. 25(1) of the Land Surveyors' Regulations 1998,
I certify that this plan is correct.**

Checked by  11-06-09


23rd Feb 2009

Entered Trinidad and Tobago Land Surveyor 2009.

Original Bk. 1103 : 224

LOT #	C.T. Vol & Fol	Names.
A	5448 fol 159	Prakesh & Nicole M. Sooknaran. Kris Birju.
B	5448 fol 167	Indra B. & Neil D. Balgobin Ria Mohammed.
C	5448 fol 175	Meera & Ronald Ramkhabwan.
D	5448 fol 181	Roopal & Ramratty Sooknaran.

REPUBLIC OF MALDIVES
MINISTRY OF AGRICULTURE
LANDS AND MARINE RESOURCES



1439/198
4376/139