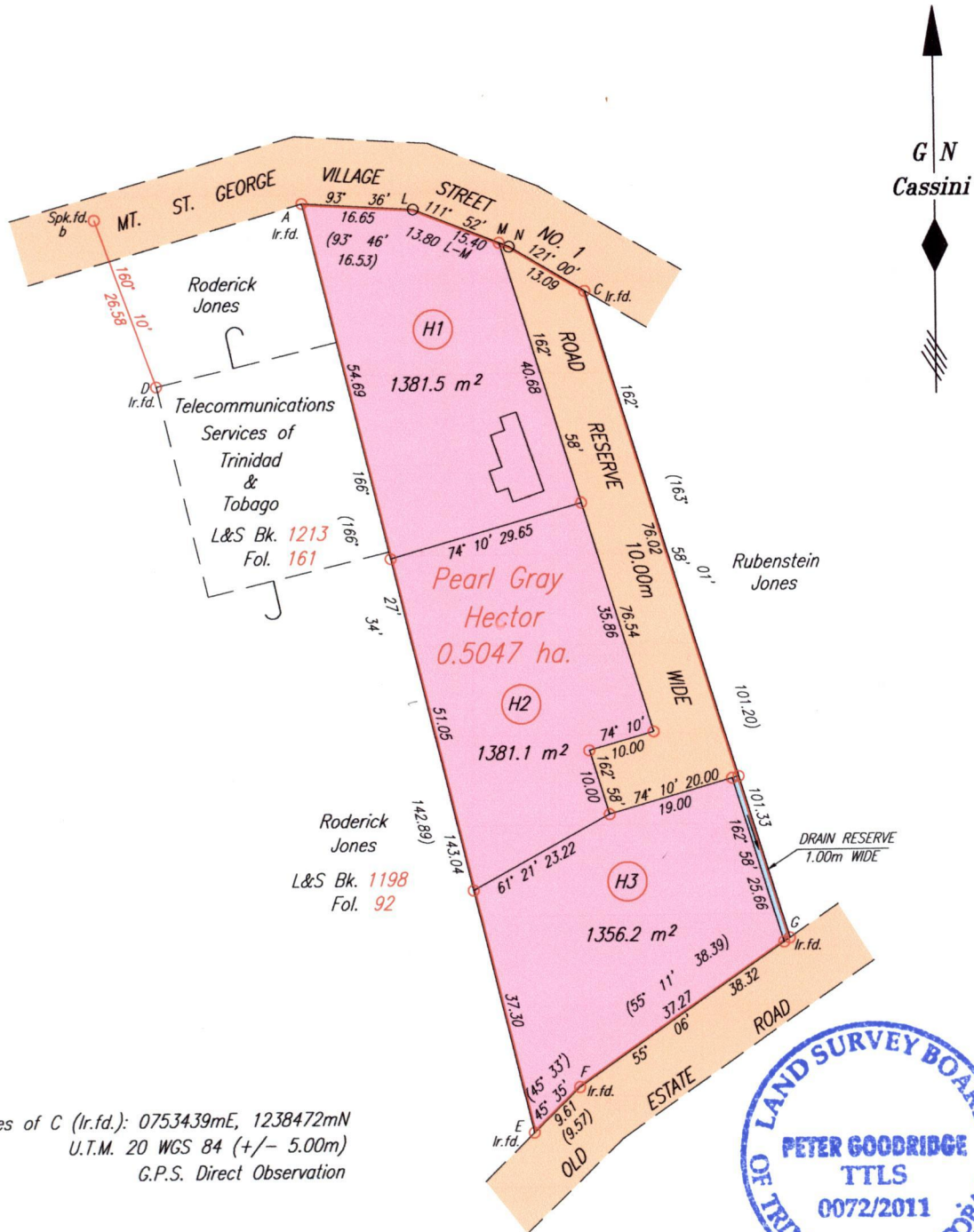


C.T. Vol. 3393
C.T. Vol 5339

Fol. 189
Fol. 299

MT. ST. GEORGE

PROPOSED SUBDIVISION



Coordinates of C (I.r.f.d.): 0753439mE, 1238472mN
U.T.M. 20 WGS 84 (+/- 5.00m)
G.P.S. Direct Observation

Approved *[Signature]*
Director of Surveys 2011.2.16

SCALE 1:1000
Distances are in METRES

- Denotes Peg put
 - Denotes Iron put except where otherwise stated
- Bearings are Cassini Grid based on Solar Observations

PLAN of 3 Parcels of land coloured pink in the Ward of Tobago

Containing together four thousand one hundred and and eighteen point eight square metres
Surveyed by me, with due authority, in October 2009 for Pearl Gray Hector

In accordance with Regulation 25 (1) of The Land Surveyors Regulations 1998,

I certify that this plan is correct.

Checked by *[Signature]* 14/12/11

Entered on

[Signature] TTLS

LOT #	C.T. Vol's, Fol	Names.
H1	5339 fol 315	Suzette Clinton
H2	5339 fol 323	Carol Stewart
H3	5339 fol 307	Urica Gray Baptiste



1439/197
+396/173