

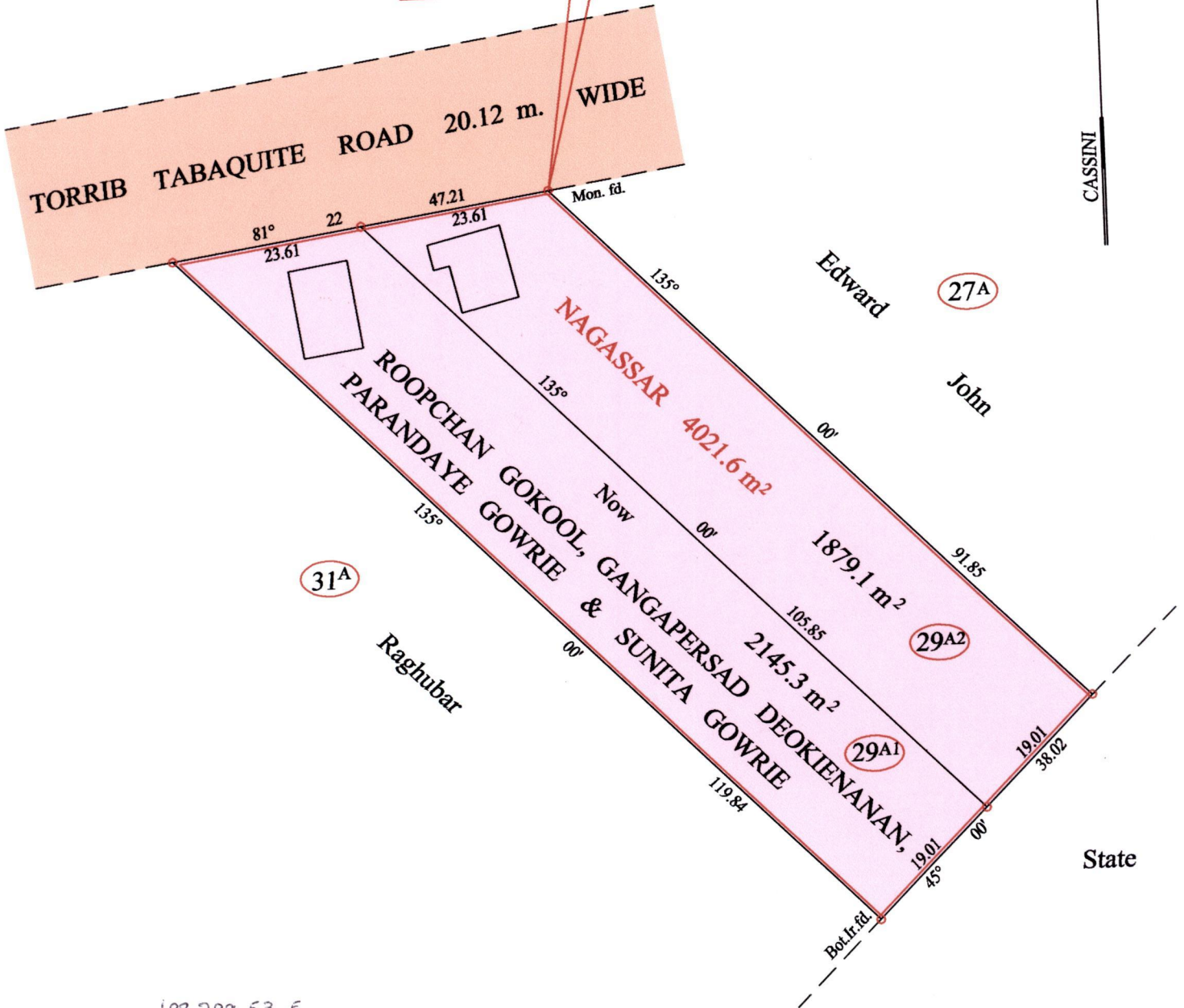
Process No 44653
 R.P.O. Vol. 709 Fol. 413
 C.T. Vol. Fol.
 C.T. Vol. 5421 Fol. 403

1439

Ward of Charuma
 County of Nariva
 Cadastral Sheet (D 25 E) 54 C
 2/c

195

E 0688423
 N 1142061
 Reading taken with
 Handheld G.P.S.
 Garmin 76S
 U.T.M. Zone 20
 Naparima
 ± 5 m.



688 799.53 E
 1143 404.78 N
 WGS 84

Vide Bk. Plan L.B.42

Approved *[Signature]*
 Director of Surveys
 2008-11-12

SCALE : 1:750

o Denotes Iron put except stated otherwise.
 Note: Bearings are cassini grid based on solar observations Distances are in metres

PLAN of 2 Parcels of land coloured pink in the Ward of Charuma
 Containing together four thousand and twenty four point four square metres
 Surveyed by me, with due authority, in July 2007
 In accordance with Regulation 25 (1) of the Land Surveyors' Regulations 1998,
 I certify that this plan is correct.

Checked by *[Signature]* 10/11/08

Entered on *[Signature]* 19.09.2008
 Trinidad & Tobago Land Surveyor



Lot #	C.T. Vol & Folio	Names.
29A1		
29A2	5421 fd 415	Parandaye Gowrie & Sunita Gowrie



1439/195.
4427/113