

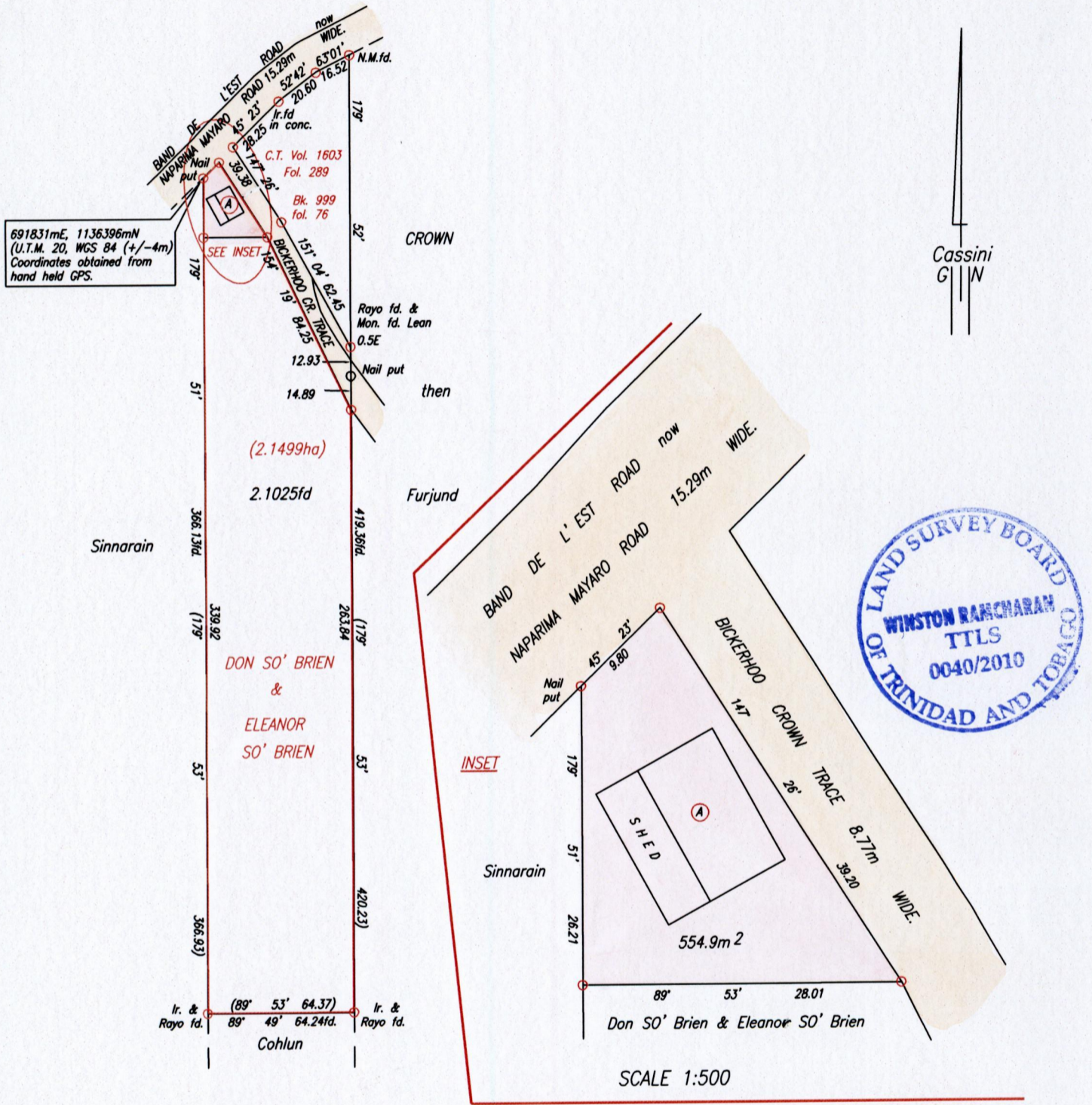
Vol. 5325 Fol. 383

R.P.O. Vol. 14 Fol. 493

C.T. Vol. 5021 Fol. 381

Bk.966 fol. 50

Cadastral Sheet H.1.J. 55D
Ward of Ortoire 1/c
County of Victoria
Tableland



Approved *[Signature]*
Director of Surveys 2010.11.12

○ Denotes Iron put except otherwise stated.
Bearings are Cassini Grid based on Solar Observations.

PLAN of a Parcel of land coloured pink in the Ward of Ortoire
Containing five hundred and fifty four point nine square metres
Surveyed by me, with due authority, in March, 2009
In accordance with Regulation 25(1) of the Land Surveyors' Regulations 1998,
I certify that this plan is correct.

Checked by *[Signature]* Winston Ramcharan

Entered Trinidad & Tobago Land Surveyor 6th October 2010