

1439

1888

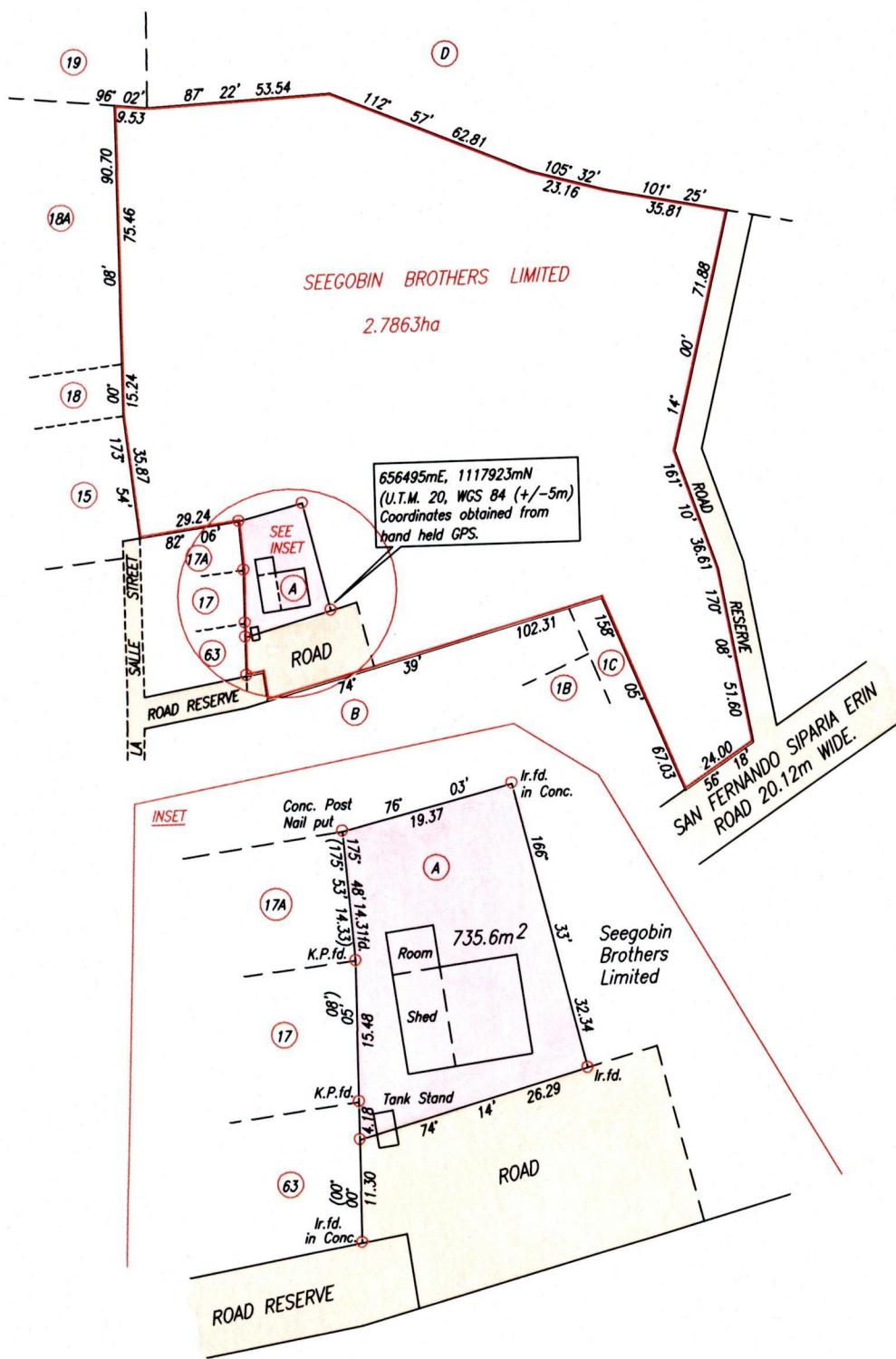
Vol. 5834 Fol. 97

R.P.O. Vol. 182 Fol. 639

C.T. Vol. 3199 Fol. 271

Plan R.H. 121

Cadastral Sheet G.16.K. $\frac{72C}{4/d}$
Ward of Erin
County of St. Patrick.
Los Bajos



Approved *[Signature]*
Director of Surveys 2010.11.12

SCALE 1:2000
Distances are in Metres

○ Denotes Iron put except otherwise stated.
Bearings are Cassini Grid based on Solar Observations.
PLAN of a Parcel of land coloured pink in the Ward of Erin
Containing seven hundred and thirty five point six square metres.
Surveyed by me, with due authority, in December, 1989 & October, 2010
In accordance with Regulation 25(1) of the Land Surveyors' Regulations 1998,
I certify that this plan is correct.

Checked by *[Signature]*

Entered Trinidad & Tobago Land Surveyor 18th October 2010

LOTA.- CT. VOL. 5334 FOL. 101 RAMNATH LALLA



NO. 1439/188
1336/18T