

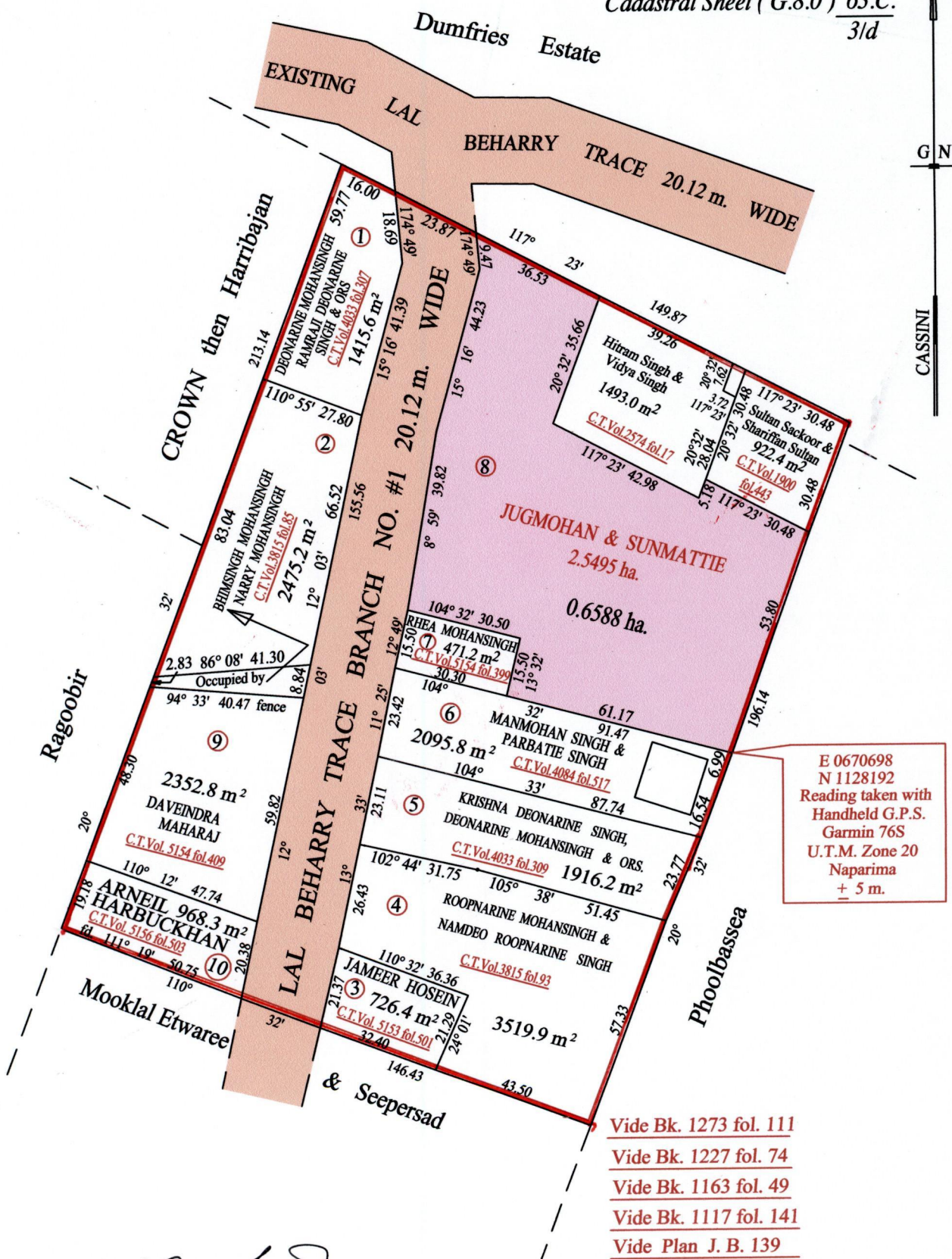
1439

1837

REMAINING PORTION

Vol. 5304 Fol. 113
R.P.O. Vol. 23 Fol. 609
C.T. Vol. 1423 Fol. 435

Ward of Naparima
County of Victoria
Cadastral Sheet (G.8.0) $\frac{63.C}{3/d}$



E 0670698
N 1128192
Reading taken with
Handheld G.P.S.
Garmin 76S
U.T.M. Zone 20
Naparima
+ 5 m.

Vide Bk. 1273 fol. 111
Vide Bk. 1227 fol. 74
Vide Bk. 1163 fol. 49
Vide Bk. 1117 fol. 141
Vide Plan J. B. 139

Approved *[Signature]*
Director of Surveys 2010.10.12

SCALE : 1:1500

Note: Bearings are cassini grid based on solar observations Distances are in metres
This is a true copy of a diagram of two point five four nine five hectares, originally transferred to Jugmohan & Sunmattie, shewing a portion coloured pink and containing zero point six five eight eight hectare being the remainder after eleven (11) previous transfers of another portion of the land. In accordance with Regulation 25 (1) of the Land Surveyors' Regulations 1998, I certify that this plan is correct.

Checked by *[Signature]* 10/10/10

Entered on Trinidad & Tobago Land Surveyor 11-02-2010

