

Vol. 5339 Fol. 521
R.P.O Vol. 127 Fol. 63
C.T. Vol. 1549 Fol. 121

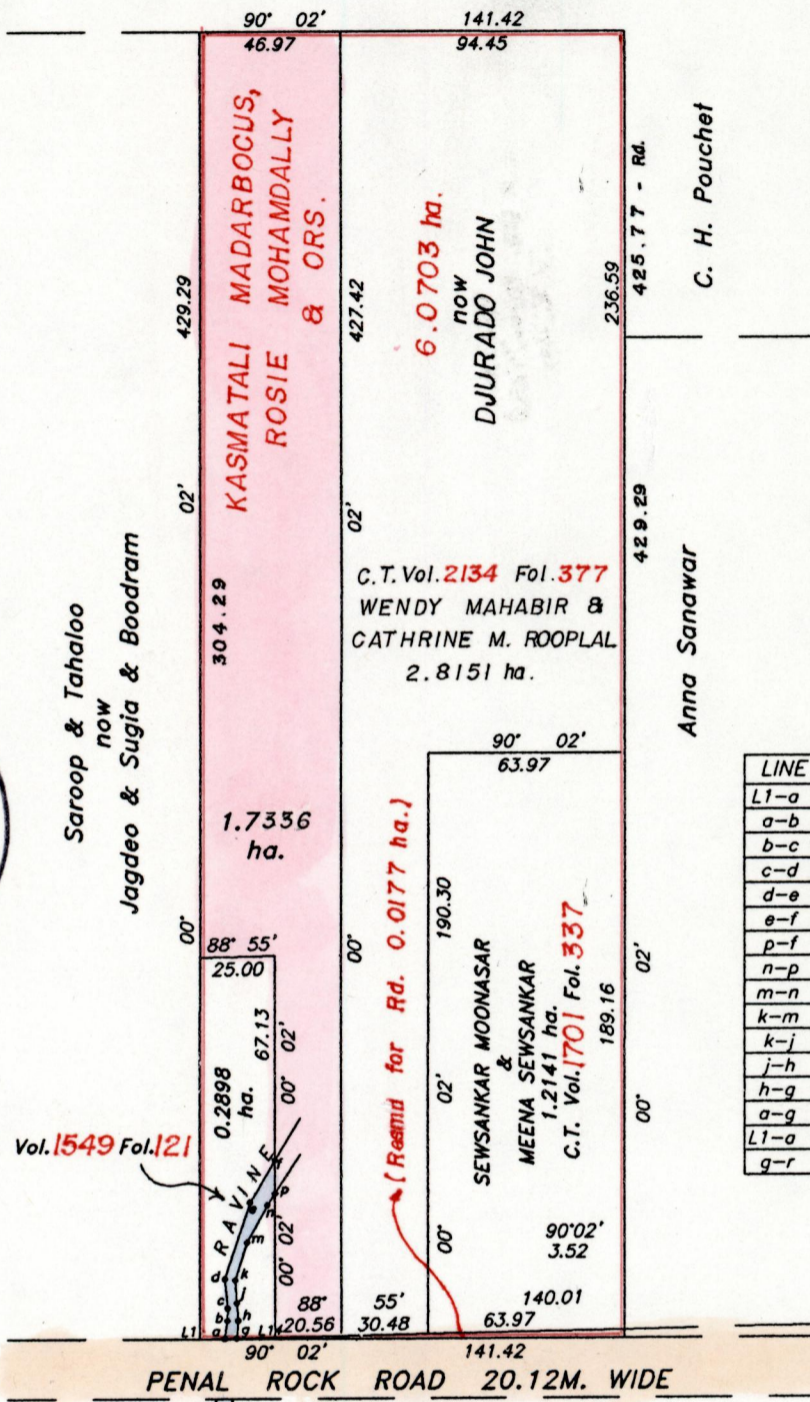
REMAINING PORTION PLAN

Ward of Siparia
County of St. Patrick
Cadastral Sheet G.18.C.

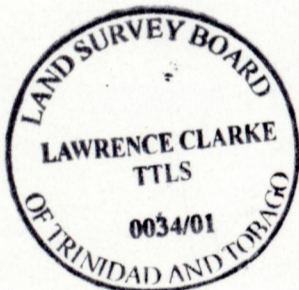
73.C.
1/b&d

U.P.R.N. No.

STATE then Seecharan



LINE	BEARING	LENGTH
L1-a	88°55'	8.29
a-b	08°15'	5.85
b-c	01°03'	4.13
c-d	354°23'	9.54
d-e	18°36'	26.17
e-f	31°03'	16.30
p-f	180°02'	10.92
n-p	33°16'	4.60
m-n	29°30'	14.02
k-m	17°39'	12.76
k-j	355°58'	7.50
j-h	355°04'	5.71
h-g	04°04'	5.81
a-g	88°55'	4.04
L1-a	88°55'	8.29
q-r	88°55'	12.67



C.T. Vol. 1549 Fol. 121

C.T. Vol. 1701 Fol. 337

C.T. Vol. 2134 Fol. 377
WENDY MAHABIR &
CATHRINE M. ROOLAL
2.8151 ha.

1.7356 ha.

6.0703 ha.
NOW
DJURADO JOHN

Approved
Director of Surveys
2004.3.25

Bk. 1175 Fol. 4
SCALE 1/2000

Note: To obtain compass bearings subtract 2 minutes
Distances are in metres
This is a true copy of a diagram of six point zero seven zero three hectares originally granted to KASMATALI MADARBOCAS, ROSIE MOHAMDALLY & ORS., shewing a portion coloured pink and containing one point seven three three six hectares being the remainder after one resumption & three previous transfers of other portions of land.
In accordance with Regulation 25 (1) of the Land Surveyors' Regulations 1998, I certify that this plan is correct.

Checked by
Entered
Trinidad & Tobago Land Surveyor.....2001