

R.P.O Vol. 70 Fol. 21  
 C.T. Vol. 3990 Fol. 107  
 C.T. Vol. 5340 Fol. 83.

**Coordinates**

Ir.pt. G1 : N 1124968  
 E 669890

Error Statement : ±4m

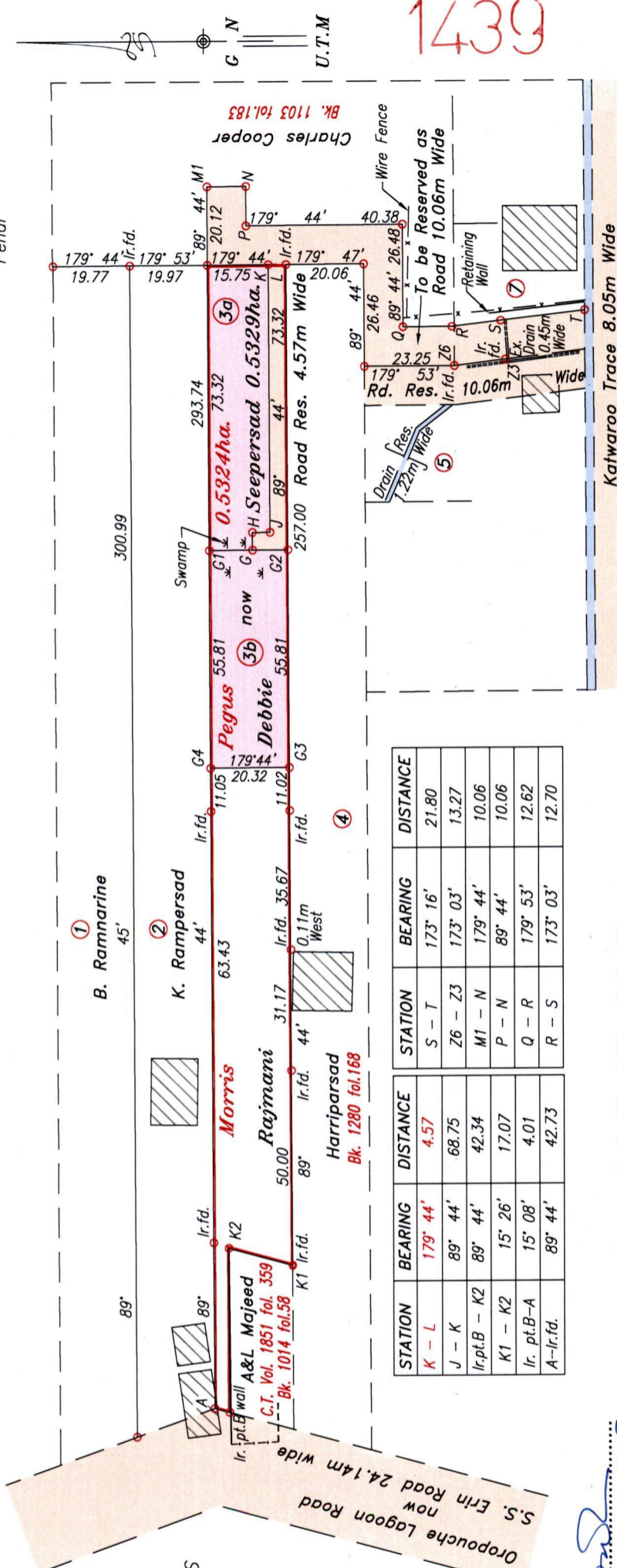
Datum Definition :

U.T.M. Zone 20 Naparima

Source : Magellan Hand Held GPS

STATION	BEARING	DISTANCE
G1-G	179° 44'	11.18
G-G2	179° 44'	9.14
G-H	89° 44'	4.57
H-J	179° 44'	4.57

Ward of Siparia  
 County of St. Patrick  
 Cadastral Sheet (G.13.F). 63F  
 1/c  
 Parcel Address: Lot#3 Katwaroo Street  
 Penal



STATION	BEARING	DISTANCE	STATION	BEARING	DISTANCE
K-L	179° 44'	4.57	S-T	173° 16'	21.80
J-K	89° 44'	68.75	Z6-Z3	173° 03'	13.27
Ir.pt.B-K2	89° 44'	42.34	M1-N	179° 44'	10.06
K1-K2	15° 26'	17.07	P-N	89° 44'	10.06
Ir.pt.B-A	15° 08'	4.01	Q-R	179° 53'	12.62
A-Ir.f.d.	89° 44'	42.73	R-S	173° 03'	12.70

Ref: Bk. 918 Fol. 63

SCALE 1:1500

Lot#	Area
3b	0.1134 ha.
3c	0.1133 ha.

Approved: *[Signature]*  
 Director of Surveys 2010.5.5

○ Denotes Iron put except otherwise stated.

Note: Bearings are U.T.M. grid based on solar observations.

Distances are in metres.

Plan of two Parcels of land coloured pink in the Ward of Siparia.

Containing together zero point two six seven hectare.

Surveyed by me, with due authority, in May 2006.

In accordance with Regulation 25(1) of the Land Surveyors' Regulations 1998,

I certify that this plan is correct.

Checked by: *[Signature]* 4/5/10

Entered .....

Trinidad & Tobago Land Surveyor *[Signature]* 29/1/2010



1439

177

